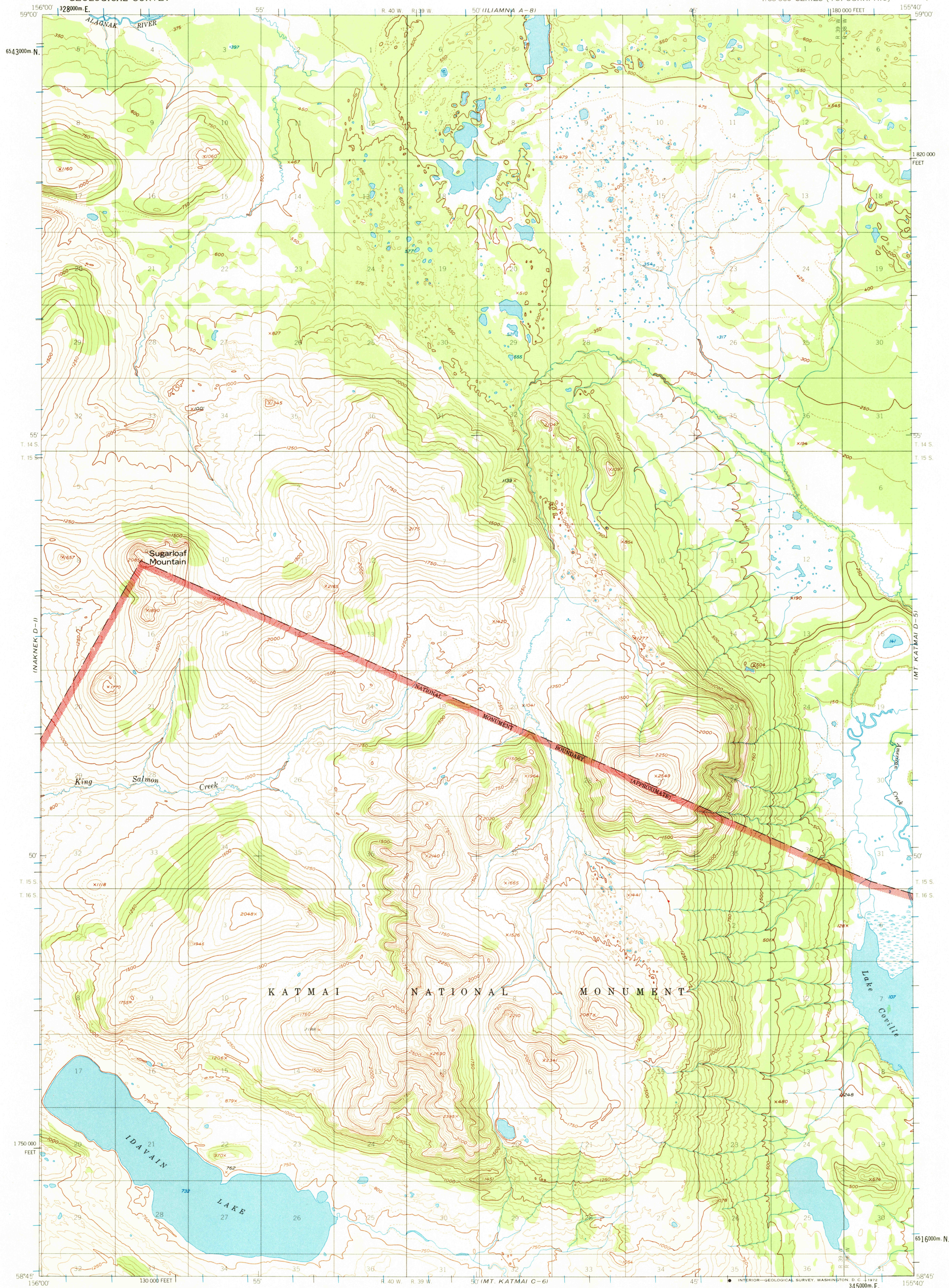


UNITED STATES
DEPARTMENT OF THE INTERIOR
GEOLOGICAL SURVEY

MT. KATMAI (D-6) QUADRANGLE
ALASKA
1:63 360 SERIES (TOPOGRAPHIC)



Mapped, edited, and published by the Geological Survey

Control by USCE

Topography by photogrammetric methods from aerial photographs
taken 1951. Map not field checked

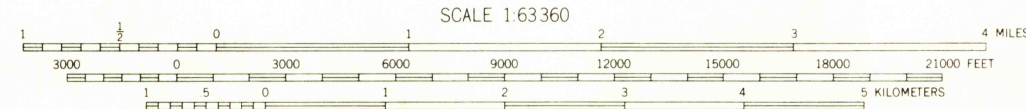
Universal Transverse Mercator projection, 1927 North American datum
10,000-foot grid based on Alaska coordinate system, zone 5
1000-meter Universal Transverse Mercator grid ticks,
zone 5, shown in blue

Land lines represent unsurveyed and unmarked locations
predetermined by the Bureau of Land Management
Folio S-18, Seward Meridian

Swamps, as portrayed, indicate only the wetter areas,
usually of low relief, as interpreted from aerial photographs



APPROXIMATE MEAN
DECLINATION, 1951



CONTOUR INTERVAL 50 FEET
DASHED LINES REPRESENT 25-FOOT CONTOURS
DATUM IS APPROXIMATE MEAN SEA LEVEL



QUADRANGLE LOCATION

ROAD CLASSIFICATION
No roads or trails in this area

FOR SALE BY U. S. GEOLOGICAL SURVEY
FAIRBANKS, ALASKA 99701, DENVER, COLORADO 80225, OR WASHINGTON, D. C. 20242
A FOLDER DESCRIBING TOPOGRAPHIC MAPS AND SYMBOLS IS AVAILABLE ON REQUEST

MT. KATMAI (D-6), ALASKA
N5845-W15540/15X20

1951
MINOR REVISIONS 1970

USGS
HISTORICAL FILE
TOPOGRAPHIC DIVISION

OCT 2 1972