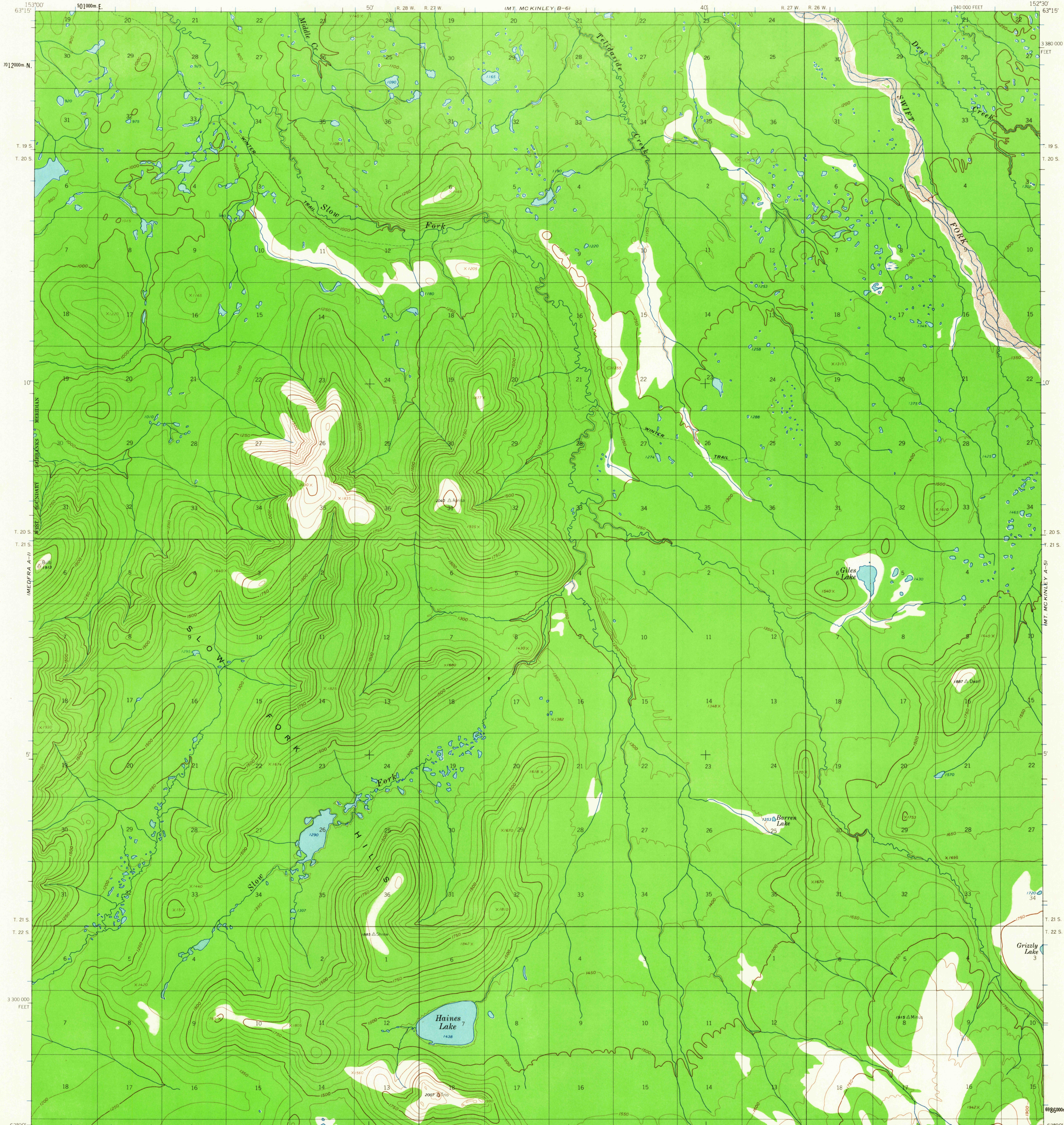
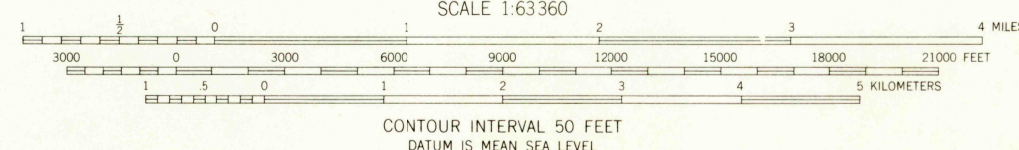
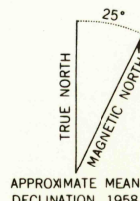


UNITED STATES  
DEPARTMENT OF THE INTERIOR  
GEOLOGICAL SURVEY

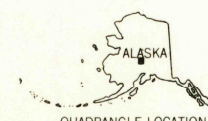
MT. MCKINLEY (A-6) QUADRANGLE  
ALASKA  
1:63 360 SERIES (TOPOGRAPHIC)



Maped, edited, and published by the Geological Survey  
Control by USGS and USC&GS  
Topography by photogrammetric methods from aerial photographs  
taken 1952, 1954 and 1956, field annotated 1958. Map not field checked  
Universal Transverse Mercator projection, 1927 North American datum  
10,000 foot grid based on Alaska coordinate system, zone 5  
1000-meter Universal Transverse Mercator grid ticks,  
zone 5, shown in blue  
Land lines represent unsurveyed and unmarked locations  
predetermined by the Bureau of Land Management  
Folio F-11, Fairbanks Meridian



USGS  
Historical File  
Topographic Division



U.S.G.S.  
FILE COPY  
TOPOGRAPHIC DIVISION

ROAD CLASSIFICATION  
Trails

JUL 27 1965

FOR SALE BY U.S. GEOLOGICAL SURVEY  
FAIRBANKS, ALASKA 99701, DENVER, COLORADO 80225, OR WASHINGTON, D. C. 20242  
A FOLDER DESCRIBING TOPOGRAPHIC MAPS AND SYMBOLS IS AVAILABLE ON REQUEST

MT. MCKINLEY (A-6), ALASKA  
N6300-W15230/15X30

1958