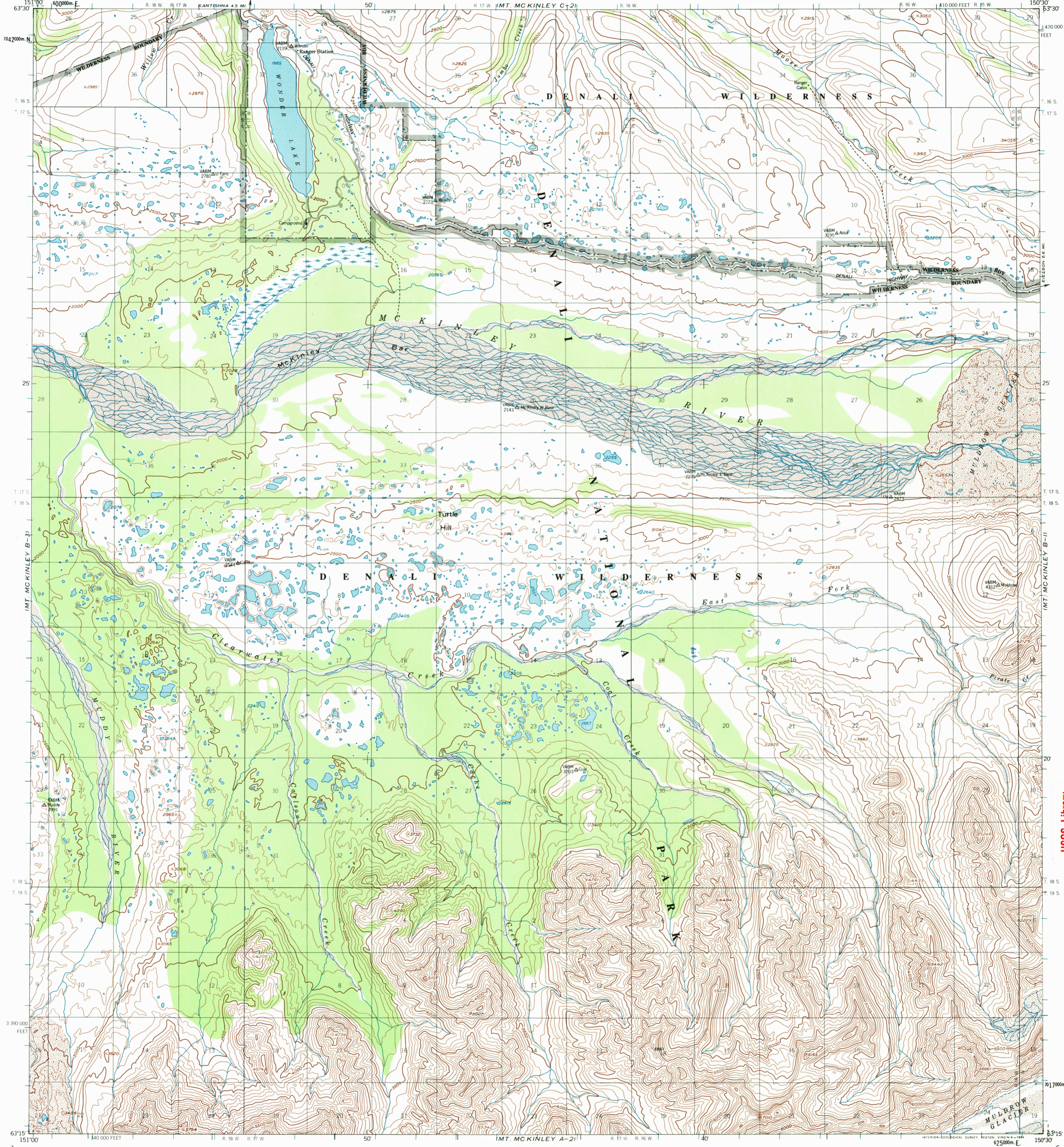




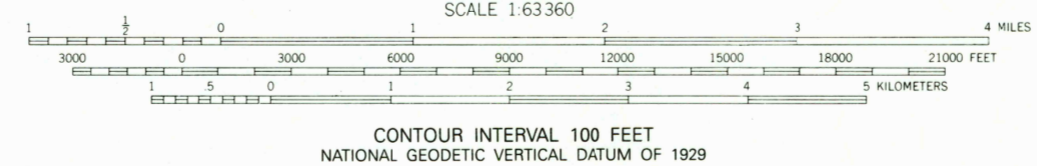
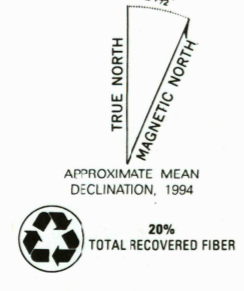
U.S. DEPARTMENT OF THE INTERIOR
U.S. GEOLOGICAL SURVEY

MT. MCKINLEY (B-2) QUADRANGLE
ALASKA

1:63 360 SERIES (TOPOGRAPHIC)



Produced by the United States Geological Survey
Control by USGS and NGS/NOAA
Compiled from aerial photographs taken 1952,
field annotated 1954. Map not field checked.
1927 North American Datum (NAD 27). Projection and
10000-foot ticks: Alaska Coordinate System, zone 4 (Transverse Mercator)
Blue 1000-meter Universal Transverse Mercator ticks, zone 5
North American Datum of 1983 (NAD 83) is shown by dashed
corner ticks. The values of the shift between NAD 27 and NAD 83
for 7.5-minute intersections are obtainable from National Geodetic
Survey NADCON software.
There may be private inholdings within the boundaries of
the National or State reservations shown on this map.
Federal reservation boundaries established by the Alaska National
Interest Lands Conservation Act, PL96-487, Dec. 2, 1980, are
shown as compiled by the administering agencies.
Land lines represent unsurveyed and unmarked locations
predetermined by the Bureau of Land Management
Folios F-10 and F-11, Farbanks Meridian.
Swamps, as portrayed, indicate only wetter areas,
usually of low relief, as interpreted from aerial photographs.



FOR SALE BY U.S. GEOLOGICAL SURVEY, P.O. BOX 25286, DENVER, COLORADO 80225
A FOLDER DESCRIBING TOPOGRAPHIC MAPS AND SYMBOLS IS AVAILABLE ON REQUEST



MT. MCKINLEY (B-2), AK
63150-C5-TF-063

1954
MINOR REVISION 1994



USGS Library
Reston, VA.
Topo Archive

JUN 3 0 2004

