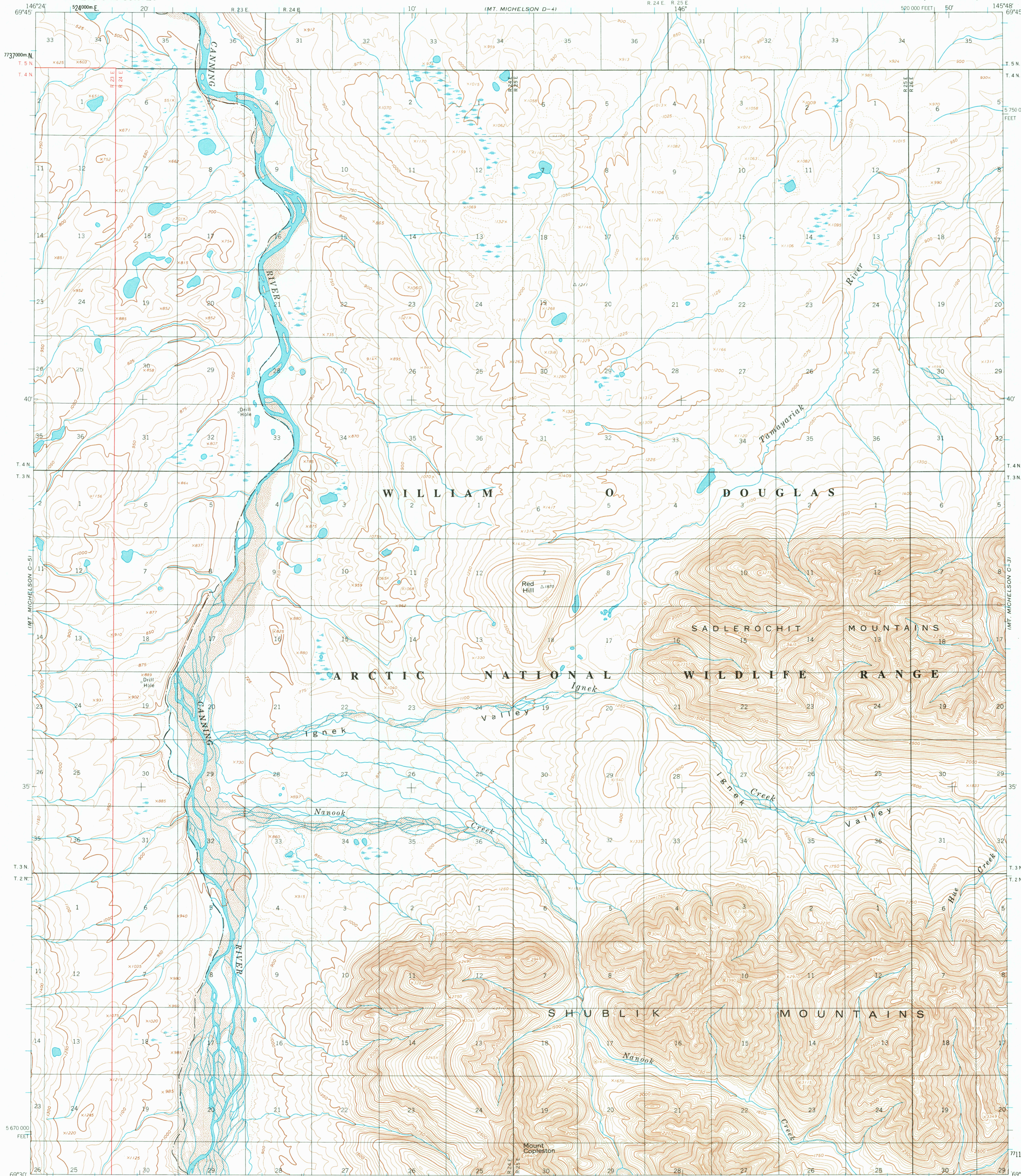
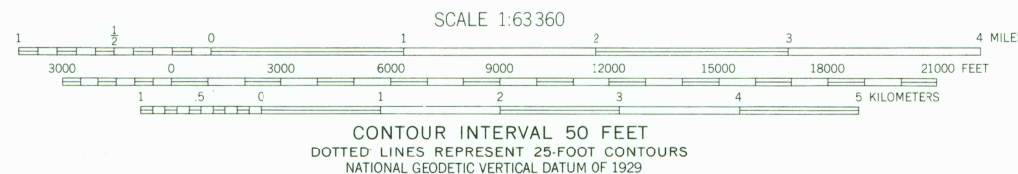
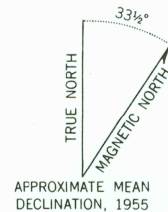


UNITED STATES
DEPARTMENT OF THE INTERIOR
GEOLOGICAL SURVEY

MT. MICHELSON (C-4) QUADRANGLE
ALASKA—NORTH SLOPE BOROUGH
1:63 360 SERIES (TOPOGRAPHIC)



Mapped by the Army Map Service
Edited and published by the Geological Survey
Control by USCGS and USCE
Topography by photogrammetric methods from aerial photographs
taken 1955, field annotated 1955. Map not field checked
Universal Transverse Mercator projection. 1927 North American datum
10,000-foot grid based on Alaska coordinate system, zone 3
1000-meter Universal Transverse Mercator grid ticks,
zone 6, shown in blue
Gray land lines represent unsurveyed and
unmarked locations predetermined by the Bureau of
Land Management. Folio U-2, Umat Meridian
There may be private inholdings within the boundaries of
the National or State reservations shown on this map
Swamps, as portrayed, indicate only the wetter areas,
usually of low relief, as interpreted from aerial photographs



FOR SALE BY U. S. GEOLOGICAL SURVEY
FAIRBANKS, ALASKA 99701. DENVER, COLORADO 80225. OR RESTON, VIRGINIA 22092
A FOLDER DESCRIBING TOPOGRAPHIC MAPS AND SYMBOLS IS AVAILABLE ON REQUEST



MT. MICHELSON (C-4), ALASKA
N6930-W14548/15X36
1955
MINOR REVISIONS 1978

USGS
Historical File
Topographic Division

ROAD CLASSIFICATION
No roads or trails in this area

DEC 22 1980

1300