

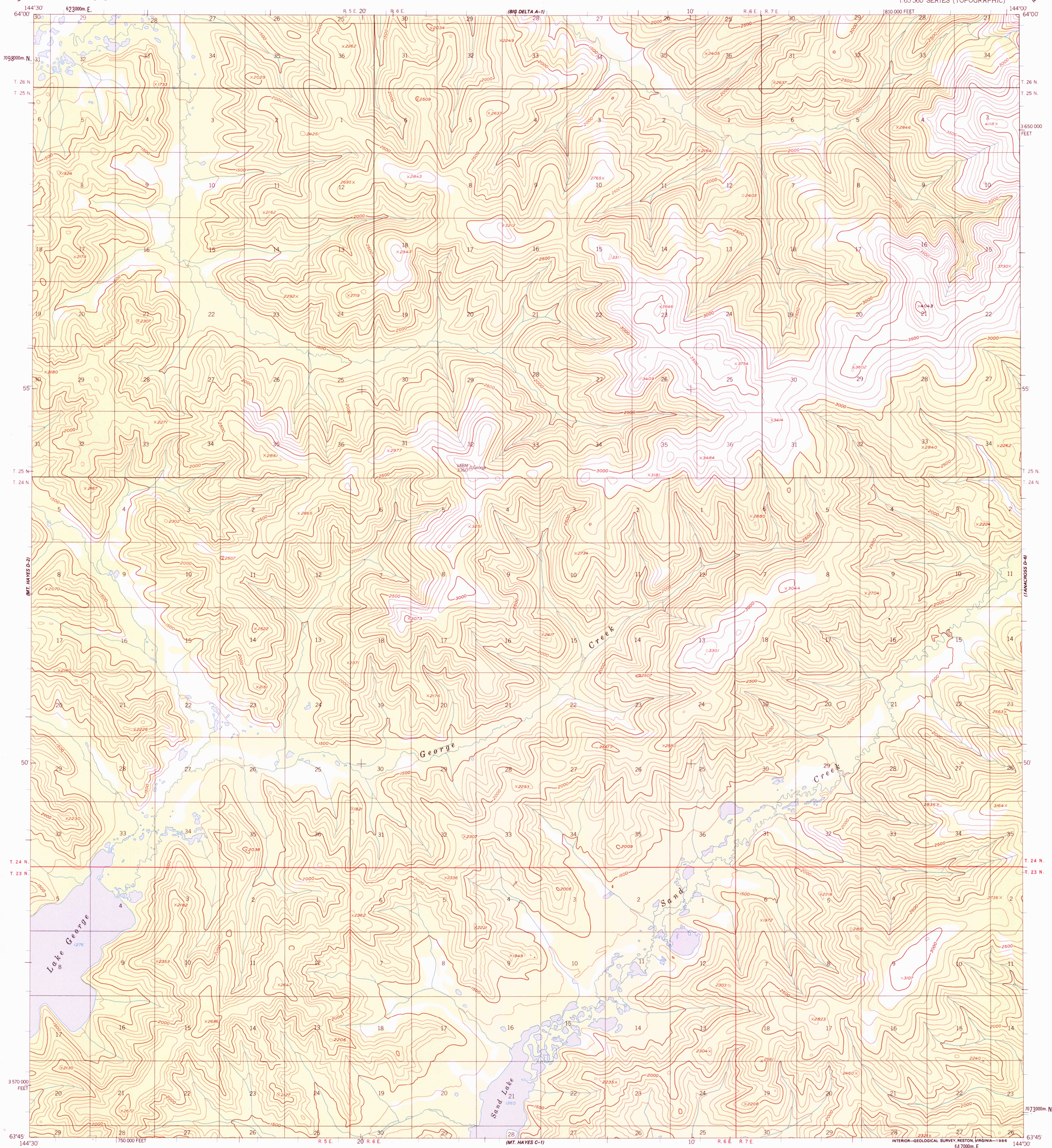
(BIG DELTA A-2)



U.S. DEPARTMENT OF THE INTERIOR
U.S. GEOLOGICAL SURVEY

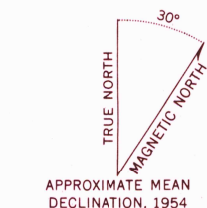
MT. HAYES (D-1) QUADRANGLE
ALASKA
1:63 360 SERIES (TOPOGRAPHIC)

(BIG DELTA A-6)

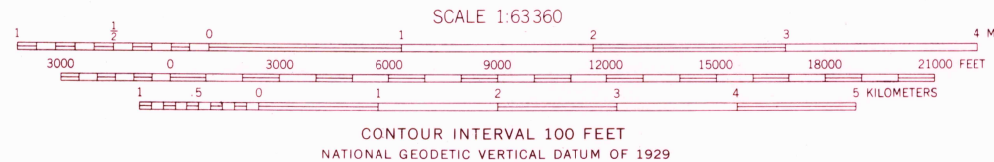


(MT. HAYES C-2)

Mapped, edited, and published by the Geological Survey
Control by USGS and NOS/NOAA
Topography by photogrammetric methods from aerial photographs
taken 1954. Map not field checked
Projection and 1000-meter grid ticks shown in blue:
Universal Transverse Mercator, zone 6
10,000-foot grid ticks based on Alaska coordinate
system, zone 3. 1927 North American Datum
To place on the predicted North American Datum 1983 move
the projection lines 45 meters north and 113 meters east
Gray land lines represent unsurveyed and unmarked locations
determined by the Bureau of Land Management
Folio CR-9, Copper River Meridian



APPROXIMATE MEAN
DECLINATION, 1954
20%
TOTAL RECOVERED FIBER



FOR SALE BY U.S. GEOLOGICAL SURVEY, P.O. BOX 25286, DENVER, COLORADO 80225
A FOLDER DESCRIBING TOPOGRAPHIC MAPS AND SYMBOLS IS AVAILABLE ON REQUEST



MT. HAYES (D-1), ALASKA
N6345-W14400/15X30
1954
MINOR REVISION 1985

RECEIVED
AUG 31 2001
U.S. GEOLOGICAL SURVEY
HISTORICAL MAP ARCHIVES

(TAMACROSS C-6)

