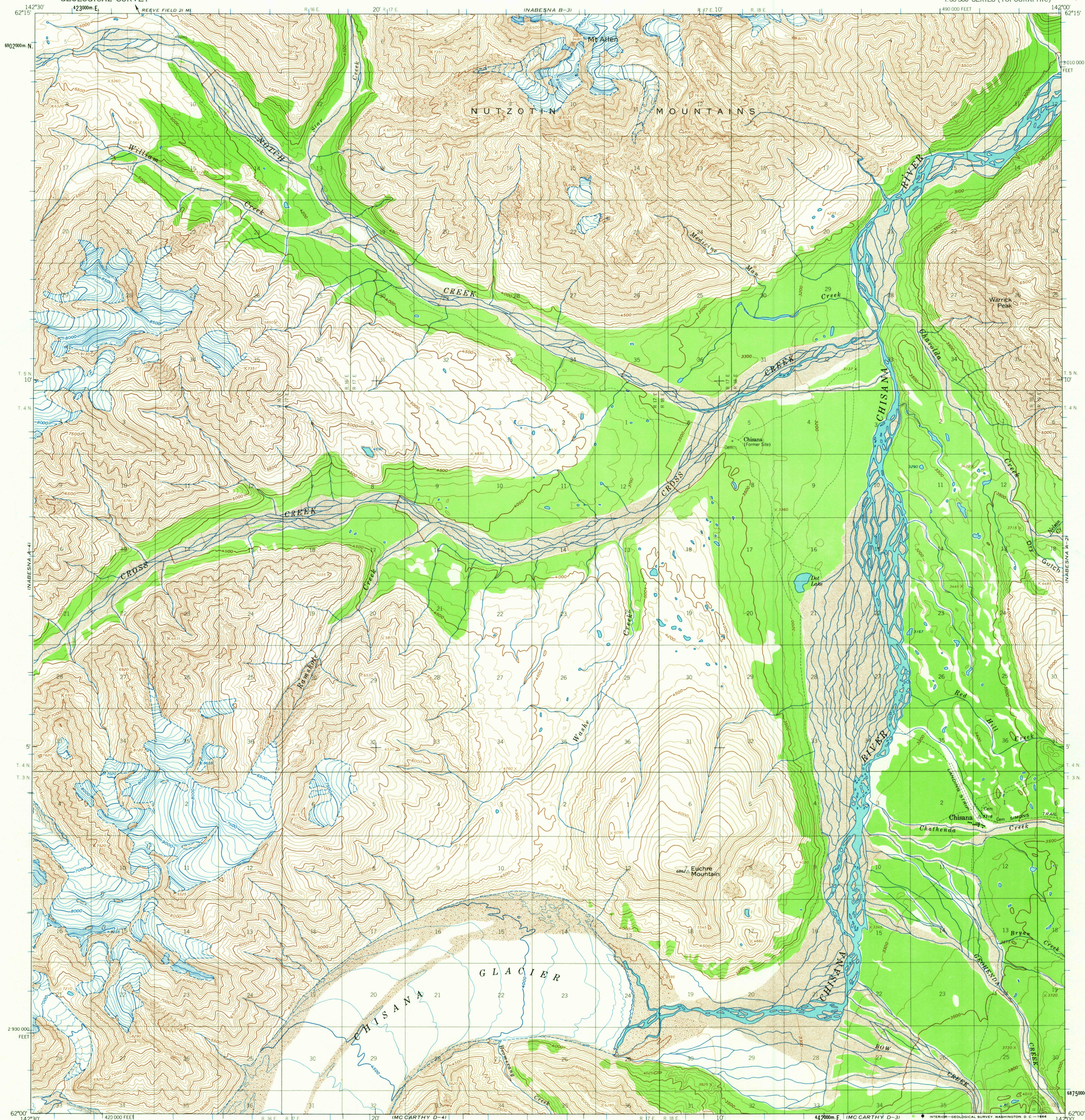
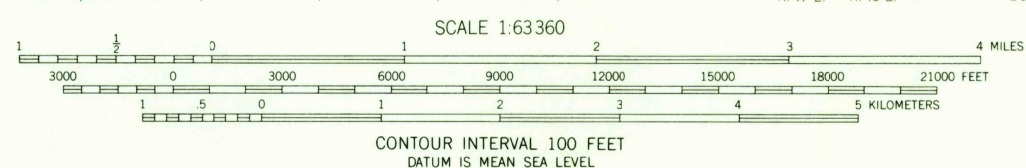
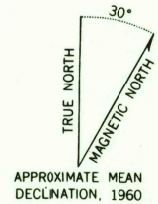


UNITED STATES  
DEPARTMENT OF THE INTERIOR  
GEOLOGICAL SURVEY

NABESNA (A-3) QUADRANGLE  
ALASKA  
1:63 360 SERIES (TOPOGRAPHIC)



Mapped, edited, and published by the Geological Survey  
Control by USGS  
Topography by photogrammetric methods from aerial photographs  
taken 1954, 1955, and 1957, field annotated 1960. Map not field checked  
Universal Transverse Mercator projection, 1927 North American datum  
10 000 foot grid based on Alaska coordinate system, zone 2  
1000 meter Universal Transverse Mercator grid ticks,  
zone 7, shown in blue  
Land lines represent unsurveyed and unmarked locations  
predetermined by the Bureau of Land Management  
Folios CR-2, and CR-3, Copper River Meridian



FOR SALE BY U.S. GEOLOGICAL SURVEY  
FAIRBANKS, ALASKA 99701, DENVER, COLORADO 80225, OR WASHINGTON, D.C. 20242  
A FOLDER DESCRIBING TOPOGRAPHIC MAPS AND SYMBOLS IS AVAILABLE ON REQUEST



USGS  
Historical File  
Topographic Division

FILE COPY  
TOPOGRAPHIC DIVISION

ROAD CLASSIFICATION  
Trails

NABESNA (A-3), ALASKA  
N6200-W14200/15X30

1960

MAY 19 1966

2205