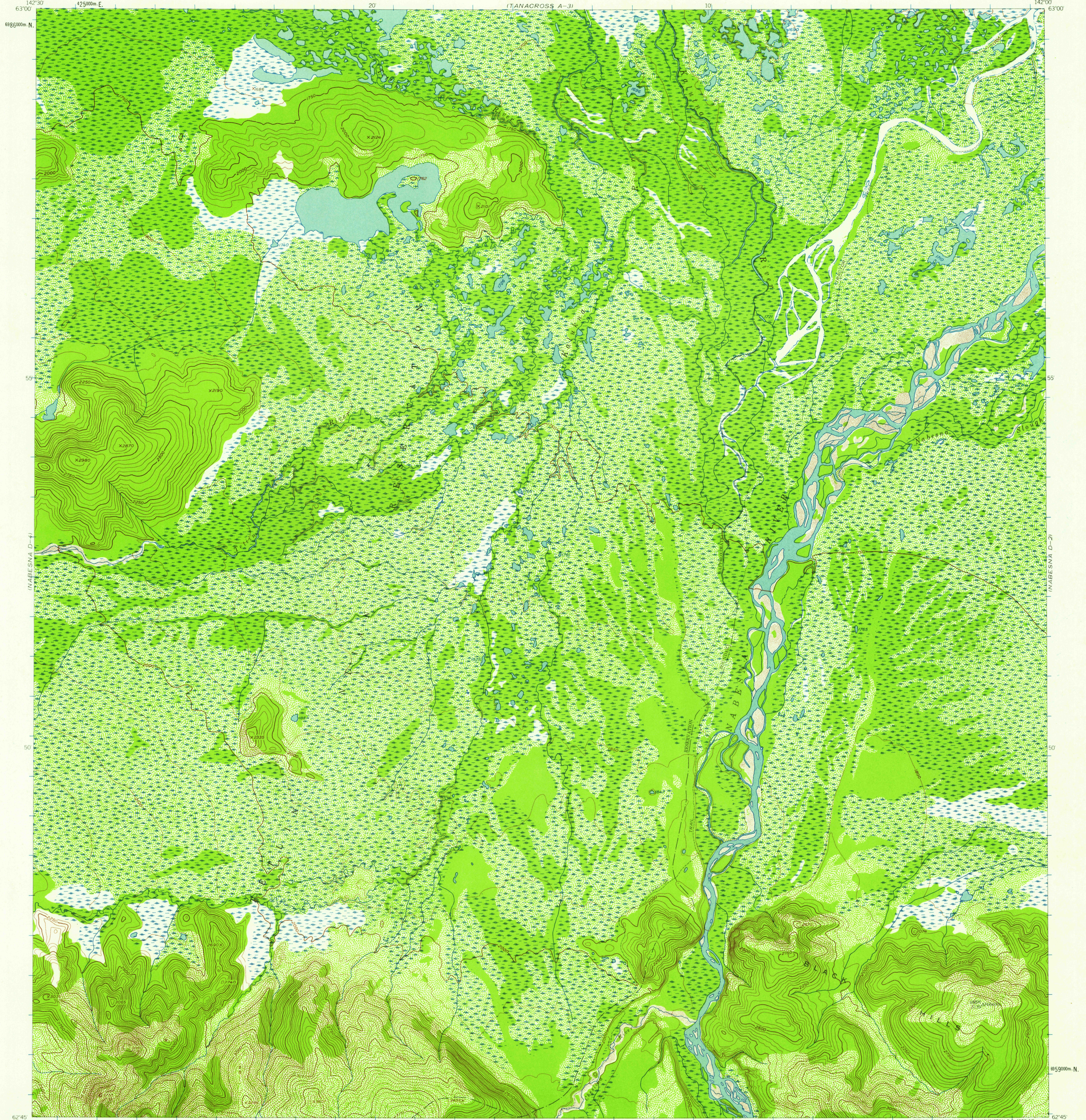
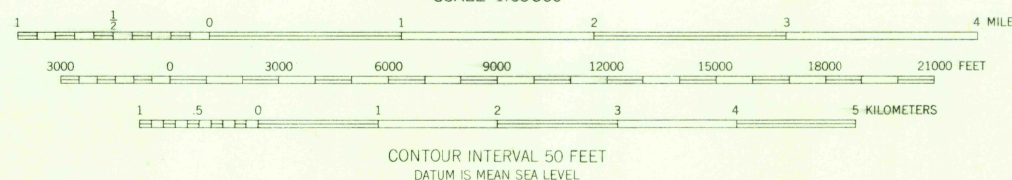
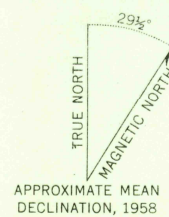


UNITED STATES
DEPARTMENT OF THE INTERIOR
GEOLOGICAL SURVEY

NABESNA (D-3) QUADRANGLE
ALASKA-FOURTH JUDICIAL DIVISION
1:63 360 SERIES (TOPOGRAPHIC)



Mapped, edited, and published by the Geological Survey
Control by USGS and USC&GS
Topography from aerial photographs by photogrammetric
methods 1956. Aerial photographs taken 1954,
field annotated 1955. Map not field checked
Universal Transverse Mercator projection
1927 North American datum
1000-meter Universal Transverse Mercator grid ticks,
zone 7, shown in blue
Unchecked elevations are shown in brown and blue



USGS
Historical File
Topog.

U.S.G.S.
FILE COPY
TOPOGRAPHIC DIVISION

ROAD CLASSIFICATION
Trails

NABESNA (D-3), ALASKA
N6245-W14200/15X30
1955

FOR SALE BY U.S. GEOLOGICAL SURVEY
FAIRBANKS, ALASKA DENVER 2, COLORADO WASHINGTON 25, D.C.
A FOLDER DESCRIBING TOPOGRAPHIC MAPS AND SYMBOLS IS AVAILABLE ON REQUEST

NOV 10 1958
1865