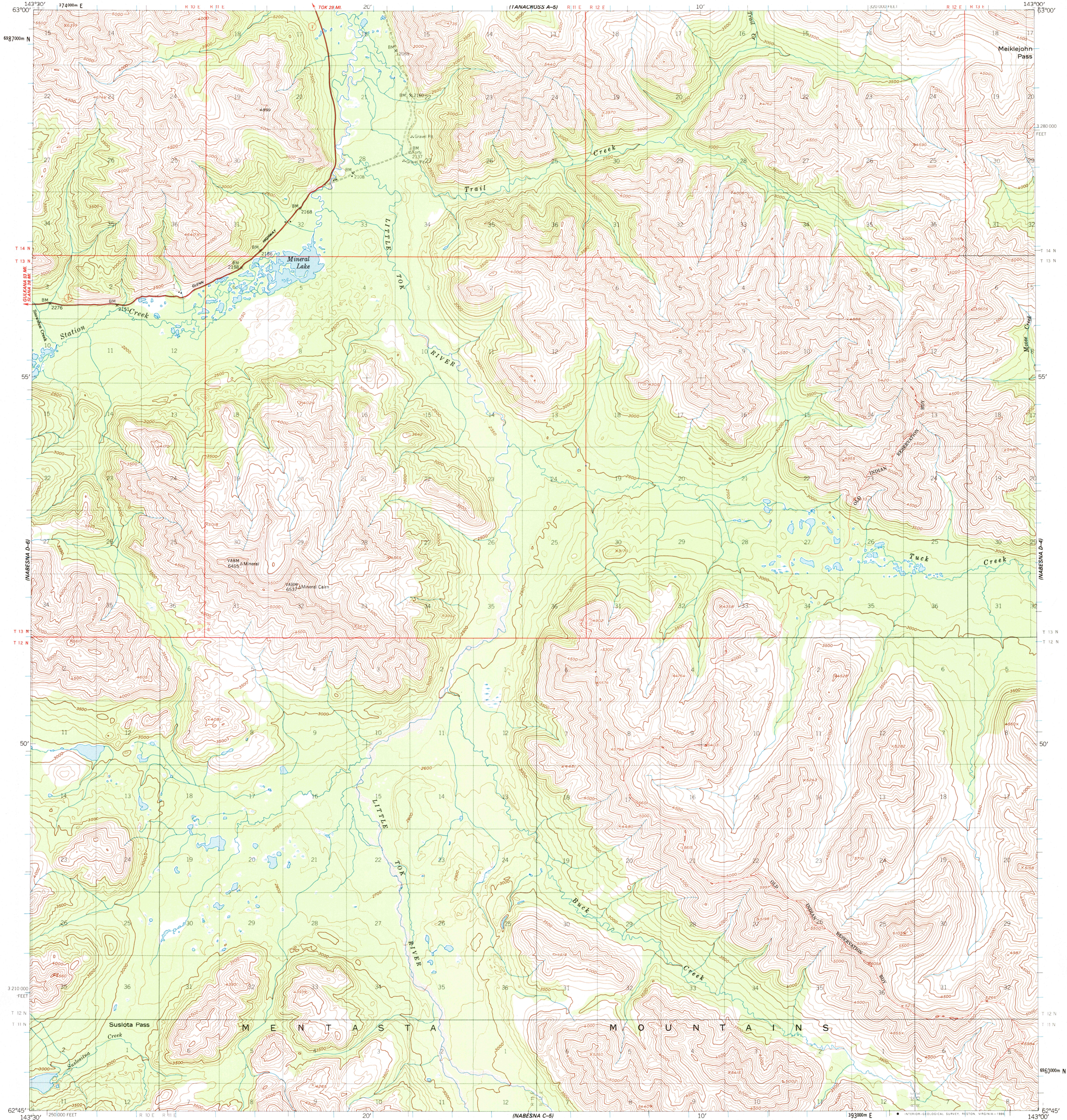


(TANACROSS A-4)

(TANACROSS A-4)

UNITED STATES
DEPARTMENT OF THE INTERIOR
GEOLOGICAL SURVEY

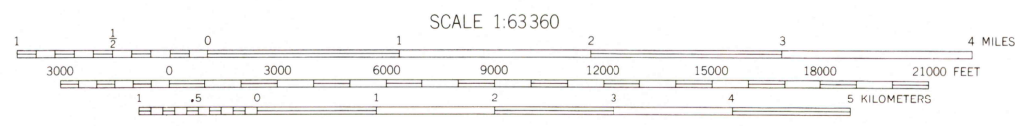
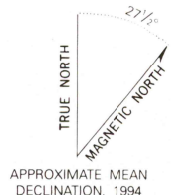
NABESNA (D-5) QUADRANGLE
ALASKA
1:63 360 SERIES (TOPOGRAPHIC)



(NABESNA C-6)

(NABESNA C-4)

Produced by the United States Geological Survey
Control by USGS and NOS/NOAA
Compiled from aerial photographs taken 1948,
fields annotated 1950. Map not field checked.
North American Datum of 1927 (NAD 27). Projection and
10000-foot ticks: Alaska Coordinate System, zone 7 (Transverse Mercator)
Blue 1000-meter Universal Transverse Mercator ticks, zone 2
North American Datum of 1983 (NAD 83) is shown by dashed
corner ticks. The values of the shift between NAD 27 and NAD 83
for 7.5-minute intersections are obtainable from National Geodetic
Survey NADCON software
Gray land lines represent unsurveyed and unmarked locations
predetermined by the Bureau of Land Management
Folio CR-3, Copper River Meridian
Swamps, as portrayed, indicate only wetter areas,
usually of low relief, as interpreted from aerial photographs



CONTOUR INTERVAL 100 FEET
SUPPLEMENTARY CONTOUR INTERVAL 50 FEET
NATIONAL GEODETIC VERTICAL DATUM OF 1929

FOR SALE BY U. S. GEOLOGICAL SURVEY
FAIRBANKS, ALASKA 99701, DENVER, COLORADO 80225, OR RESTON, VIRGINIA 22092
A FOLDER DESCRIBING TOPOGRAPHIC MAPS AND SYMBOLS IS AVAILABLE ON REQUEST



ROAD CLASSIFICATION
Heavy-duty ——— Unimproved dirt - - - - -
State Route ○

NABESNA (D-5), AK
62143-G1-TF-063

1950
MINOR REVISION 1994

