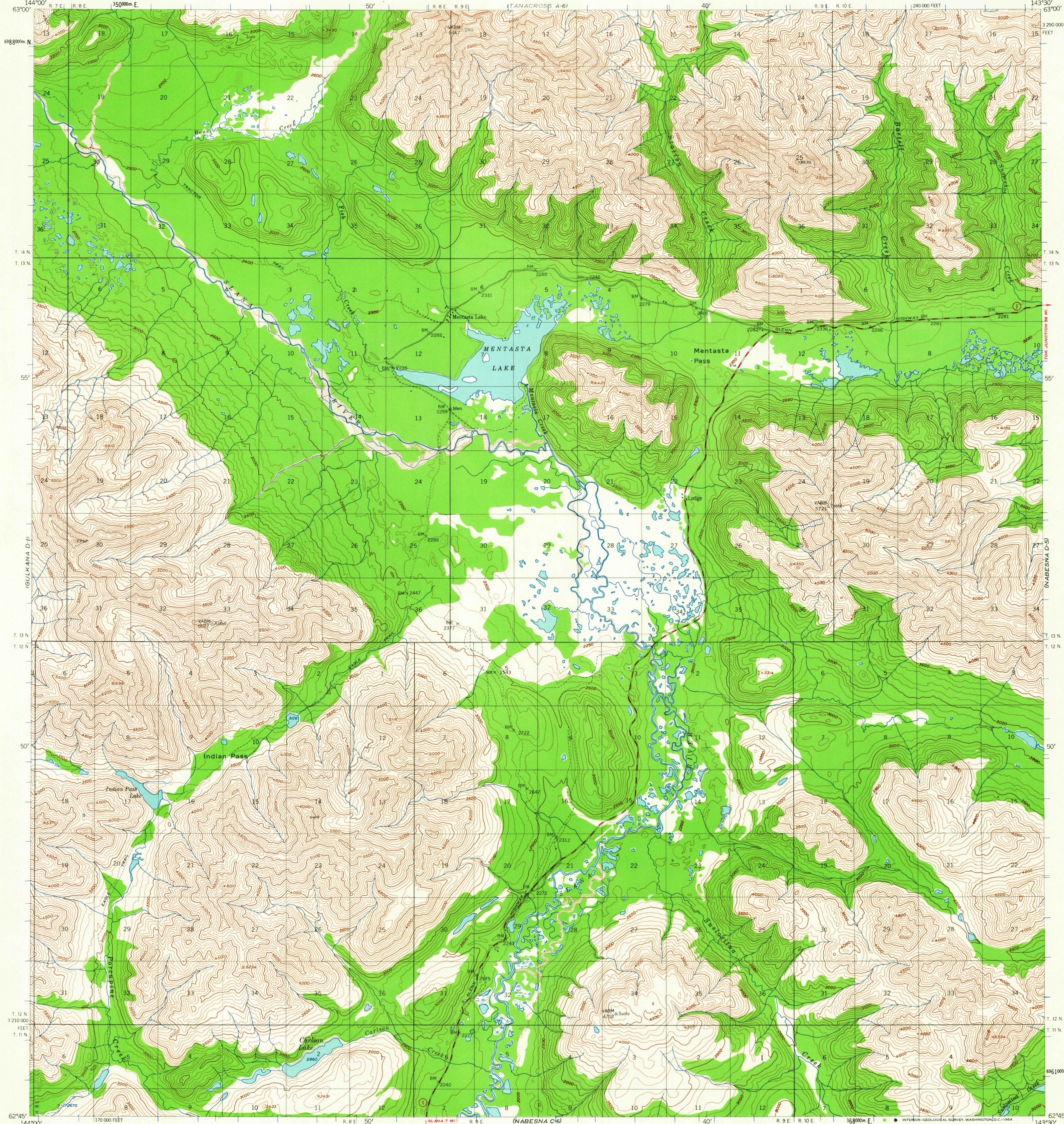
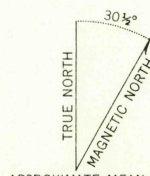


UNITED STATES
DEPARTMENT OF THE INTERIOR
GEOLOGICAL SURVEY

NABESNA (D-6) QUADRANGLE
ALASKA
1:63 360 SERIES (TOPOGRAPHIC)



Maped, edited, and published by the Geological Survey
Control by USGS and USC&GS
Topography by photogrammetric methods from aerial photographs
taken 1948, field annotated 1949. Map not field checked
Universal Transverse Mercator projection, 1927 North American datum
10,000-foot grid based on Alaska coordinate system, zone 2
1000-meter Universal Transverse Mercator grid ticks,
zone 7, shown in blue
Land lines represent unsurveyed and unmarked locations
predetermined by the Bureau of Land Management
Folio CR-3, Copper River Meridian
Swamps, as portrayed, indicate only the wetter areas,
usually of low relief, as interpreted from aerial photographs



APPROXIMATE MEAN
DECLINATION, 1949



CONTOUR INTERVAL 100 FEET
DOTTED LINES REPRESENT 50-FOOT CONTOURS
AREAS NOT SURVEYED IN DETAIL INDICATED BY BROKEN LINES
DATUM IS MEAN SEA LEVEL

FOR SALE BY U. S. GEOLOGICAL SURVEY
FAIRBANKS, ALASKA DENVER 25, COLORADO WASHINGTON 25, D. C.
A FOLDER DESCRIBING TOPOGRAPHIC MAPS AND SYMBOLS IS AVAILABLE ON REQUEST

USGS
Historical File
Topographic Division



QUADRANGLE LOCATION

U.S.G.S.
FILE COPY
TOPOGRAPHIC DIVISION

ROAD CLASSIFICATION
Medium-duty ——— Light-duty ———
Unimproved dirt ———
State Route

NABESNA (D-6), ALASKA
N6245-W14330/15X30
1949
MINOR REVISIONS 1963

JUN 16 1964