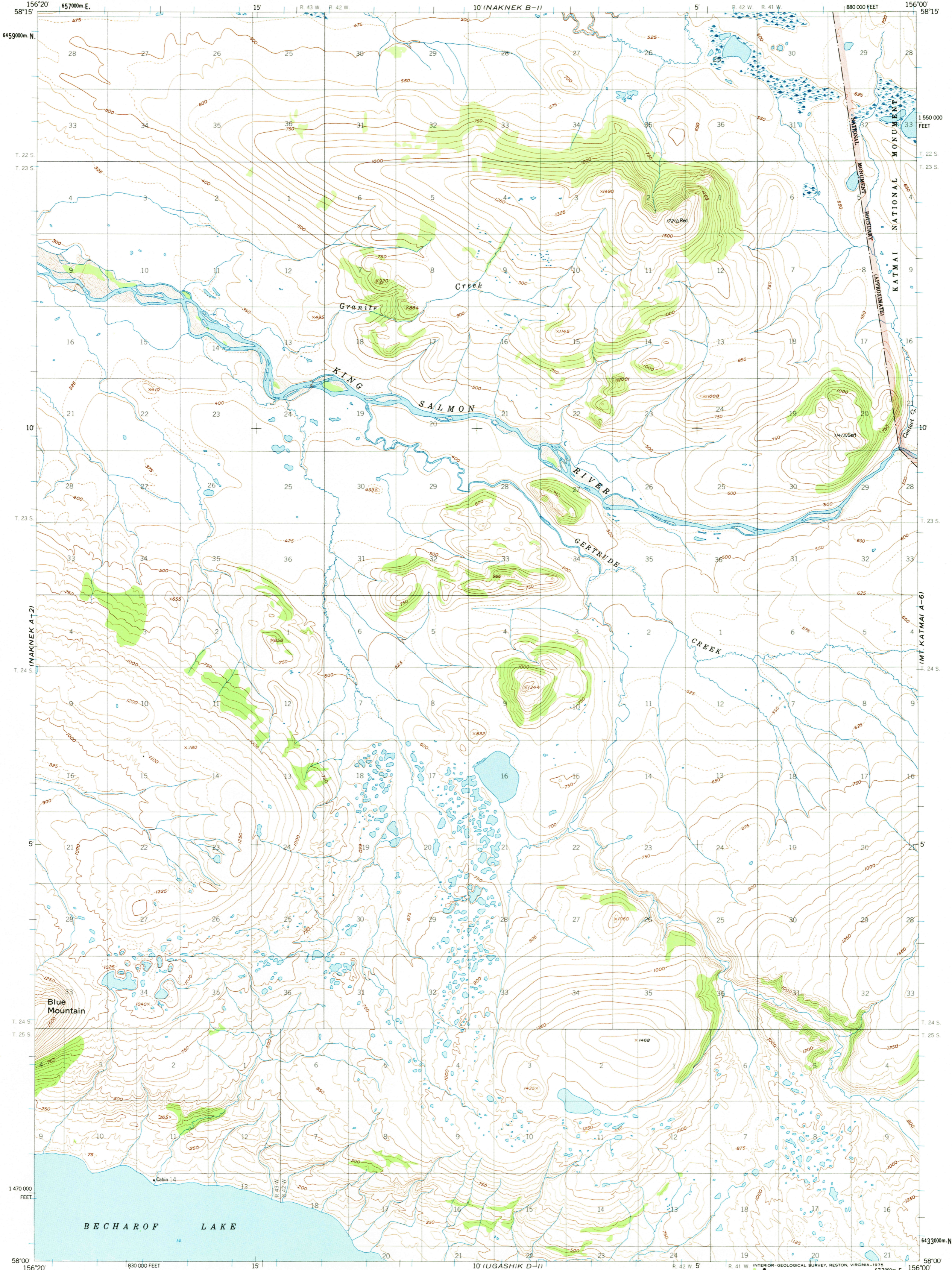


156°20' 58'15" W  
645900m N

UNITED STATES  
DEPARTMENT OF THE INTERIOR  
GEOLOGICAL SURVEY

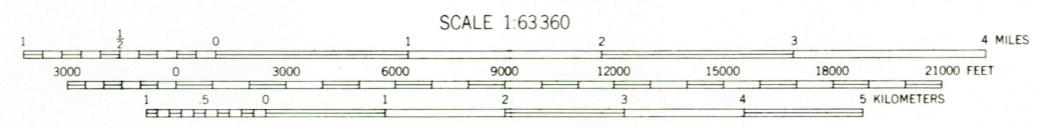
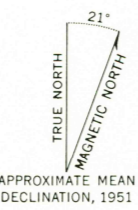
NAKNEK (A-1) QUADRANGLE  
ALASKA  
1:63 360 SERIES (TOPOGRAPHIC)

156°00' 58'15" W  
643300m N



156°20' 58'15" W  
643300m N

Mapped, edited, and published by the Geological Survey  
Control by USC&GS and USCE  
Topography by photogrammetric methods from aerial photographs  
taken 1951. Map not field checked  
Universal Transverse Mercator projection, 1927 North American datum  
10,000-foot grid based on Alaska coordinate system, zone 6  
1000-meter Universal Transverse Mercator grid ticks,  
zone 4, shown in blue  
Land lines represent unsurveyed and unmarked locations  
predetermined by the Bureau of Land Management  
Folio S-22, Seward Meridian  
Swamps, as portrayed, indicate only the wetter areas,  
usually of low relief, as interpreted from aerial photographs



SCALE 1:63 360  
CONTOUR INTERVAL 50 FEET  
DASHED LINES REPRESENT 25-FOOT CONTOURS  
NATIONAL GEODETIC VERTICAL DATUM OF 1929  
FOR SALE BY U. S. GEOLOGICAL SURVEY  
FAIRBANKS, ALASKA 99701, DENVER, COLORADO 80225, OR RESTON, VIRGINIA 22092  
A FOLDER DESCRIBING TOPOGRAPHIC MAPS AND SYMBOLS IS AVAILABLE ON REQUEST



ROAD CLASSIFICATION  
No roads or trails in this area

NAKNEK (A-1), ALASKA  
N5800-W15600/15X20  
1951  
MINOR REVISIONS 1973

USGS  
Historical File  
Topographic Division

APR 21 1975

1100