

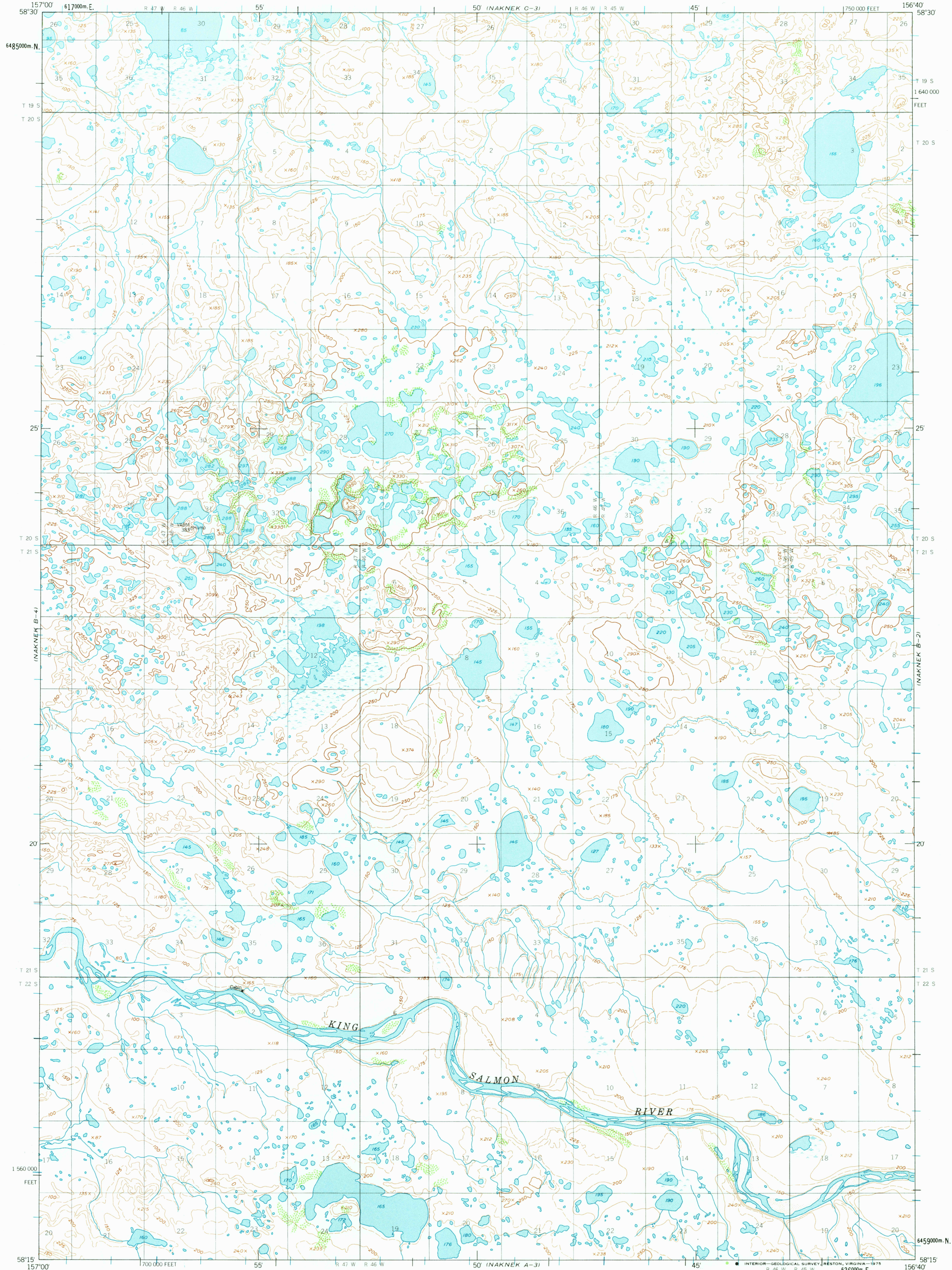
INAKNEK C-1

UNITED STATES  
DEPARTMENT OF THE INTERIOR  
GEOLOGICAL SURVEY

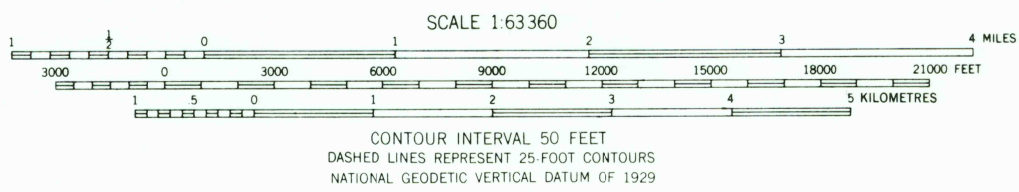
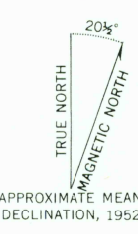
UNITED STATES  
DEPARTMENT OF THE ARMY  
CORPS OF ENGINEERS

NAKNEK (B-3) QUADRANGLE  
ALASKA  
1:63 360 SERIES (TOPOGRAPHIC)

INAKNEK C-2



Mapped by the Army Map Service  
Published for civil use by the Geological Survey  
Control by NOS/NOAA and USCE  
Topography by photogrammetric methods from aerial photographs  
taken 1951. Field check 1952  
Universal Transverse Mercator projection, 1927 North American datum  
10,000-foot grid based on Alaska coordinate system, zone 6  
1000-metre Universal Transverse Mercator grid ticks,  
zone 4, shown in blue  
Land lines represent unsurveyed and unmarked locations  
pre-determined by the Bureau of Land Management  
Folio S-22, Seward Meridian



ROAD CLASSIFICATION  
No roads or trails in this area

FOR SALE BY U.S. GEOLOGICAL SURVEY  
FAIRBANKS, ALASKA 99701, DENVER, COLORADO 80225 OR RESTON, VIRGINIA 22092  
A FOLDER DESCRIBING TOPOGRAPHIC MAPS AND SYMBOLS IS AVAILABLE ON REQUEST

NAKNEK (B-3), ALASKA  
N5815-W15640/15X20  
1952  
MINOR REVISIONS 1973

USGS  
HISTORICAL FILE  
TOPOGRAPHIC DIVISION

SEP 8 1975

1100