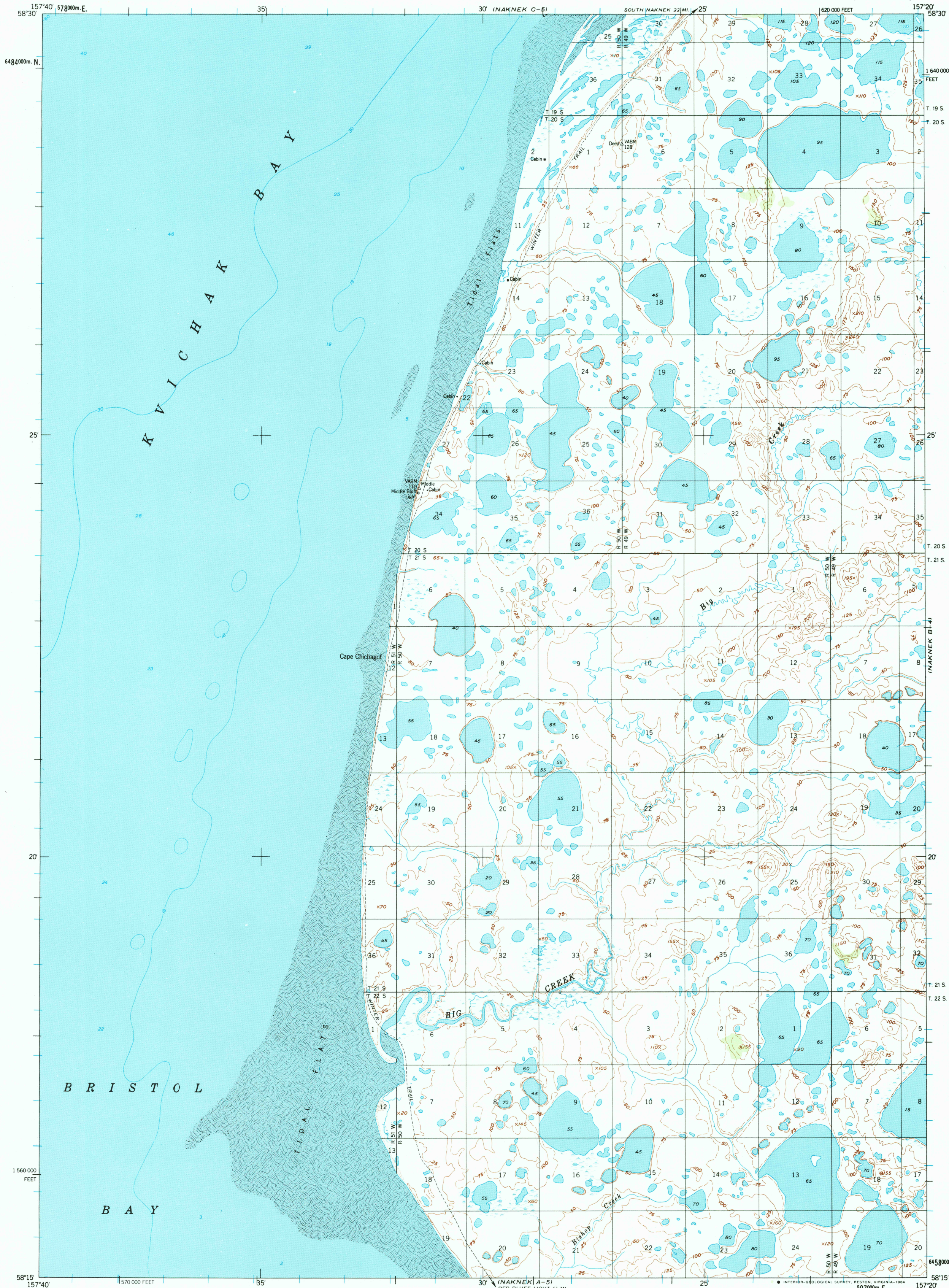


NAKNEK C-6)

UNITED STATES
DEPARTMENT OF THE INTERIOR
GEOLOGICAL SURVEY

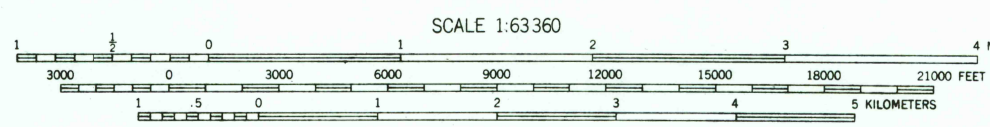
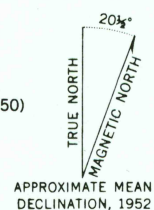
NAKNEK (B-5) QUADRANGLE
ALASKA
1:63 360 SERIES (TOPOGRAPHIC)

NAKNEK C-4)



Mapped by the Defense Mapping Agency
Published for civil use by the Geological Survey
Control by NOS/NOAA and USCE
Topography by photogrammetric methods from aerial photographs
taken 1951. Field checked 1952.
Selected hydrographic data compiled from NOS/NOAA chart 16323 (1950)
This information is not intended for navigational purposes
Projection and 1000-meter grid ticks shown in blue:
Universal Transverse Mercator, zone 4
10,000-foot grid ticks based on Alaska coordinate
system, zone 6. 1927 North American Datum
To place on the predicted North American Datum 1983 move
the projection lines 82 meters north and 136 meters east
Land lines represent unsurveyed and unmarked locations
predetermined by the Bureau of Land Management
Folio S-21, Seward Meridian
Swamps, as portrayed, indicate only the wetter areas
usually of low relief, as interpreted from aerial photographs
Lake elevations are unchecked
The Alaska Maritime National Wildlife Refuge consists of
all the public land in the coastal waters and adjacent
seas of Alaska consisting of islands, islets, rocks, reefs,
capes and spires

There may be private inholdings within the boundaries of
the National or State reservations shown on this map



CONTOUR INTERVAL 50 FEET
DASHED LINES REPRESENT 25-FOOT CONTOURS
NATIONAL GEODETIC VERTICAL DATUM OF 1929
DEPTH CURVES AND SOUNDINGS IN FEET—DATUM IS MEAN LOWER LOW WATER
SHORELINE SHOWN REPRESENTS THE APPROXIMATE LINE OF MEAN HIGH WATER
THE MEAN RANGE OF TIDE IS APPROXIMATELY 15 FEET
FOR SALE BY U. S. GEOLOGICAL SURVEY
FAIRBANKS, ALASKA 99701, DENVER, COLORADO 80225, OR RESTON, VIRGINIA 22092
A FOLDER DESCRIBING TOPOGRAPHIC MAPS AND SYMBOLS IS AVAILABLE ON REQUEST



ROAD CLASSIFICATION
Trails

NAKNEK (B-5), ALASKA
N5815-W15720/15X20
1952
MINOR REVISIONS 1983