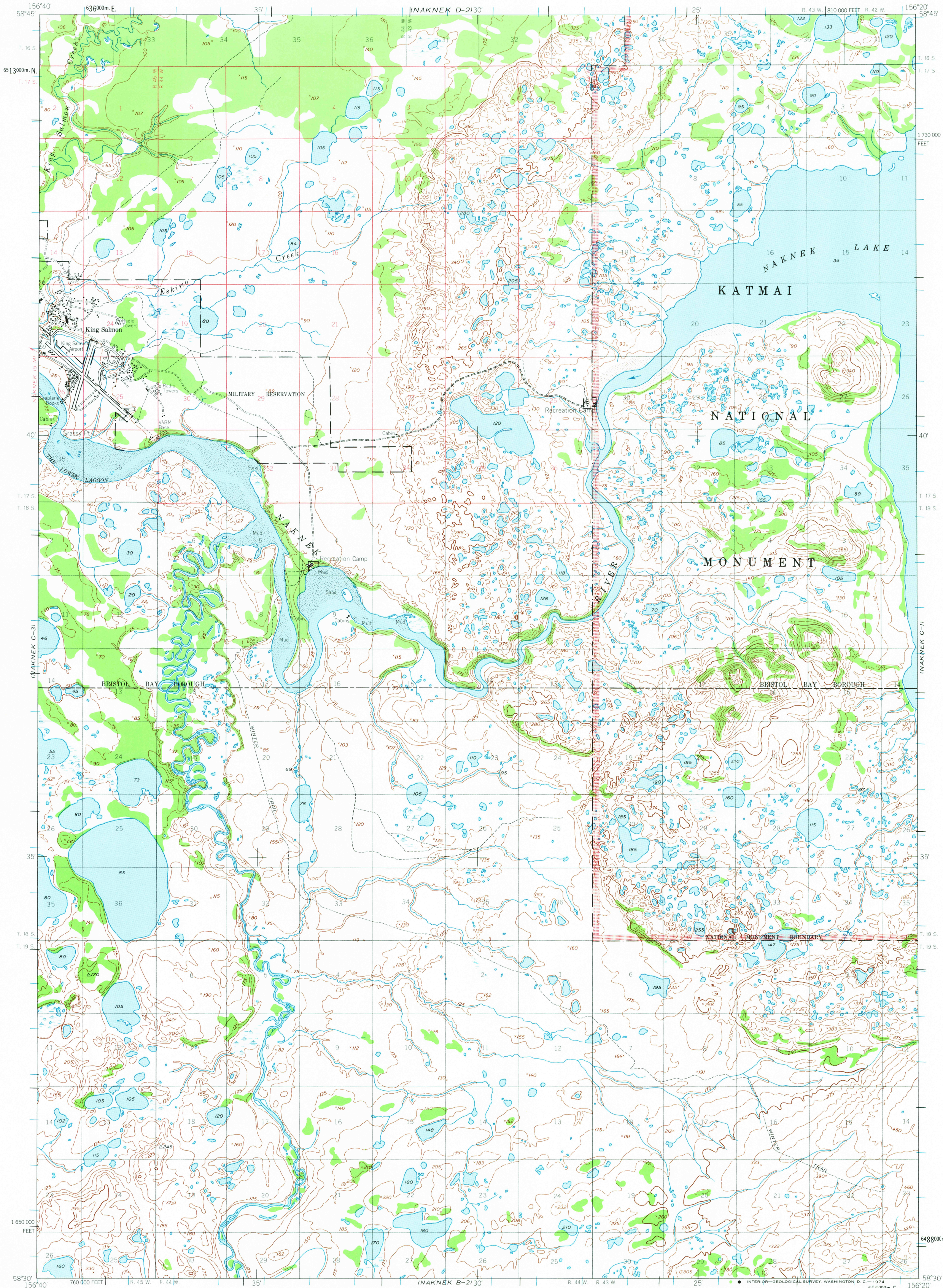


NAKNEK D-31

UNITED STATES
DEPARTMENT OF THE INTERIOR
GEOLOGICAL SURVEY

NAKNEK (C-2) QUADRANGLE
ALASKA
1:63 360 SERIES (TOPOGRAPHIC)

NAKNEK D-11



NAKNEK B-31

Mapped by the Army Map Service
Published for civil use by the Geological Survey
Control by USC & GS and USCE
Topography by photogrammetric methods from
aerial photographs taken 1951
Field annotated 1952. Map not field checked
Selected hydrographic data compiled from USC & GS
Chart 9051 (1950). This information is not intended
for navigational purposes
Universal Transverse Mercator projection. 1927 North American datum
10,000-foot grid based on Alaska coordinate system, zone 6
1000-meter Universal Transverse Mercator grid ticks,
zone 4, shown in blue
Gray land lines represent unsurveyed and unmarked locations
predetermined by the Bureau of Land Management
Folios S-18 and S-22, Seward Meridian
Lake elevations are unchecked



CONTOUR INTERVAL 50 FEET
DASHED LINES REPRESENT 25-FOOT CONTOURS
DATUM IS APPROXIMATE MEAN SEA LEVEL
SOUNDINGS IN FEET DATUM IS MEAN LOWER LOW WATER
SHOULDER LINE SHOWN REPRESENTS THE APPROXIMATE LINE OF MEAN HIGH WATER
THE MEAN RANGE OF TIDE IS APPROXIMATELY 33 FEET



ROAD CLASSIFICATION
Light-duty ——— Unimproved dirt - - - - -

FOR SALE BY U. S. GEOLOGICAL SURVEY
FAIRBANKS, ALASKA 99701, DENVER, COLORADO 80225, OR WASHINGTON, D. C. 20242
A FOLDER DESCRIBING TOPOGRAPHIC MAPS AND SYMBOLS IS AVAILABLE ON REQUEST

NAKNEK (C-2), ALASKA
N5830-W15620/15X20
1952
MINOR REVISIONS 1973

JUN 25 1974

USGS
Historical File
Topographic Division

0625