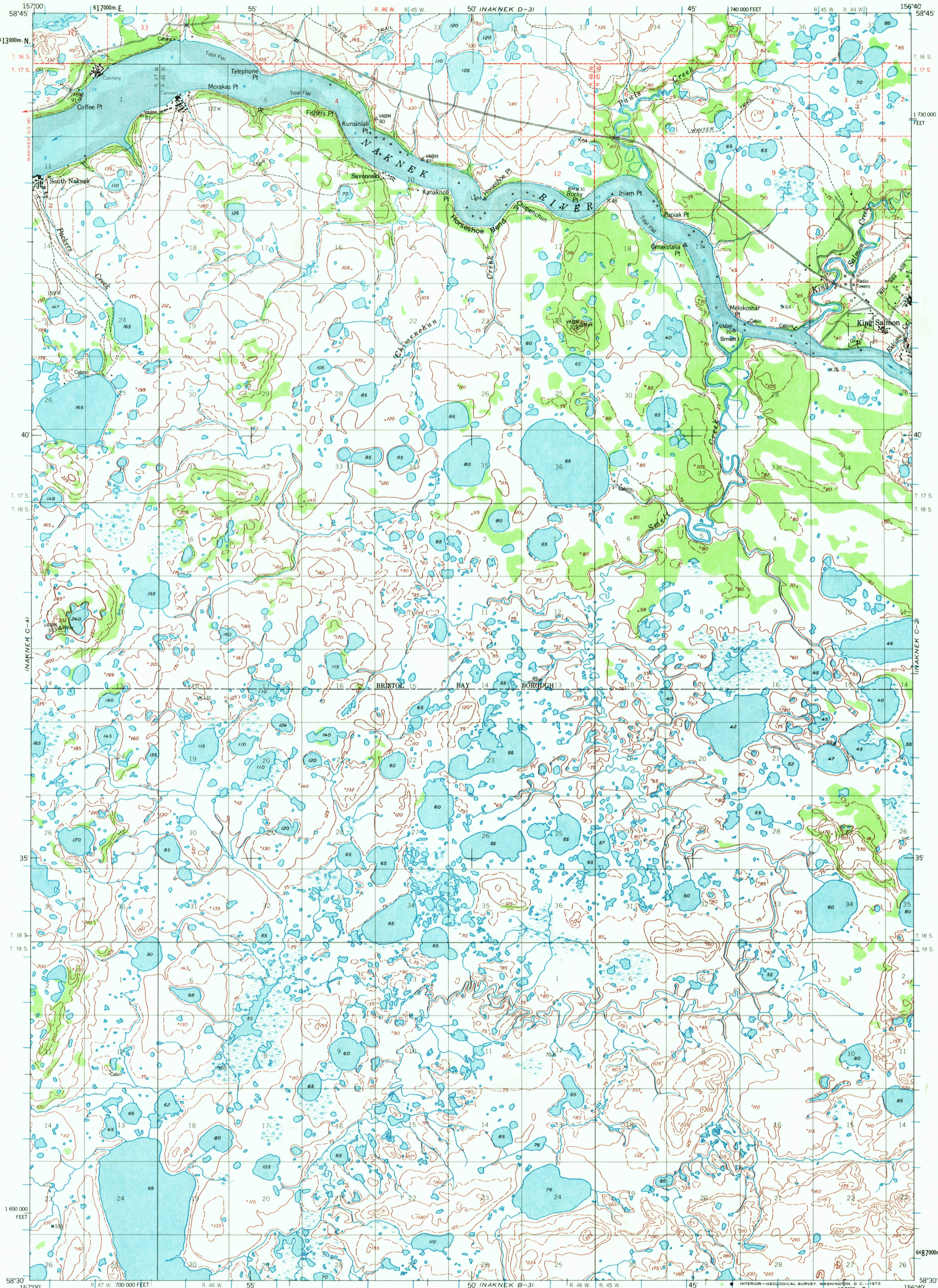


NAKNEK D-4

UNITED STATES  
DEPARTMENT OF THE INTERIOR  
GEOLOGICAL SURVEY

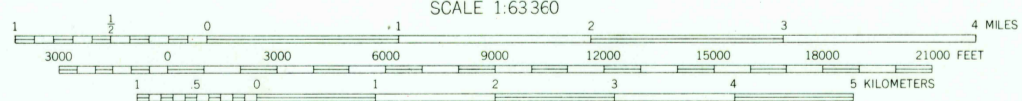
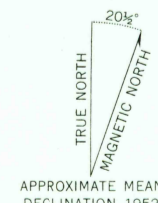
NAKNEK (C-3) QUADRANGLE  
ALASKA  
1:63 360 SERIES (TOPOGRAPHIC)

NAKNEK D-2



NAKNEK B-4

Mapped by the Army Map Service  
Published for civil use by the Geological Survey  
Control by USC&GS and USCE  
Topography by photogrammetric methods from aerial photographs taken 1951. Field annotated 1952. Map not field checked  
Selected hydrographic data compiled from USC&GS Chart 9051 (1950). This information is not intended for navigational purposes  
Universal Transverse Mercator projection, 1927 North American datum  
10,000-foot grid based on Alaska coordinate system, zone 6  
1000-meter Universal Transverse Mercator grid ticks, zone 4, shown in blue  
Gray land lines represent unurveyed and unmarked locations predetermined by the Bureau of Land Management  
Folios S-18 and S-22, Seward Meridian  
Lake elevations are unchecked



CONTOUR INTERVAL 50 FEET  
DASHED LINES REPRESENT 25-FOOT CONTOURS  
DATUM IS APPROXIMATE MEAN SEA LEVEL  
SOUNDINGS IN FEET DATUM IS MEAN LOWER LOW WATER  
SHORELINE SHOWN REPRESENTS THE APPROXIMATE LINE OF MEAN HIGH WATER  
THE MEAN RANGE OF TIDE IS APPROXIMATELY 15 FEET

FOR SALE BY U. S. GEOLOGICAL SURVEY  
FAIRBANKS, ALASKA 99701, DENVER, COLORADO 80225, OR WASHINGTON, D.C. 20242  
A FOLDER DESCRIBING TOPOGRAPHIC MAPS AND SYMBOLS IS AVAILABLE ON REQUEST



ROAD CLASSIFICATION  
Light-duty ————— Unimproved dirt - - - - -

NAKNEK (C-3), ALASKA  
N5830-W15640/15X20

1952  
MINOR REVISIONS 1971

USGS  
HISTORICAL FILE  
TOPOGRAPHIC DIVISION

3100  
AUG 28 1972