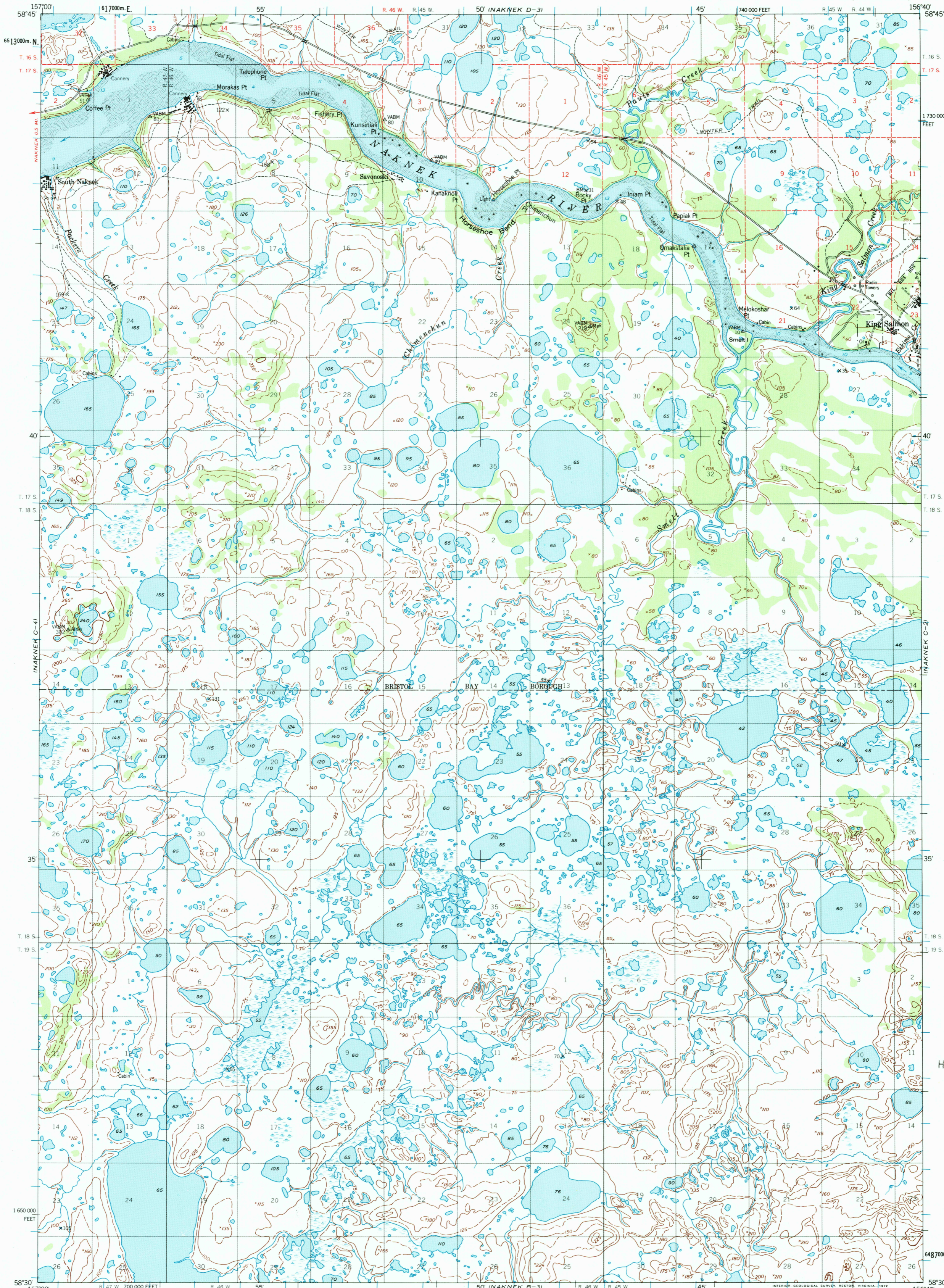




U.S. DEPARTMENT OF THE INTERIOR
U.S. GEOLOGICAL SURVEY

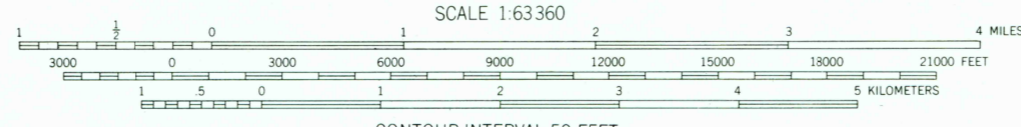
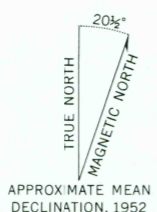
NAKNEK (C-3) QUADRANGLE
ALASKA
1:63 360 SERIES (TOPOGRAPHIC)



RECEIVED
OCT 31 2001
USGS/IML
HISTORICAL MAP ARCHIVES



Mapped by the Army Map Service
Published for civil use by the Geological Survey
Control by USCGS and USCE
Topography by photogrammetric methods from aerial photographs taken 1951, field annotated 1952. Map not field checked
Selected hydrographic data compiled from USCGS Chart 9051 (1950). This information is not intended for navigational purposes
Universal Transverse Mercator projection, 1927 North American datum 10,000-foot grid based on Alaska coordinate system, zone 6 1000-meter Universal Transverse Mercator grid ticks, zone 4, shown in blue
Gray land lines represent unsurveyed and unmarked locations predetermined by the Bureau of Land Management
Folios S-18 and S-22, Seward Meridian
Lake elevations are unchecked



SCALE 1:63 360
CONTOUR INTERVAL 50 FEET
DASHED LINES REPRESENT 25-FOOT CONTOURS
DATUM IS APPROXIMATE MEAN SEA LEVEL
SOUNDINGS IN FEET. DATUM IS MEAN LOWER LOW WATER
SHORELINE SHOWN REPRESENTS THE APPROXIMATE LINE OF MEAN HIGH WATER
THE MEAN RANGE OF TIDE IS APPROXIMATELY 15 FEET



ROAD CLASSIFICATION
Light-duty ——— Unimproved dirt - - - - -

FOR SALE BY U.S. GEOLOGICAL SURVEY, P.O. BOX 25286, DENVER, COLORADO 80225
A FOLDER DESCRIBING TOPOGRAPHIC MAPS AND SYMBOLS IS AVAILABLE ON REQUEST

NAKNEK (C-3), ALASKA
N5830-W15640/15X20

1952
MINOR REVISIONS 1971

