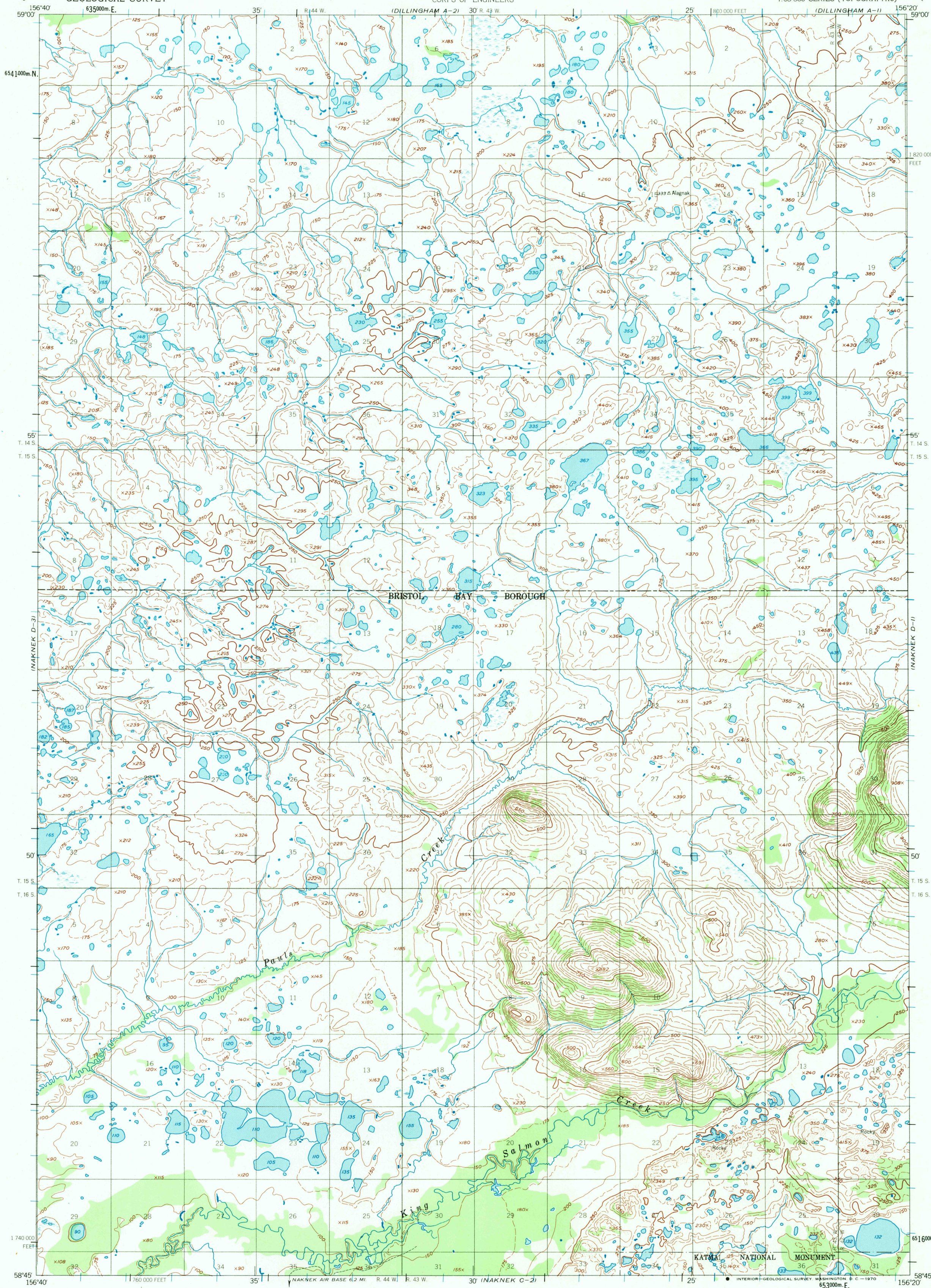


UNITED STATES
DEPARTMENT OF THE INTERIOR
GEOLOGICAL SURVEY

UNITED STATES
DEPARTMENT OF THE ARMY
CORPS OF ENGINEERS

NAKNEK (D-2) QUADRANGLE
ALASKA
1:63 360 SERIES (TOPOGRAPHIC)



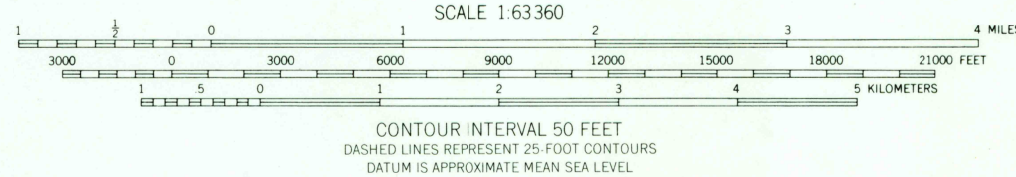
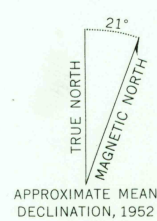
Mapped by the Army Map Service
Published for civil use by the Geological Survey

Control by USC&GS and USCE

Topography by photogrammetric methods from aerial photographs
taken 1951, field annotated 1952. Map not field checked

Universal Transverse Mercator projection, 1927 North American datum
10,000-foot grid based on Alaska coordinate system, zone 6
1000-meter Universal Transverse Mercator grid ticks,
zone 4, shown in blue

Land lines represent unsurveyed and unmarked locations
predetermined by the Bureau of Land Management
Folio S-18, Seward Meridian



ROAD CLASSIFICATION

Trails

U.S.G.S.

FILE COPY
TOPOGRAPHIC

NAKNEK (D-2), ALASKA
N5845-W15620/15X20

1952
MINOR REVISIONS 1969

USGS
Historical File
Topographic Division

MAY 4 1970