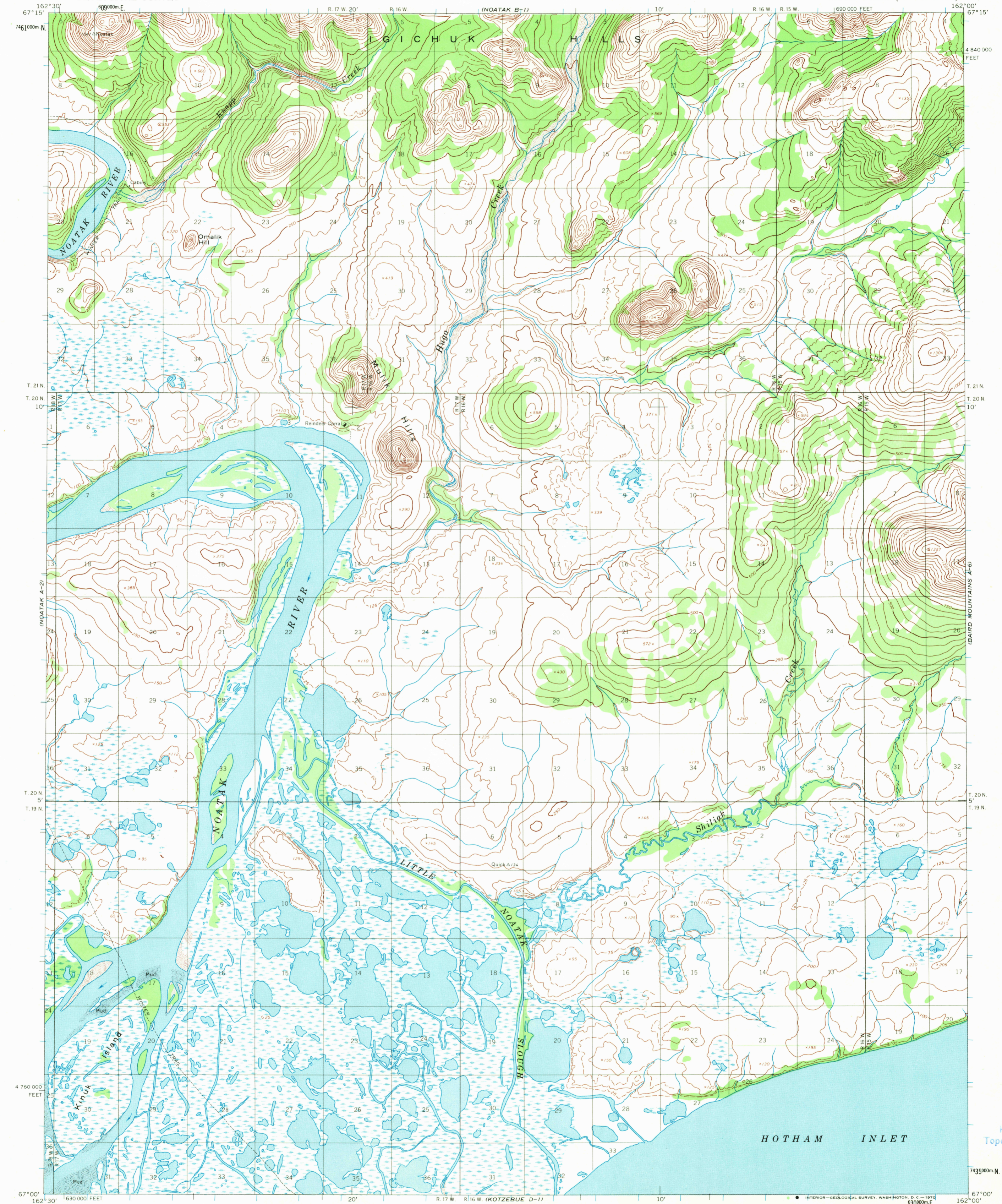
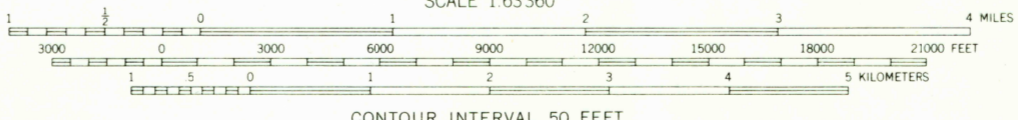
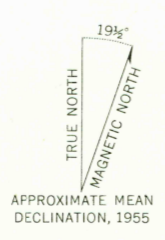


UNITED STATES  
DEPARTMENT OF THE INTERIOR  
GEOLOGICAL SURVEY

NOATAK (A-1) QUADRANGLE  
ALASKA  
1:63 360 SERIES (TOPOGRAPHIC)



Mapped by the Army Map Service  
Published for civil use by the Geological Survey  
Control by USCGS and USCE  
Topography by photogrammetric methods from aerial photographs  
taken 1952 and 1953, field annotated 1955. Map not field checked  
Universal Transverse Mercator projection. 1927 North American datum  
10,000-foot grid based on Alaska coordinate system, zone 7  
1000-meter Universal Transverse Mercator grid ticks,  
zone 3, shown in blue  
Land lines represent unsurveyed and unmarked locations  
predetermined by the Bureau of Land Management  
Folios K-3 and K-4, Kateel River Meridian



SCALE 1:63 360  
CONTOUR INTERVAL 50 FEET  
DASHED LINES REPRESENT 25-FOOT CONTOURS  
DATUM IS MEAN SEA LEVEL  
SHORELINE SHOWN REPRESENTS THE APPROXIMATE LINE OF MEAN HIGH WATER  
THE MEAN RANGE OF TIDE IS APPROXIMATELY 2 FEET

**U.S.G.S.**  
TOPOGRAPHIC DIVISION  
NOATAK (A-1), ALASKA  
N6700-W16200/15 X 30

FOR SALE BY U.S. GEOLOGICAL SURVEY  
FAIRBANKS, ALASKA 99701, DENVER, COLORADO 80225, OR WASHINGTON, D.C. 20242  
A FOLDER DESCRIBING TOPOGRAPHIC MAPS AND SYMBOLS IS AVAILABLE ON REQUEST

1955

JUN 1 1955