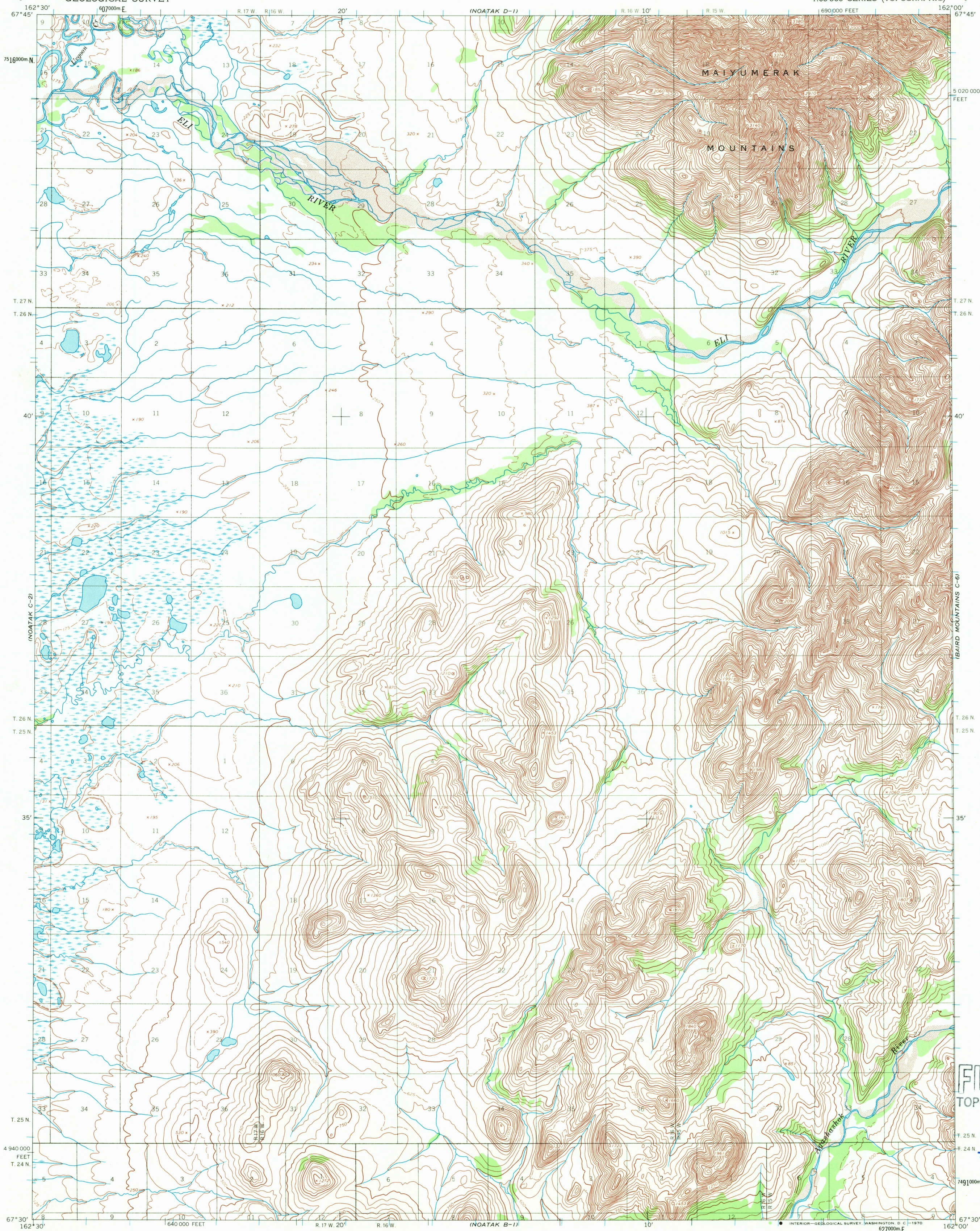


UNITED STATES
DEPARTMENT OF THE INTERIOR
GEOLOGICAL SURVEY

NOATAK (C-1) QUADRANGLE
ALASKA
1:63 360 SERIES (TOPOGRAPHIC)

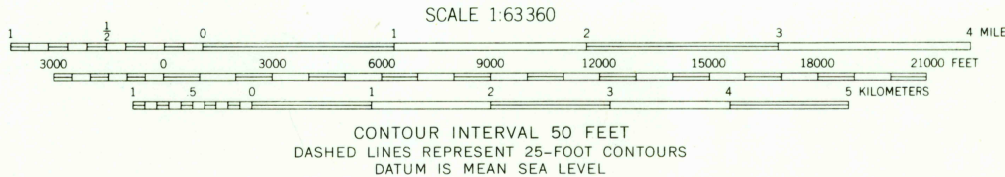
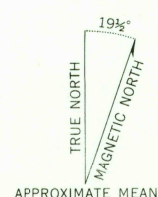


NOATAK B-2

Mapped by the Army Map Service
Published for civil use by the Geological Survey
Control by USC&GS and USCE

Topography by photogrammetric methods from aerial photographs
taken 1952 and 1953, field annotated 1955. Map not field checked
Universal Transverse Mercator projection. 1927 North American datum
10,000-foot grid based on Alaska coordinate system, zone 7
1000-meter Universal Transverse Mercator grid ticks,
zone 3, shown in blue

Land lines represent unsurveyed and unmarked locations
predetermined by the Bureau of Land Management
Folios K-3 and K-4, Kateel River Meridian



FOR SALE BY U. S. GEOLOGICAL SURVEY
FAIRBANKS, ALASKA 99701, DENVER, COLORADO 80225, OR WASHINGTON, D. C. 20242
A FOLDER DESCRIBING TOPOGRAPHIC MAPS AND SYMBOLS IS AVAILABLE ON REQUEST



ROAD CLASSIFICATION
No roads or trails in this area

NOATAK (C-1), ALASKA
N6730-W16200/15 X 30
1955

U.S.G.S.
FILE CO
TOPOGRAPHIC C

USGS
Historical File
Topographic Div

284
AUG 6