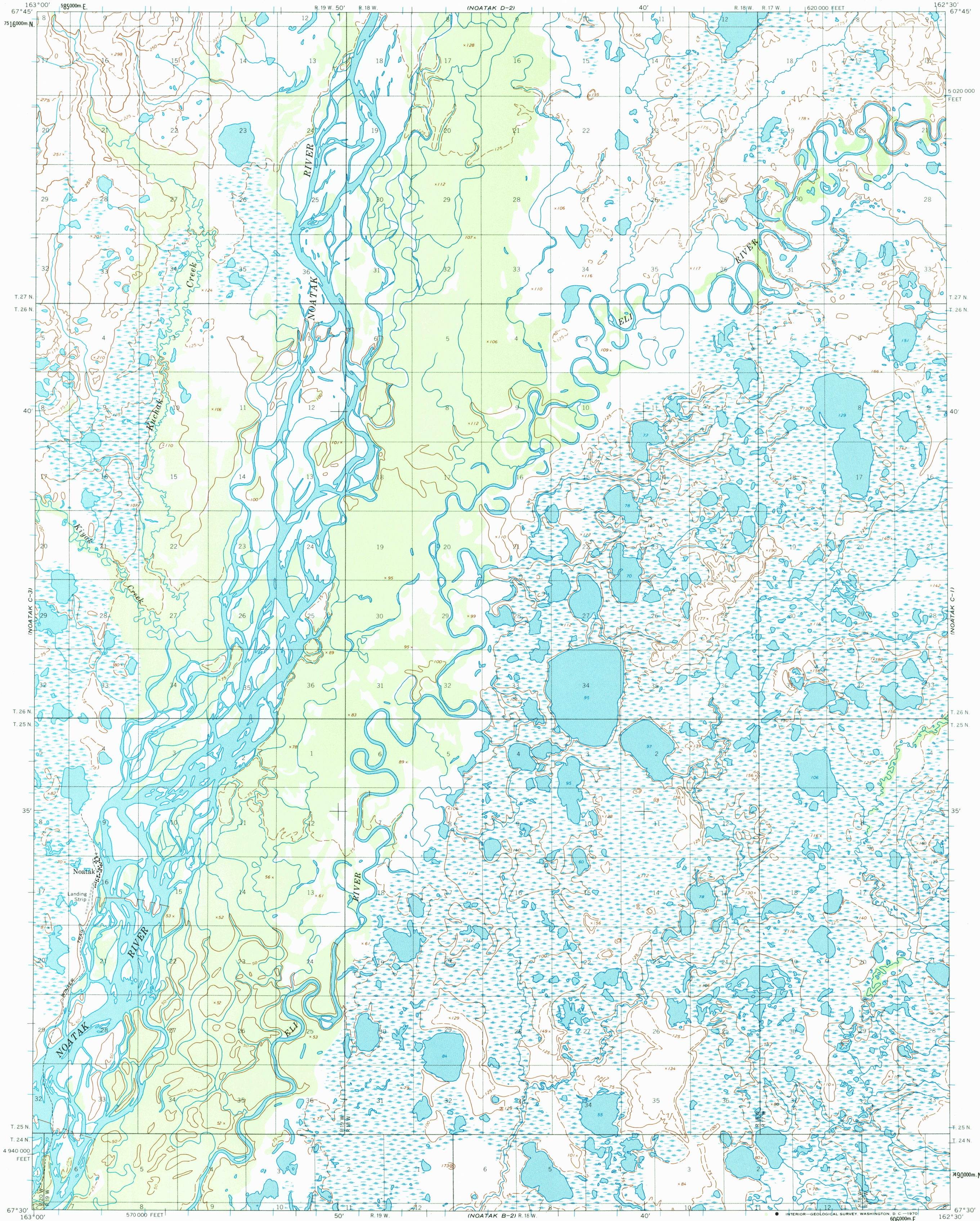


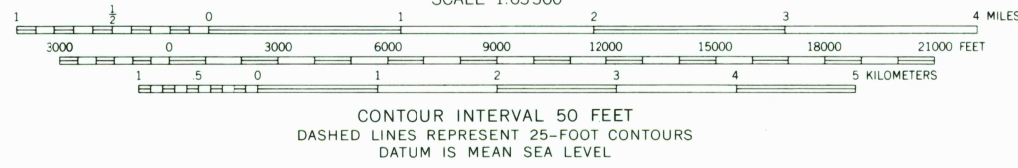
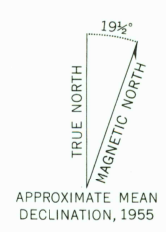
UNITED STATES  
DEPARTMENT OF THE INTERIOR  
GEOLOGICAL SURVEY

NOATAK (C-2) QUADRANGLE  
ALASKA  
1:63 360 SERIES (TOPOGRAPHIC)



NOATAK B-2

Mapped by the Army Map Service  
Published for civil use by the Geological Survey  
Control by USC&GS and USCE  
Topography by photogrammetric methods from aerial photographs  
taken 1952 and 1955, field annotated 1955. Map not field checked  
Universal Transverse Mercator projection. 1927 North American datum  
10,000-foot grid based on Alaska coordinate system, zone 7  
1000-meter Universal Transverse Mercator grid ticks,  
zone 3, shown in blue  
Land lines represent unsurveyed and unmarked locations  
predetermined by the Bureau of Land Management  
Folio K-4, Katel River Meridian



ROAD CLASSIFICATION  
Trails

FOR SALE BY U. S. GEOLOGICAL SURVEY  
FAIRBANKS, ALASKA 99701, DENVER, COLORADO 80225, OR RESTON, VIRGINIA 22092  
A FOLDER DESCRIBING TOPOGRAPHIC MAPS AND SYMBOLS IS AVAILABLE ON REQUEST

NOATAK (C-2), ALASKA  
N6730—W16230/15 X 30  
1955

REC'D FILE COPY