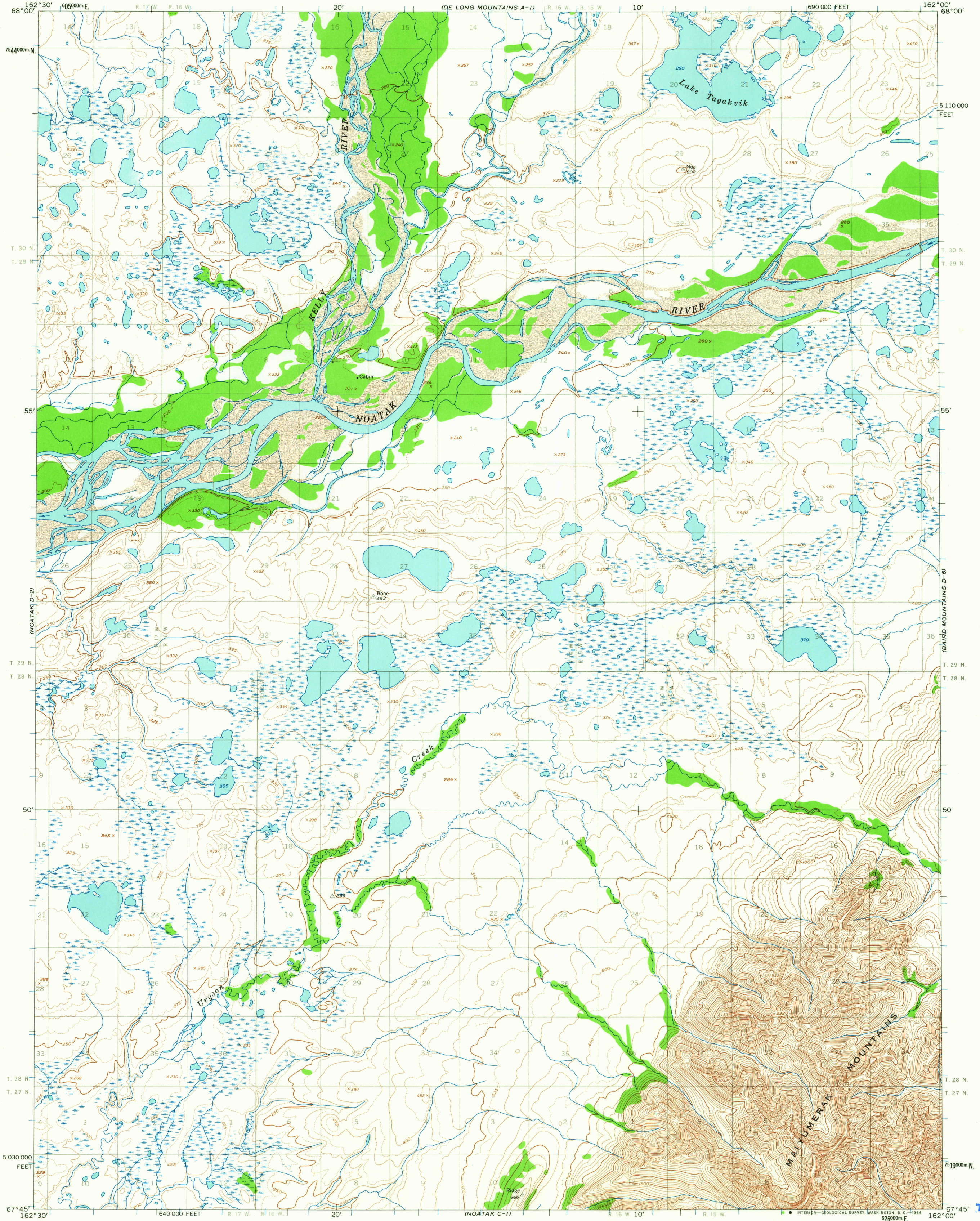


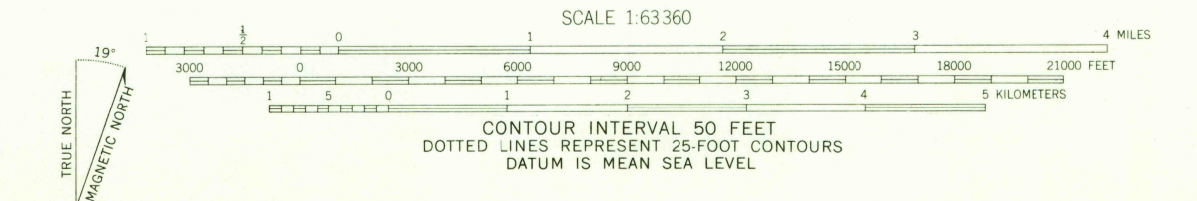
UNITED STATES  
DEPARTMENT OF THE INTERIOR  
GEOLOGICAL SURVEY

NOATAK (D-1) QUADRANGLE  
ALASKA  
1:63 360 SERIES (TOPOGRAPHIC)



NOATAK D-2)  
NOATAK C-1)  
NOATAK C-2)

Mapped by the Army Map Service  
Edited and published by the Geological Survey  
Control by USCGS and USCE  
Topography by photogrammetric methods from aerial photographs  
taken 1952 and 1953, field annotated 1955. Map not field checked  
Universal Transverse Mercator projection. 1927 North American datum  
10,000-foot grid based on Alaska coordinate system, zones 7  
1000-meter Universal Transverse Mercator grid ticks,  
zone 3, shown in blue  
Land lines represent unsurveyed and unmarked locations  
predetermined by the Bureau of Land Management  
Folios K-3 and K-4, Kateel River Meridian



ROAD CLASSIFICATION  
No roads or trails in this area

ALASKA  
QUADRANGLE LOCATION

NOATAK (D-1), ALASKA  
N6745-W16200/15 X 30  
1955

U.S.G. FILE C TOPOGRAPHIC