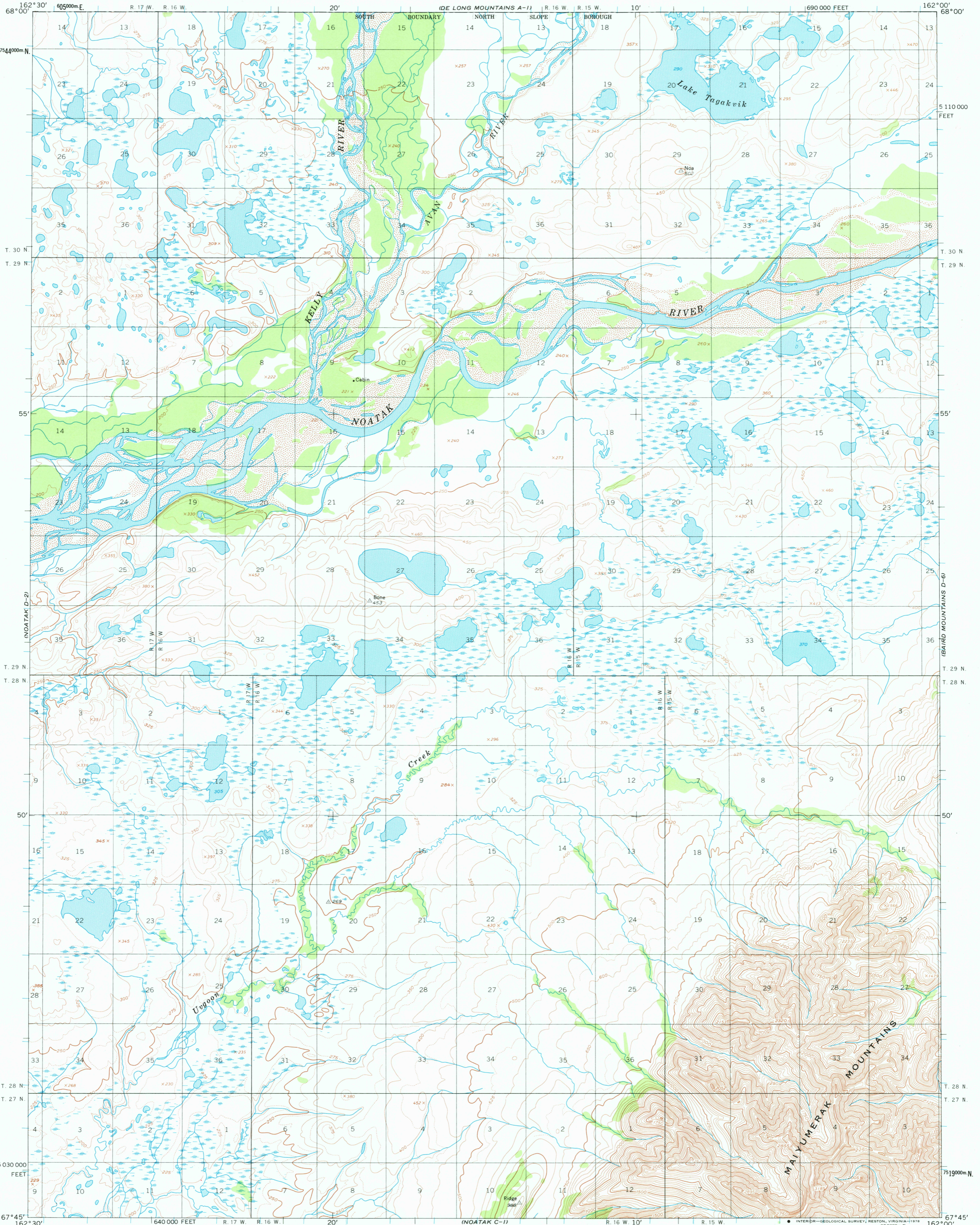


UNITED STATES
DEPARTMENT OF THE INTERIOR
GEOLOGICAL SURVEY

NOATAK (D-1) QUADRANGLE
ALASKA
1:63 360 SERIES (TOPOGRAPHIC)



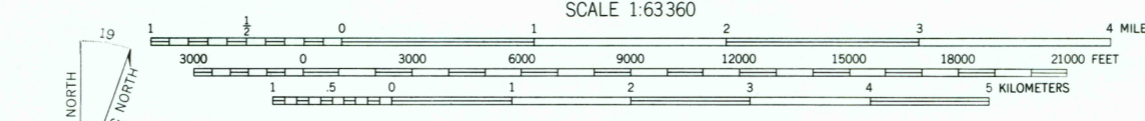
NOATAK C-2) Mapped by the Army Map Service
Edited and published by the Geological Survey

Control by USC&GS and USCE

Topography by photogrammetric methods from aerial photographs
taken 1952 and 1953, field annotated 1955. Map not field checked

Universal Transverse Mercator projection. 1927 North American datum
10,000-foot grid based on Alaska coordinate system, zone 7
1000-meter Universal Transverse Mercator grid ticks,
zone 3, shown in blue

Land lines represent unsurveyed and unmarked locations
predetermined by the Bureau of Land Management
Folios K-3 and K-4, Katerl River Meridian



SCALE 1:63360
CONTOUR INTERVAL 50 FEET
DOTTED LINES REPRESENT 25 FOOT CONTOURS
NATIONAL GEODETIC VERTICAL DATUM OF 1929

FOR SALE BY U. S. GEOLOGICAL SURVEY
FAIRBANKS, ALASKA 99701, DENVER, COLORADO 80225, OR RESTON, VIRGINIA 22092
A FOLDER DESCRIBING TOPOGRAPHIC MAPS AND SYMBOLS IS AVAILABLE ON REQUEST



ROAD CLASSIFICATION
No roads or trails in this area

NOATAK (D-1), ALASKA
N6745—W16200/15 X 30
1955
MINOR REVISIONS 1976

USGS
Historical File
Topographic Division

1800
FEB 08 1978