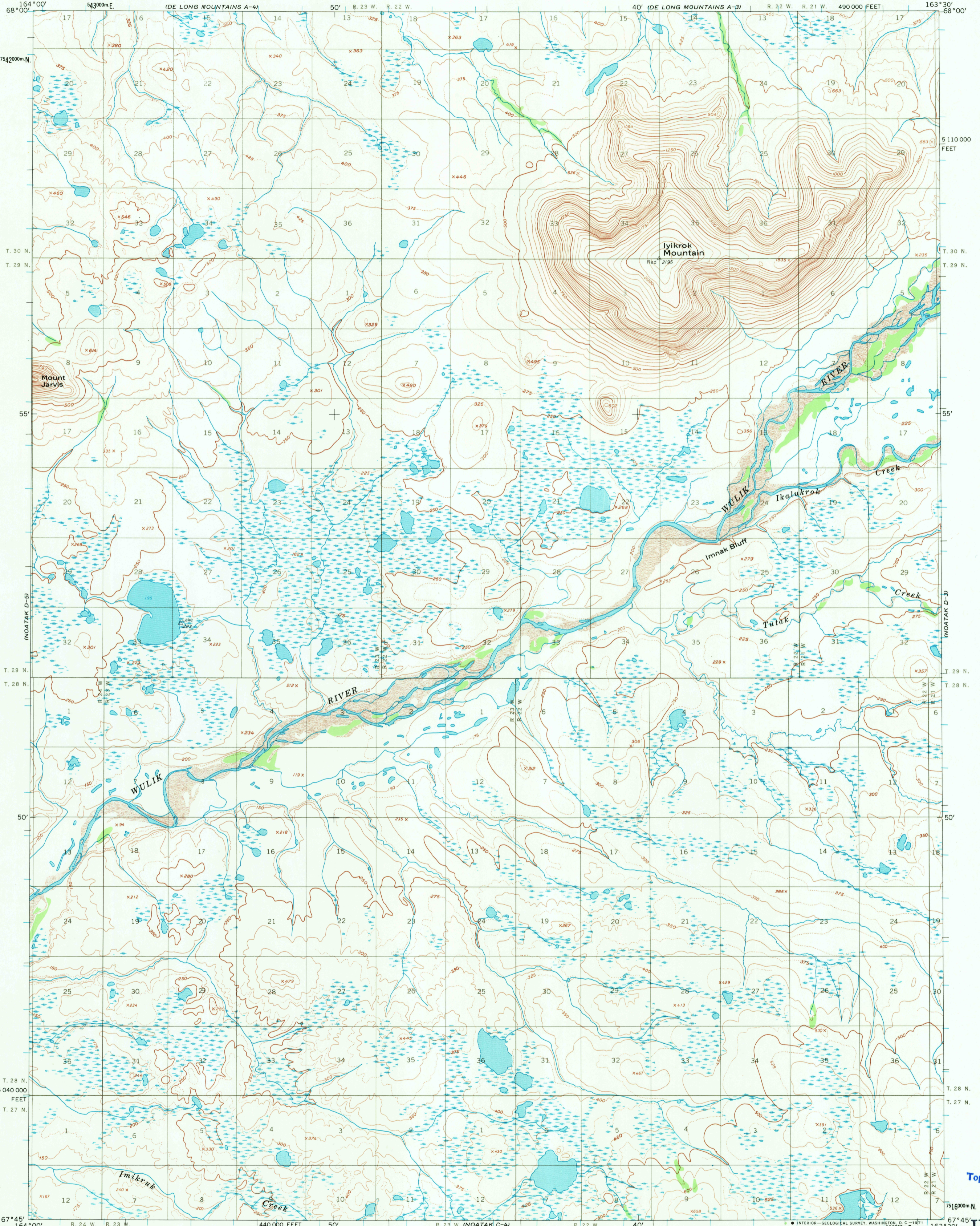
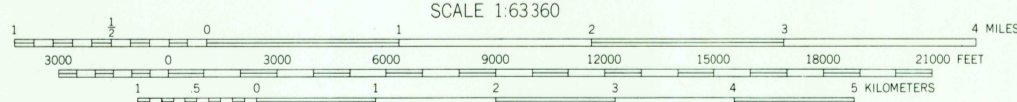
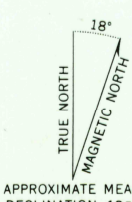


UNITED STATES
DEPARTMENT OF THE INTERIOR
GEOLOGICAL SURVEY

NOATAK (D-4) QUADRANGLE
ALASKA
1:63 360 SERIES (TOPOGRAPHIC)



Mapped by the Army Map Service
Edited and published by the Geological Survey
Control by USC&GS and USCE
Topography by photogrammetric methods from aerial photographs
taken 1952 and 1955, field annotated 1955. Map not field checked
Universal Transverse Mercator projection, 1927 North American datum
10,000-foot grid based on Alaska coordinate system, zone 7
1000-meter Universal Transverse Mercator grid ticks,
zone 3, shown in blue
Land lines represent unsurveyed and unmarked locations
pre-determined by the Bureau of Land Management,
Folio K-4, Kateel River Meridian



CONTOUR INTERVAL 50 FEET
DOTTED LINES REPRESENT 25-FOOT CONTOURS
DATUM IS MEAN SEA LEVEL



ROAD CLASSIFICATION
No roads or trails in this area

NOATAK (D-4), ALASKA
N6745-W16330/15 X30

FOR SALE BY U. S. GEOLOGICAL SURVEY
FAIRBANKS, ALASKA 99701, DENVER, COLORADO 80225 OR WASHINGTON, D. C. 20242
A FOLDER DESCRIBING TOPOGRAPHIC MAPS AND SYMBOLS IS AVAILABLE ON REQUEST

1955

USGS
Historical
Topographic

U.S.G.S.
FILE CO
TOPOGRAPHIC DIV

36

JUN 2