

(TELLER A-2)

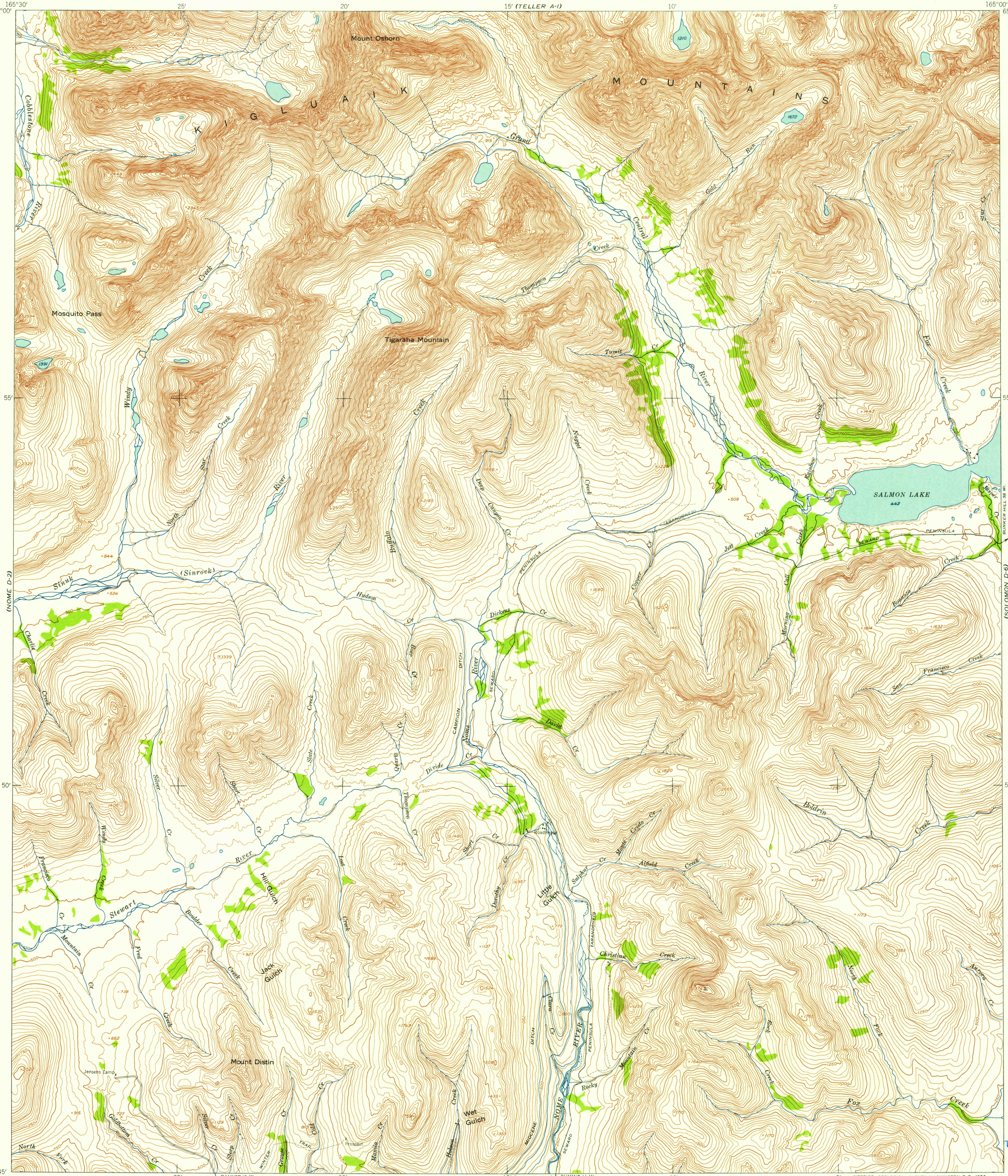
UNITED STATES
DEPARTMENT OF THE INTERIOR
GEOLOGICAL SURVEY

UNITED STATES
DEPARTMENT OF THE ARMY
CORPS OF ENGINEERS
15' (TELLER A-1)

U.S.G.S.
FILE COPY
TOPOGRAPHIC DIVISION

NOME (D-1) QUADRANGLE
ALASKA—SECOND JUDICIAL DIVISION
1:63 360 SERIES (TOPOGRAPHIC)

(BENDELEBEN A-6)



Mapped by the Army Map Service
Published for civil use by the Geological Survey
Control by USGS, USC&GS, and USCE
Topography by photogrammetric methods
Aerial photographs taken 1950. Map not field checked
Universal Transverse Mercator projection, zone 3
1927 North American datum
Unchecked elevations are shown in brown

TRUE NORTH
MAGNETIC NORTH
APPROXIMATE MEAN
DECLINATION, 1950

SCALE 1:63 360
0 3000 6000 9000 12000 15000 18000 21000 FEET
0 1 2 3 4 5 KILOMETERS
CONTOUR INTERVAL 50 FEET
DASHED LINES REPRESENT HALF-INTERVAL CONTOURS
DATUM IS MEAN SEA LEVEL

ROAD CLASSIFICATION
ALL WEATHER ROADS DRY WEATHER ROADS
Hard-surface None Improved dirt None
Other None Unimproved dirt None
Trails None



U.S.G.S.
FILE COPY
TOPOGRAPHIC DIVISION

NOME (D-1), ALASKA
N6445-W16500/15x30
1950

FOR SALE BY U. S. GEOLOGICAL SURVEY
FAIRBANKS, ALASKA FEDERAL CENTER, DENVER, COLORADO WASHINGTON 25, D. C.
A FOLDER DESCRIBING TOPOGRAPHIC MAPS AND SYMBOLS IS AVAILABLE ON REQUEST

USGS
Historical File
Topographic Division

MAR 20 1956

2 / 20