

(TELLER A-2)

UNITED STATES  
DEPARTMENT OF THE INTERIOR  
GEOLOGICAL SURVEY

UNITED STATES  
DEPARTMENT OF THE ARMY  
CORPS OF ENGINEERS

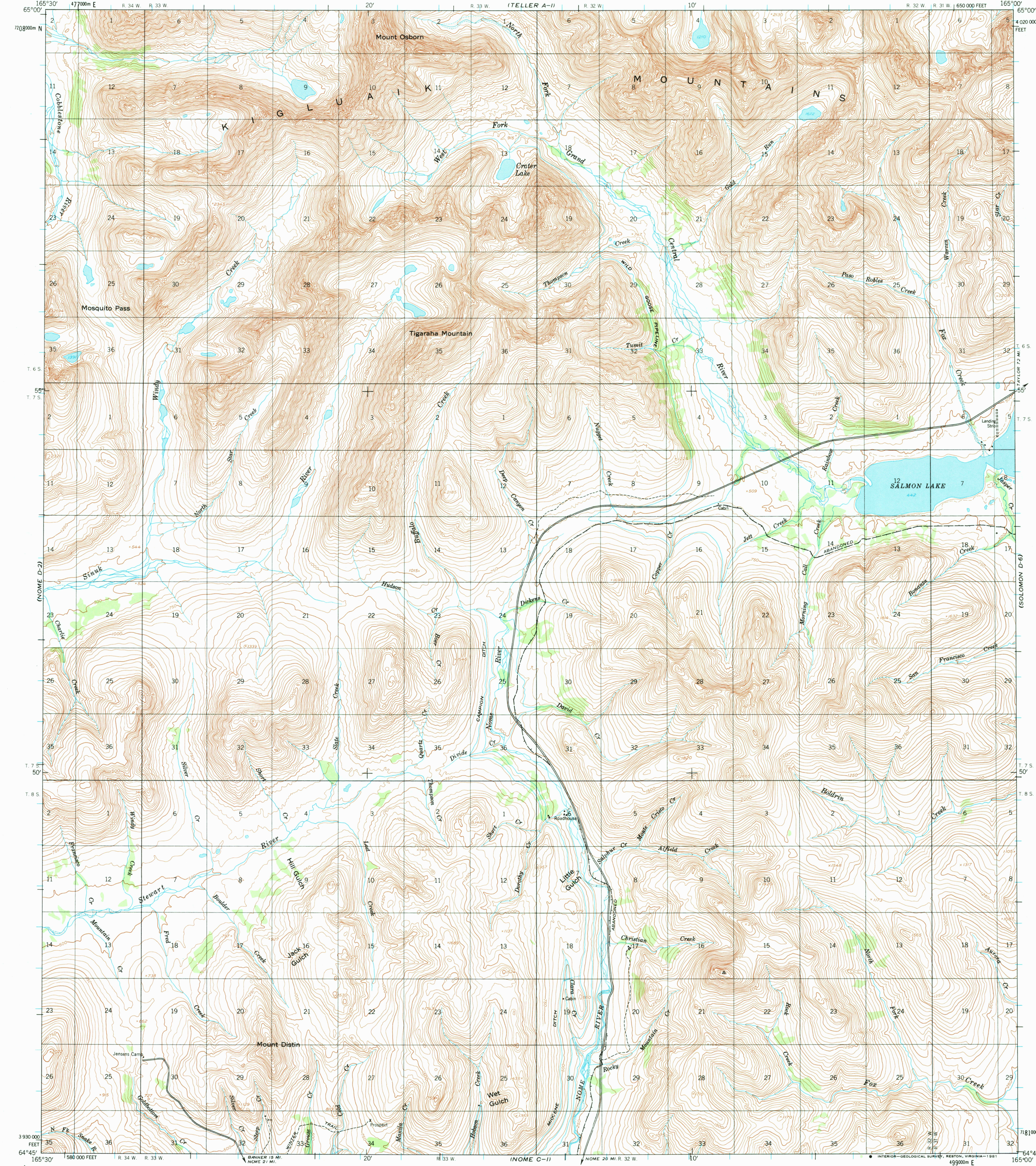
NOME (D-1) QUADRANGLE  
ALASKA  
1:63 360 SERIES (TOPOGRAPHIC)

(BENDELEBYN A-5)

165°30' 477000m E R. 34 W. R. 33 W. 20'

165°30' 477000m E R. 34 W. R. 33 W. 20'

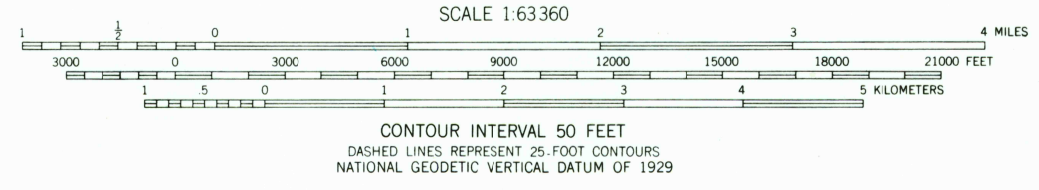
165°30' 477000m E R. 34 W. R. 33 W. 20'



(NOME D-2)

Mapped by the Army Map Service  
Published for civil use by the Geological Survey  
Control by USGS, USC&GS and USCE  
Topography by photogrammetric methods from aerial photographs  
taken 1950. Map not field checked.  
Universal Transverse Mercator projection, 1927 North American datum  
10,000-foot grid based on Alaska coordinate system, zone 8  
1000-meter Universal Transverse Mercator grid ticks,  
zone 3, shown in blue  
Land lines represent unsurveyed and unmarked locations  
predetermined by the Bureau of Land Management  
Folios K-13 and K-14, Kateel River Meridian  
To place on the predicted North American Datum 1983 move  
the projection lines 87 meters north and 130 meters east  
Lake elevations are unchecked

TRUE NORTH  
MAGNETIC NORTH  
APPROXIMATE MEAN  
DECLINATION, 1950



FOR SALE BY U.S. GEOLOGICAL SURVEY  
FAIRBANKS, ALASKA 99701, DENVER, COLORADO 80225, OR RESTON, VIRGINIA 22092  
A FOLDER DESCRIBING TOPOGRAPHIC MAPS AND SYMBOLS IS AVAILABLE ON REQUEST



ROAD CLASSIFICATION  
Light-duty

NOME (D-1), ALASKA  
N6445-W16500/15x30  
1950  
MINOR REVISIONS 1972

USGS  
Historical File  
National Mapping Div.

APR 3 1981

1300