

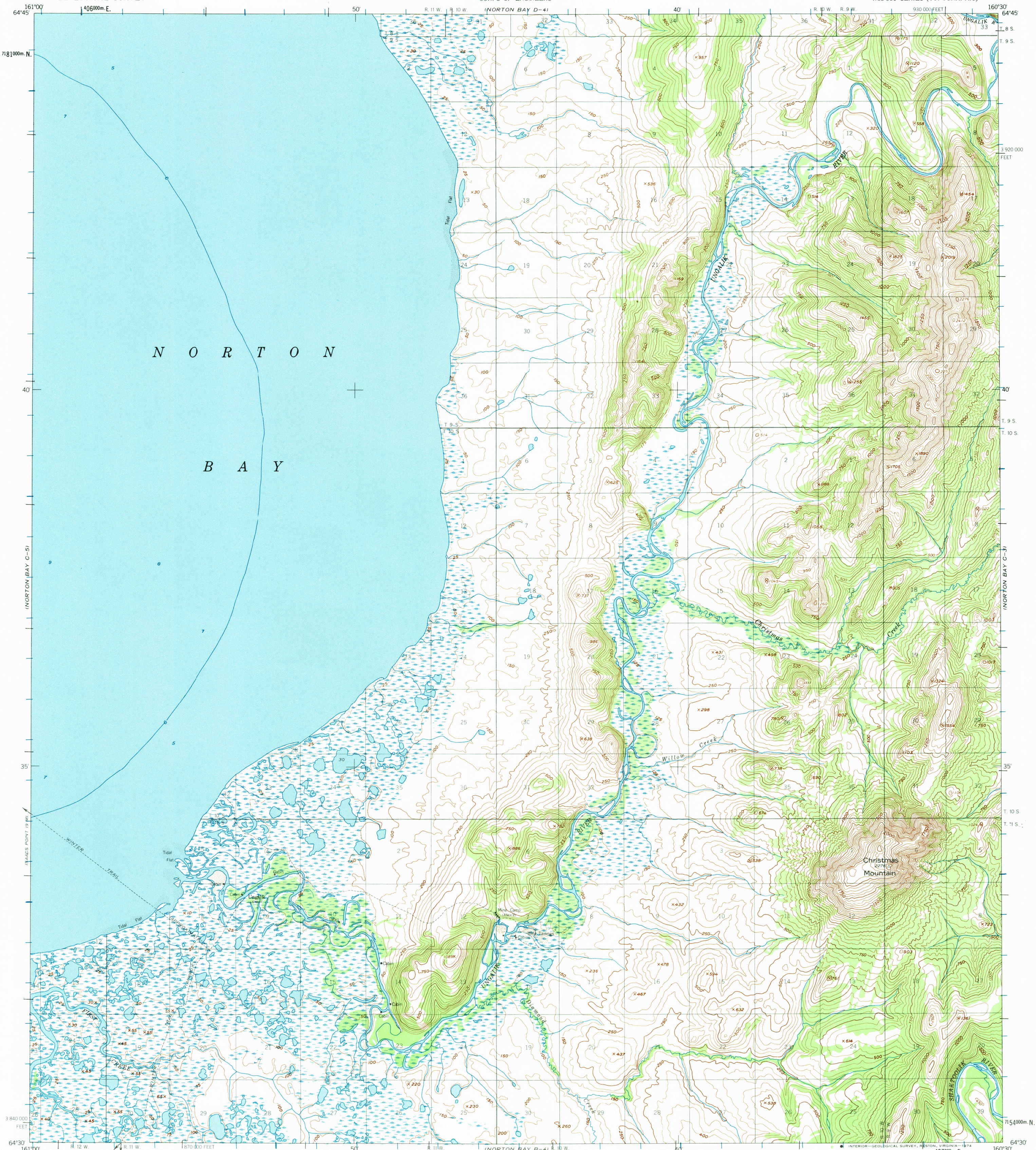
NORTON BAY D-5)

UNITED STATES
DEPARTMENT OF THE INTERIOR
GEOLOGICAL SURVEY

UNITED STATES
DEPARTMENT OF THE ARMY
CORPS OF ENGINEERS

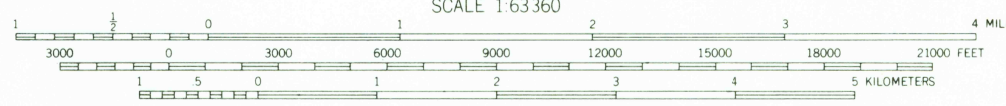
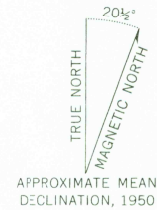
NORTON BAY (C-4) QUADRANGLE
ALASKA
1:63 360 SERIES (TOPOGRAPHIC)

NORTON BAY C-3)



NORTON BAY C-5)

Mapped by the Army Map Service
Published for civil use by the Geological Survey
Control by USC&GS and USCE
Topography by photogrammetric methods from aerial photographs taken 1950. Map not field checked.
Selected hydrographic data compiled from USC&GS survey 2480 (1900). This information is not intended for navigational purposes.
Universal Transverse Mercator projection, 1927 North American datum, 10,000-foot grid based on Alaska coordinate system, zone 7, 1000-meter Universal Transverse Mercator grid ticks, zone 4, shown in blue.
Land lines represent unsurveyed and unmarked locations predetermined by the Bureau of Land Management.
Folio K-12, Kateel River Meridian.
Lake elevation is unchecked.



CONTOUR INTERVAL 50 FEET
DASHED LINES REPRESENT 25 FOOT CONTOURS
DATUM IS MEAN SEA LEVEL
DEPTH CURVES AND SOUNDINGS IN FEET-DATUM IS MEAN LOWER LOW WATER
SHORELINE SHOWN REPRESENTS THE APPROXIMATE LINE OF MEAN HIGH WATER
THE MEAN RANGE OF TIDE IS APPROXIMATELY 2 FEET

FOR SALE BY U.S. GEOLOGICAL SURVEY
FAIRBANKS, ALASKA 99701, DENVER, COLORADO 80225, OR RESTON, VIRGINIA 22092
A FOLDER DESCRIBING TOPOGRAPHIC MAPS AND SYMBOLS IS AVAILABLE ON REQUEST



ROAD CLASSIFICATION
Trails

NORTON BAY (C-4), ALASKA
N6430-W16030/15'30"

1950
MINOR REVISIONS 1973

USGS
HISTORICAL FILE
TOPOGRAPHIC DIVISION

SEP 20 1974

1705