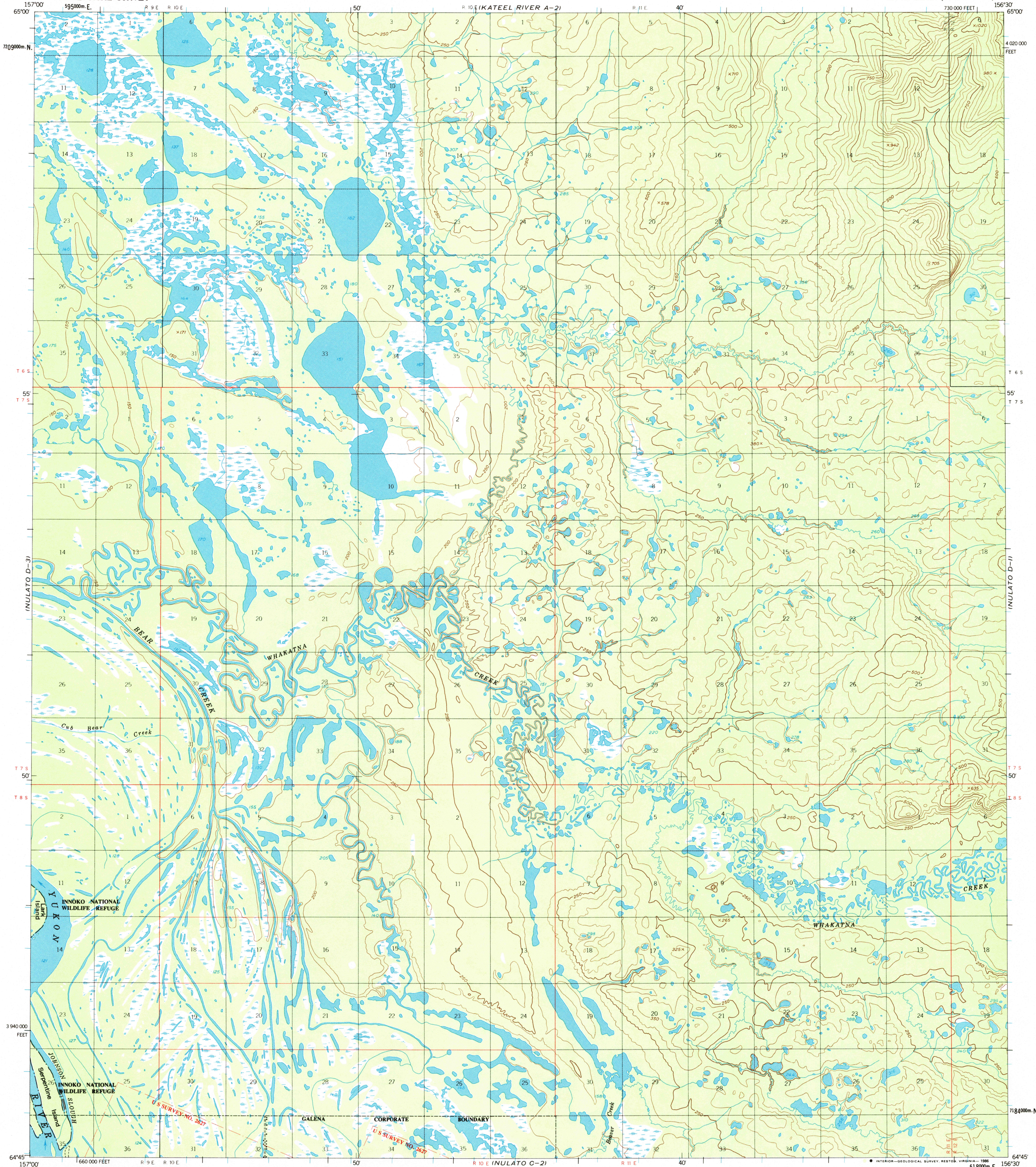


(KATEEL RIVER A-3)

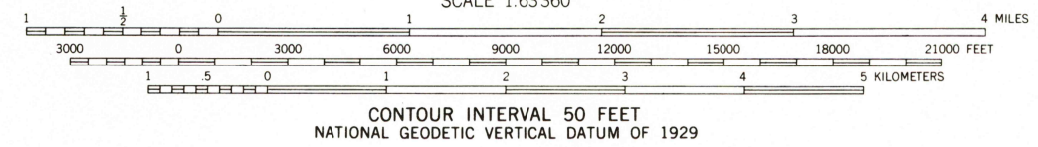
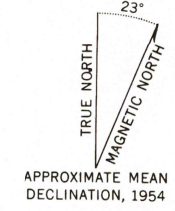
(KATEEL RIVER A-1)

UNITED STATES
DEPARTMENT OF THE INTERIOR
GEOLOGICAL SURVEY

NULATO (D-2) QUADRANGLE
ALASKA
1:63 360 SERIES (TOPOGRAPHIC)



Mapped, edited, and published by the Geological Survey
Control by USCE
Topography by photogrammetric methods from aerial photographs
taken 1952, field annotated 1954. Map not field checked
Projection and 1000-meter grid ticks shown in blue:
Universal Transverse Mercator, zone 4
10,000-foot grid ticks based on Alaska coordinate
system, zone 6. 1927 North American Datum
To place on the predicted North American Datum 1983 move
the projection lines 71 meters north and 121 meters east
Gray land lines represent unsurveyed and unmarked locations
pre-determined by the Bureau of Land Management
Folio K-11, Kateel River Meridian
Swamps, as portrayed, indicate only the wetter areas,
usually of low relief, as interpreted from aerial photographs
Federal reservation boundaries established by The Alaska National
Interest Lands Conservation Act, PL 96-487, Dec. 2, 1980, are
shown as compiled by the administering agencies
There may be private inholdings within the boundaries of
the National or State reservations shown on this map



FOR SALE BY U. S. GEOLOGICAL SURVEY
FAIRBANKS, ALASKA 99701, DENVER, COLORADO 80225, OR RESTON, VIRGINIA 22082
A FOLDER DESCRIBING TOPOGRAPHIC MAPS AND SYMBOLS IS AVAILABLE ON REQUEST



QUADRANGLE LOCATION
NULATO (D-2), ALASKA
64156-GS-TF-063
1954
MINOR REVISION 1985

AUG 29 1986
REC'D FILE COPY

ROAD CLASSIFICATION
Unimproved dirt =-----

(NULATO C-3)

(NULATO C-1)