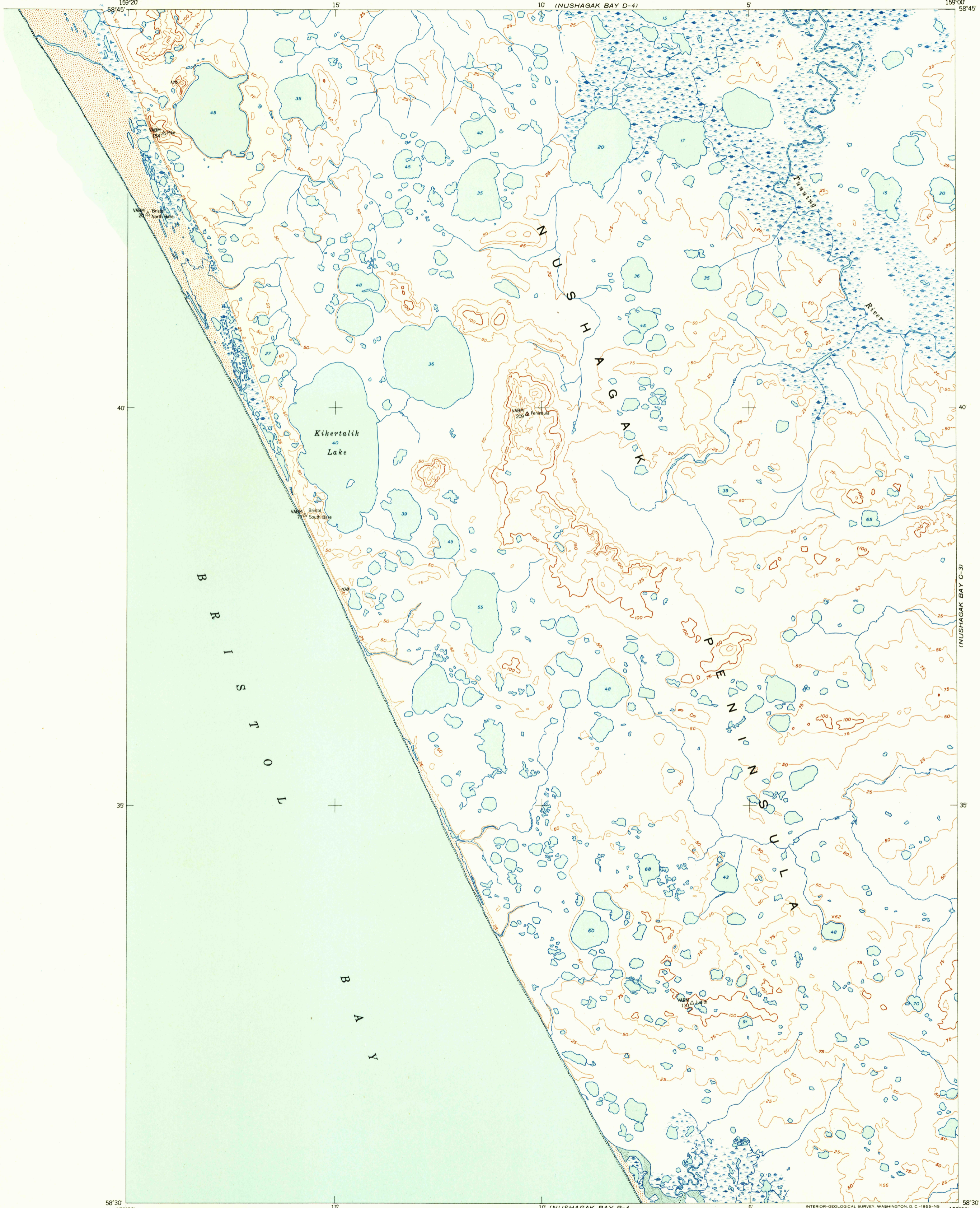


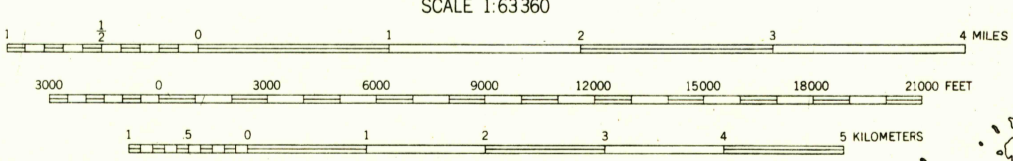
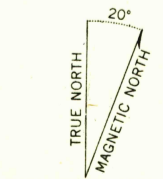
U.S.G.S.
FILE COPY
TOPOGRAPHIC DIVISION



Mapped by the U. S. Coast and Geodetic Survey
Edited and published by the Geological Survey

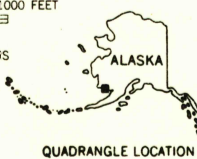
Control by USC&GS
Topography and inshore detail from USC&GS surveys T-9064
and T-9070 as delineated by Reading plotter 1950
Aerial photographs taken 1948

Universal Transverse Mercator projection, zone 4
1927 North American datum
Unchecked elevations are shown in brown and blue



CONTOUR INTERVAL 25 FEET
DATUM IS MEAN SEA LEVEL

SHORELINE SHOWS REPRESENTS THE APPROXIMATE LINE OF MEAN HIGH WATER
THE AVERAGE RANGE OF TIDE IS APPROXIMATELY 9 FEET



ROAD CLASSIFICATION

ALL WEATHER ROADS		DRY WEATHER ROADS	
Hard-surface	None	Improved dirt	None
Other	None	Unimproved dirt	None
		Trails	None

FOR SALE BY U.S. GEOLOGICAL SURVEY
FAIRBANKS, ALASKA FEDERAL CENTER, DENVER, COLORADO WASHINGTON 25, D.C.
A FOLDER DESCRIBING TOPOGRAPHIC MAPS AND SYMBOLS IS AVAILABLE ON REQUEST

QUADRANGLE LOCATION NUSHAGAK BAY (C-4 AND C-5), ALASKA
N5830—W15900/15X20

1950

APR 7 1955

2125