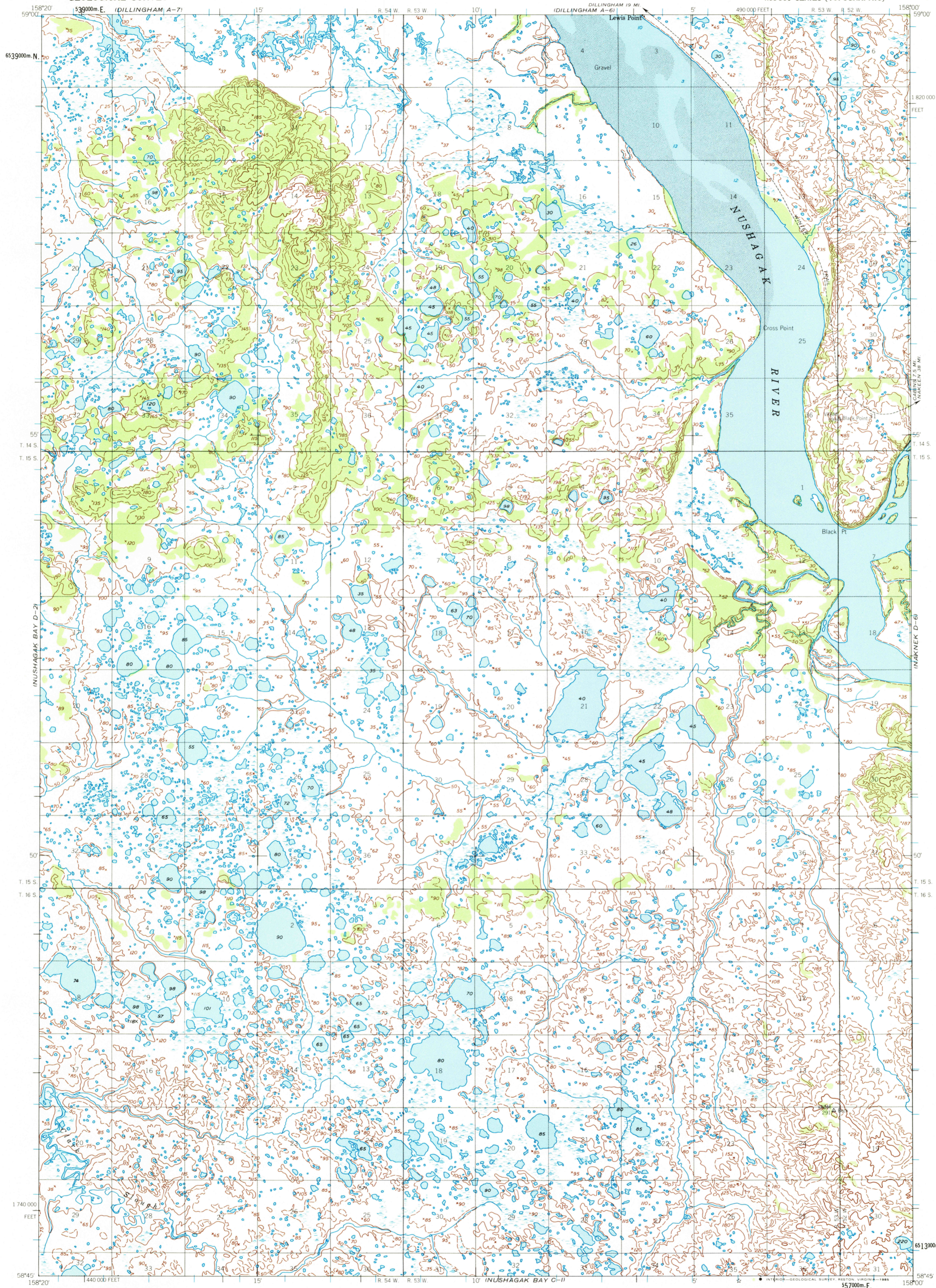


UNITED STATES
DEPARTMENT OF THE INTERIOR
GEOLOGICAL SURVEY

NUSHAGAK BAY (D-1) QUADRANGLE
ALASKA
1:63 360 SERIES (TOPOGRAPHIC)



Mapped by the Defense Mapping Agency
Edited and published by the Geological Survey

Control by NGS/NOAA, and USCE

Topography by photogrammetric methods from aerial photographs
taken 1951; field annotated 1952. Map not field checked
Selected hydrographic data compiled from NOS/NOAA
Chart 16322 (1976)

This information is not intended for navigational purposes

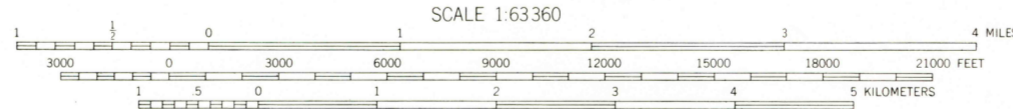
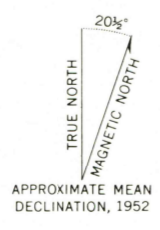
Projection and 1000-meter grid ticks shown in blue:

Universal Transverse Mercator, zone 4
10,000-foot grid ticks based on Alaska coordinate
system, zone 5, 1927 North American Datum
To place on the predicted North American Datum 1983 move
the projection lines 89 meters north and 128 meters east

Land lines represent unsurveyed and unmarked locations
predetermined by the Bureau of Land Management
Folio S-19, Seward Meridian

Lake elevations are unchecked

Swamps, as portrayed, indicate only the wetter areas,
usually of low relief, as interpreted from aerial photographs



SCALE 1:63 360
CONTOUR INTERVAL 50 FEET
DOTTED LINES REPRESENT 25-FOOT CONTOURS
NATIONAL GEODETIC VERTICAL DATUM OF 1929
SOUNDINGS IN FEET DATUM IS MEAN LOWER LOW WATER
SHORELINE SHOWN REPRESENTS THE APPROXIMATE LINE OF MEAN HIGH WATER
THE MEAN RANGE OF TIDE IS APPROXIMATELY 10 FEET



ROAD CLASSIFICATION
Trails

FOR SALE BY U. S. GEOLOGICAL SURVEY
FAIRBANKS, ALASKA 99701, DENVER, COLORADO 80225, OR RESTON, VIRGINIA 22092
A FOLDER DESCRIBING TOPOGRAPHIC MAPS AND SYMBOLS IS AVAILABLE ON REQUEST

NUSHAGAK BAY (D-1), ALASKA
N5845-W15800/15X20

1952

USGS NMD HISTORICAL MAP

DEC 3 1 1985

REC'D FILE COPY