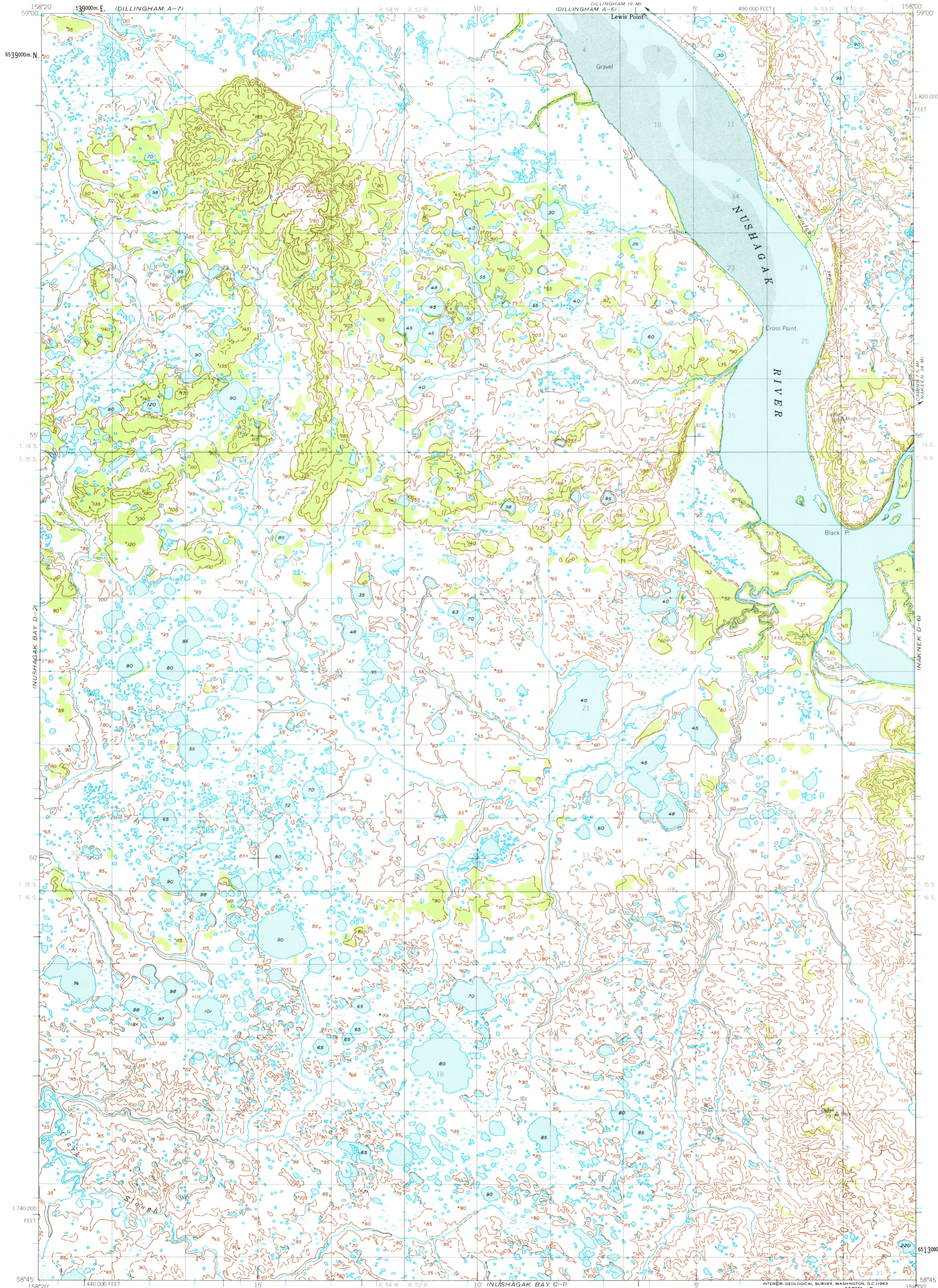
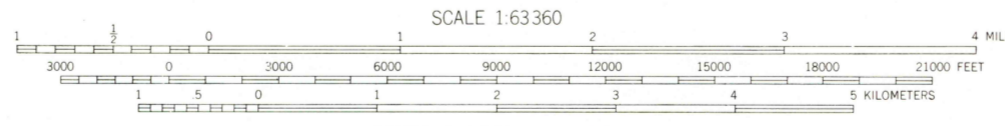
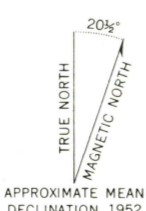


UNITED STATES
DEPARTMENT OF THE INTERIOR
GEOLOGICAL SURVEY

NUSHAGAK BAY (D-1) QUADRANGLE
ALASKA
1:63 360 SERIES (TOPOGRAPHIC)



Mapped by the Army Map Service
Published for civil use by the Geological Survey
Control by USC&GS, and USCE
Topography by photogrammetric methods from
aerial photographs taken 1951. Field annotated 1952
Map not field checked
Selected hydrographic data compiled from USC&GS
Chart 9052 (1950). This information is not intended
for navigational purposes
Universal Transverse Mercator projection
1927 North American datum
10,000-foot grid based on Alaska coordinate system, zone 6
1000-meter Universal Transverse Mercator grid ticks,
zone 4, shown in blue
Land lines represent unsurveyed and unmarked locations
predetermined by the Bureau of Land Management;
Folio S-19, Seward Meridian
Lake elevations are unchecked



CONTOUR INTERVAL 50 FEET
DASHED LINES REPRESENT 25-FOOT CONTOURS
DATUM IS APPROXIMATE MEAN SEA LEVEL
SOUNDINGS IN FEET; DATUM IS MEAN LOWER LOW WATER
SHORELINE SHOWN REPRESENTS THE APPROXIMATE LINE OF MEAN HIGH WATER
THE MEAN RANGE OF TIDE IS APPROXIMATELY 10 FEET



ROAD CLASSIFICATION
Trails

FOR SALE BY U.S. GEOLOGICAL SURVEY
FAIRBANKS, ALASKA DENVER 25, COLORADO WASHINGTON 25, D.C.
A FOLDER DESCRIBING TOPOGRAPHIC MAPS AND SYMBOLS IS AVAILABLE ON REQUEST

NUSHAGAK BAY (D-1), ALASKA
N5845-W15800/15X20
1952

RETURN TO:
USGS AND HISTORICAL MAP ARCHIVES

1200
Sept 5 1986
Historical File