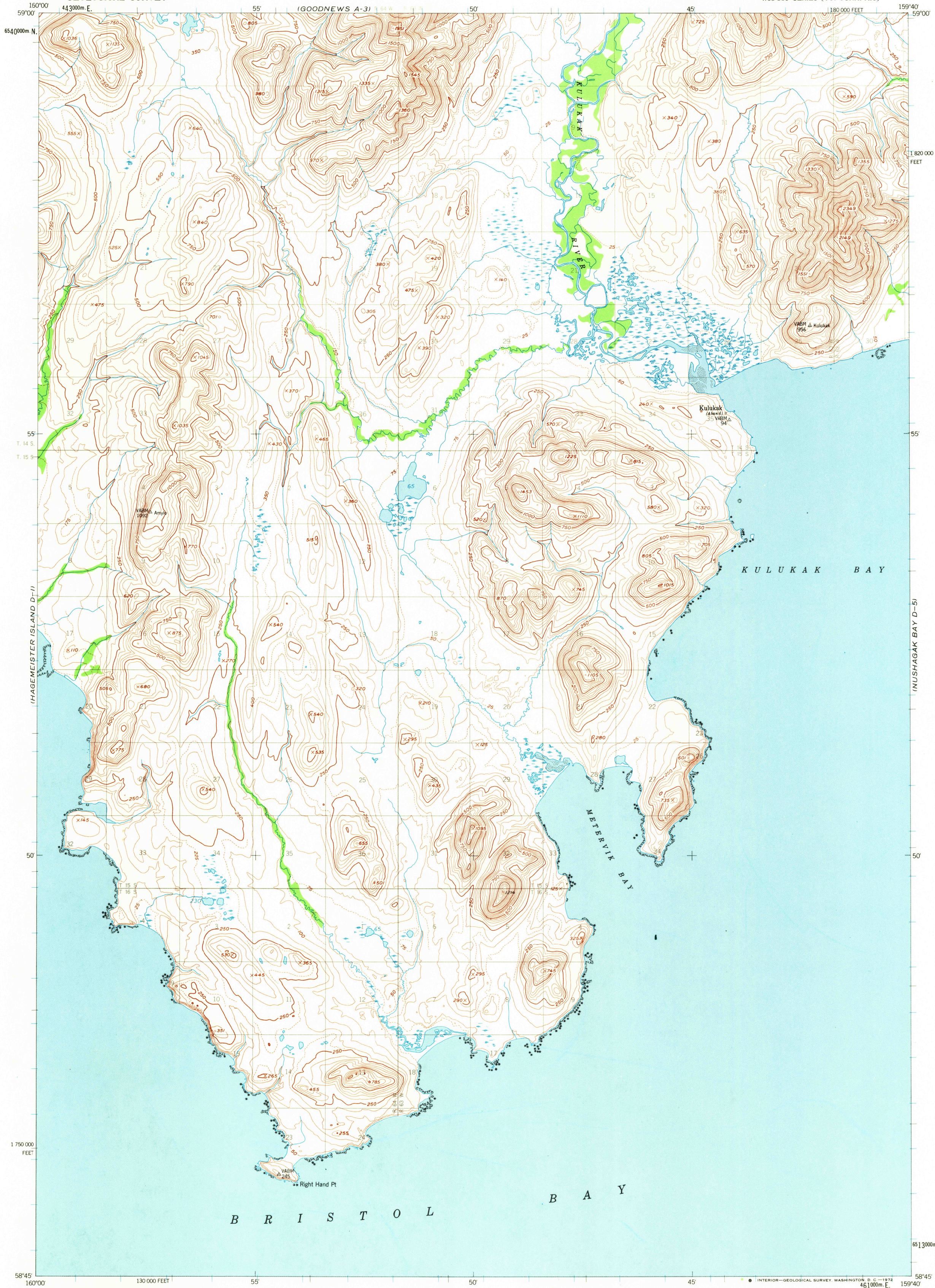


UNITED STATES
DEPARTMENT OF THE INTERIOR
GEOLOGICAL SURVEY

NUSHAGAK BAY (D-6) QUADRANGLE
ALASKA
1:63 360 SERIES (TOPOGRAPHIC)



Maped by the U.S. Coast and Geodetic Survey
Edited and published by the Geological Survey

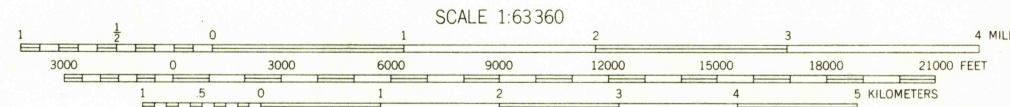
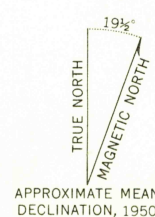
Control by USC&GS

Topography and inshore detail from USC&GS chart 8802
(1:1,023,188 scale) and from surveys T-9044 and
T-9054 as delineated by Reading plotter 1953

Aerial photographs taken 1946-1950. Map not field checked

Universal Transverse Mercator projection, 1927 North American datum
10,000-foot grid based on Alaska coordinate system, zone 6
1000-meter Universal Transverse Mercator grid ticks,
zone 4, shown in blue

Land lines represent unsurveyed and unmarked locations
predetermined by the Bureau of Land Management
Folio S-19, Seward Meridian



CONTOUR INTERVAL 50 FEET
DASHED LINES REPRESENT 25-FOOT CONTOURS
DATUM IS MEAN SEA LEVEL
SHORELINE SHOWN REPRESENTS THE APPROXIMATE LINE OF MEAN HIGH WATER
THE AVERAGE RANGE OF TIDE IS APPROXIMATELY 6 FEET



ROAD CLASSIFICATION
No roads or trails in this area

FOR SALE BY U.S. GEOLOGICAL SURVEY
FAIRBANKS, ALASKA 99701, DENVER, COLORADO 80225, OR WASHINGTON, D. C. 20242
A FOLDER DESCRIBING TOPOGRAPHIC MAPS AND SYMBOLS IS AVAILABLE ON REQUEST

NUSHAGAK BAY (D-6), ALASKA
N5845-W15940/15X20

1950
MINOR REVISIONS 1971

USGS
HISTORICAL FILE
TOPOGRAPHIC DIVISION

1775

SEP 21 1972