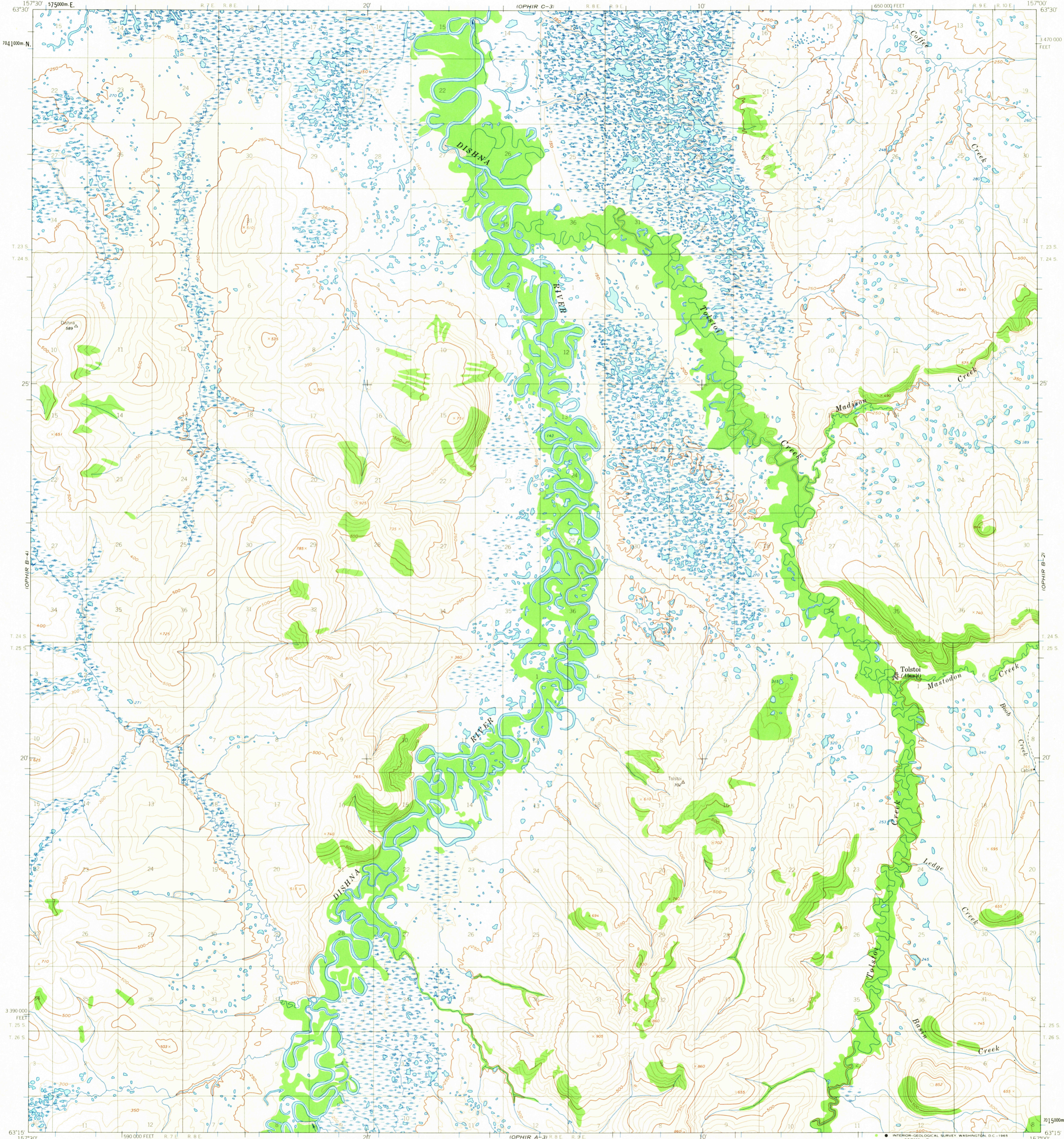


OPHIR C-4

OPHIR C-2

UNITED STATES  
DEPARTMENT OF THE INTERIOR  
GEOLOGICAL SURVEY

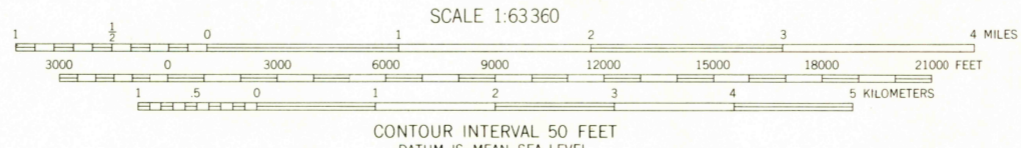
OPHIR (B-3) QUADRANGLE  
ALASKA  
1:63 360 SERIES (TOPOGRAPHIC)



OPHIR A-4

OPHIR A-2

Mapped, edited, and published by the Geological Survey  
Control by USC&GS  
Topography by photogrammetric methods from aerial photographs taken 1953, 1955 and 1957, field annotated 1954. Map not field checked  
Universal Transverse Mercator projection, 1927 North American datum  
10,000 foot grid based on Alaska coordinate system, zone 6  
1000 meter Universal Transverse Mercator grid ticks, zone 4, shown in blue  
Land lines represent unsurveyed and unmarked locations predetermined by the Bureau of Land Management  
FotoK18, Kateel River Meridian  
Swamps, as portrayed indicate only the wetter areas, usually of low relief, as interpreted from aerial photographs



USCS  
Historical File  
Topogra

U.S.G.S.  
FILE COPY  
TOPOGRAPHIC DIVISION

ROAD CLASSIFICATION  
Trails



FOR SALE BY U.S. GEOLOGICAL SURVEY  
FAIRBANKS, ALASKA, DENVER 25, COLORADO OR WASHINGTON 25, D. C.  
A FOLDER DESCRIBING TOPOGRAPHIC MAPS AND SYMBOLS IS AVAILABLE ON REQUEST

OPHIR (B-3), ALASKA  
N6315-W15700/15X30  
1954

JUL 27 1965

2165