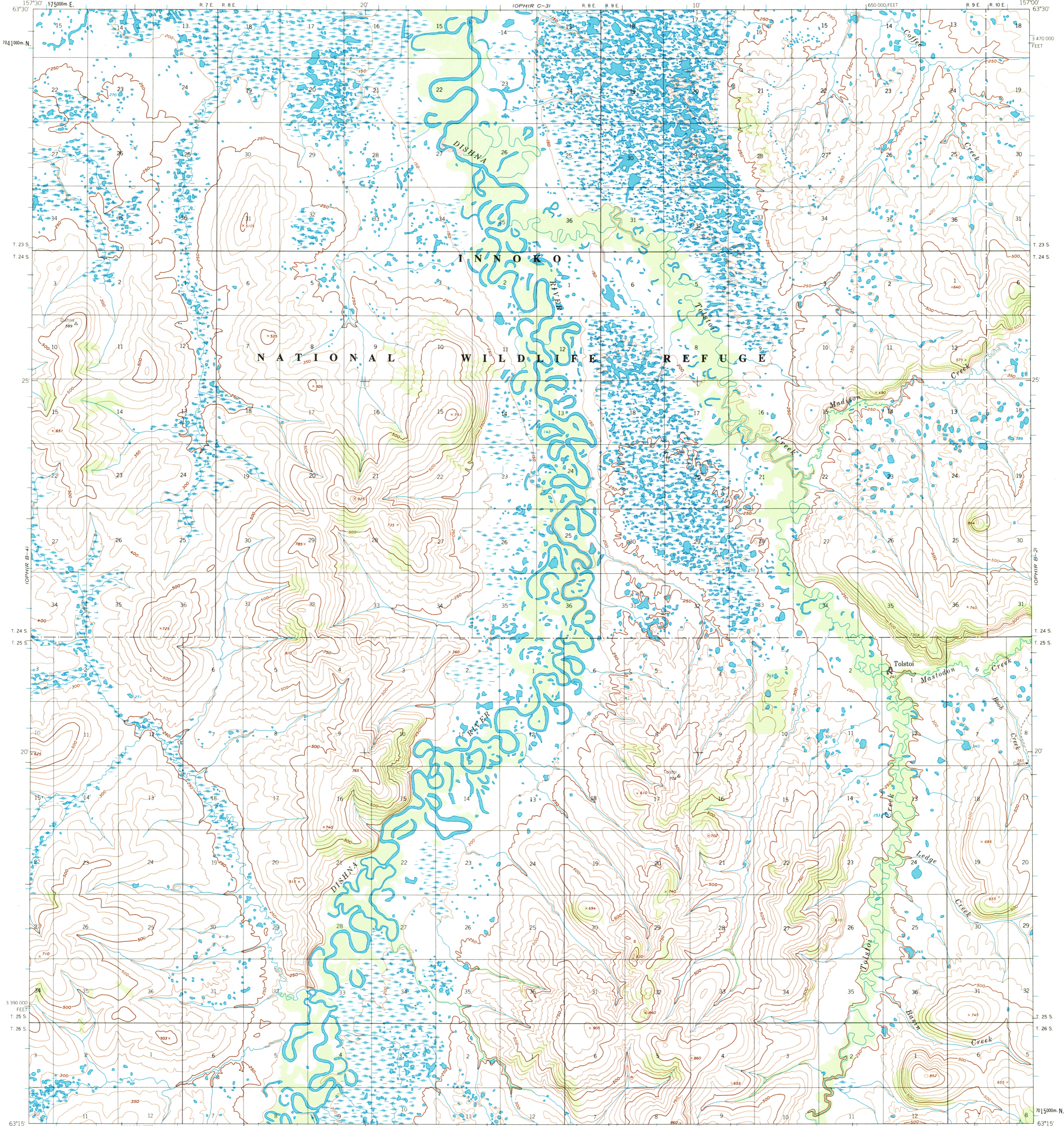


OPHIR C-4

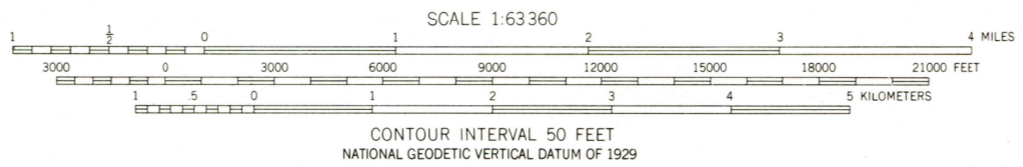
UNITED STATES  
DEPARTMENT OF THE INTERIOR  
GEOLOGICAL SURVEY

OPHIR (B-3) QUADRANGLE  
ALASKA  
1:63 360 SERIES (TOPOGRAPHIC)

OPHIR C-2



Mapped, edited, and published by the Geological Survey  
Control by NOS/NOAA  
Topography by photogrammetric methods from aerial photographs  
taken 1953, 1955 and 1957, field annotated 1954. Map not field checked  
Projection and 1,000-meter grid ticks shown in blue:  
Universal Transverse Mercator, zone 4  
10,000-foot grid ticks based on Alaska coordinated system, zone 6  
1927 North American datum. To place on the predicted North  
American Datum 1983 move the projection lines  
74 meters north and 125 meters east  
Gray land lines represent unsurveyed and unmarked locations  
predetermined by the Bureau of Land Management  
Folio K-18, Katali River Meridian  
Swamps, as portrayed, indicate only the wetter areas,  
usually of low relief, as interpreted from aerial photographs  
There may be private inholdings within the boundaries of  
the National or State reservations shown on this map



FOR SALE BY U. S. GEOLOGICAL SURVEY  
FAIRBANKS, ALASKA 99701, DENVER, COLORADO 80225, OR RESTON, VIRGINIA 22092  
A FOLDER DESCRIBING TOPOGRAPHIC MAPS AND SYMBOLS IS AVAILABLE ON REQUEST



ROAD CLASSIFICATION  
Trails

OPHIR (B-3), ALASKA  
NE 315 - W 15X30  
USGS AND HISTORICAL  
MAP ARCHIVES REVISIONS 1988  
MAR 18 1996  
REC'D FILE COPY

