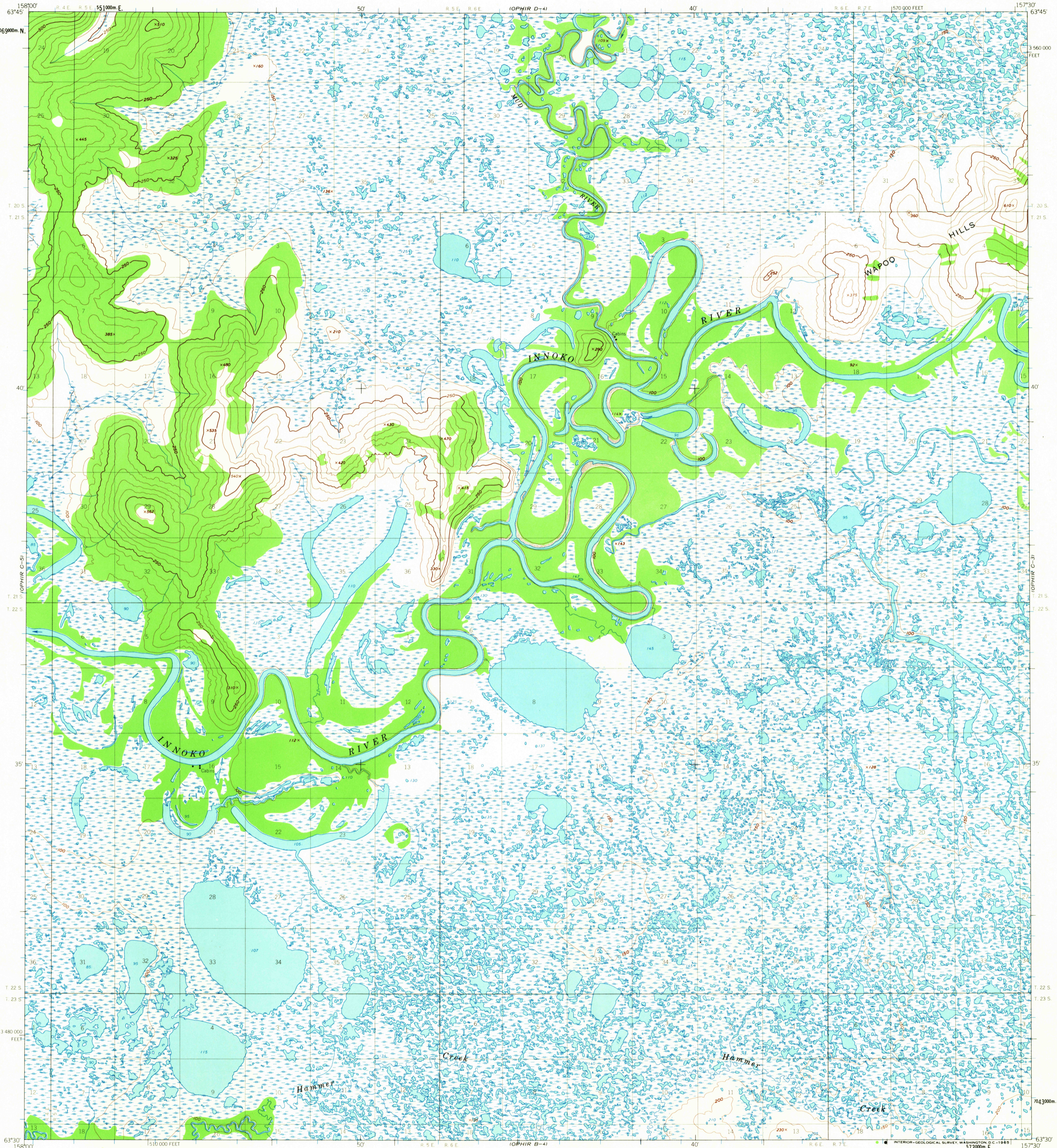


OPHIR D-5
OPHIR C-5
OPHIR B-5

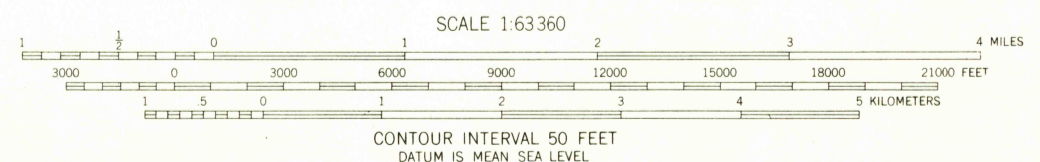
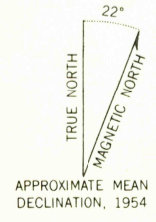
OPHIR D-4
OPHIR C-4
OPHIR B-4

UNITED STATES
DEPARTMENT OF THE INTERIOR
GEOLOGICAL SURVEY

OPHIR (C-4) QUADRANGLE
ALASKA
1:63 360 SERIES (TOPOGRAPHIC)



Mapped, edited, and published by the Geological Survey
Control by USC&GS
Topography by photogrammetric methods from aerial photographs
taken 1953 and 1955, field annotated 1954. Map not field checked
Universal Transverse Mercator projection, 1927 North American datum
10,000-foot grid based on Alaska coordinate system, zone 2
1000-meter Universal Transverse Mercator grid ticks,
zone 4, shown in blue
Land lines represent unsurveyed and unmarked locations
predetermined by the Bureau of Land Management
Folio K 18, Kateel River Meridian
Swamps, as portrayed indicate only the wetter areas,
usually of low relief, as interpreted from aerial photographs



CONTOUR INTERVAL 50 FEET
DATUM IS MEAN SEA LEVEL

FOR SALE BY U.S. GEOLOGICAL SURVEY
FAIRBANKS, ALASKA DENVER 25, COLORADO WASHINGTON 25, D. C.
A FOLDER DESCRIBING TOPOGRAPHIC MAPS AND SYMBOLS IS AVAILABLE ON REQUEST

USGS
Historical File
Topographic Division



U.S.G.S.
FILE COPY
TOPOGRAPHIC DIVISION

ROAD CLASSIFICATION
No roads or trails in this area

OPHIR (C-4), ALASKA
N6330-W15730/15X30
1954

JUN 16 1965
JUN 16 1965
1825