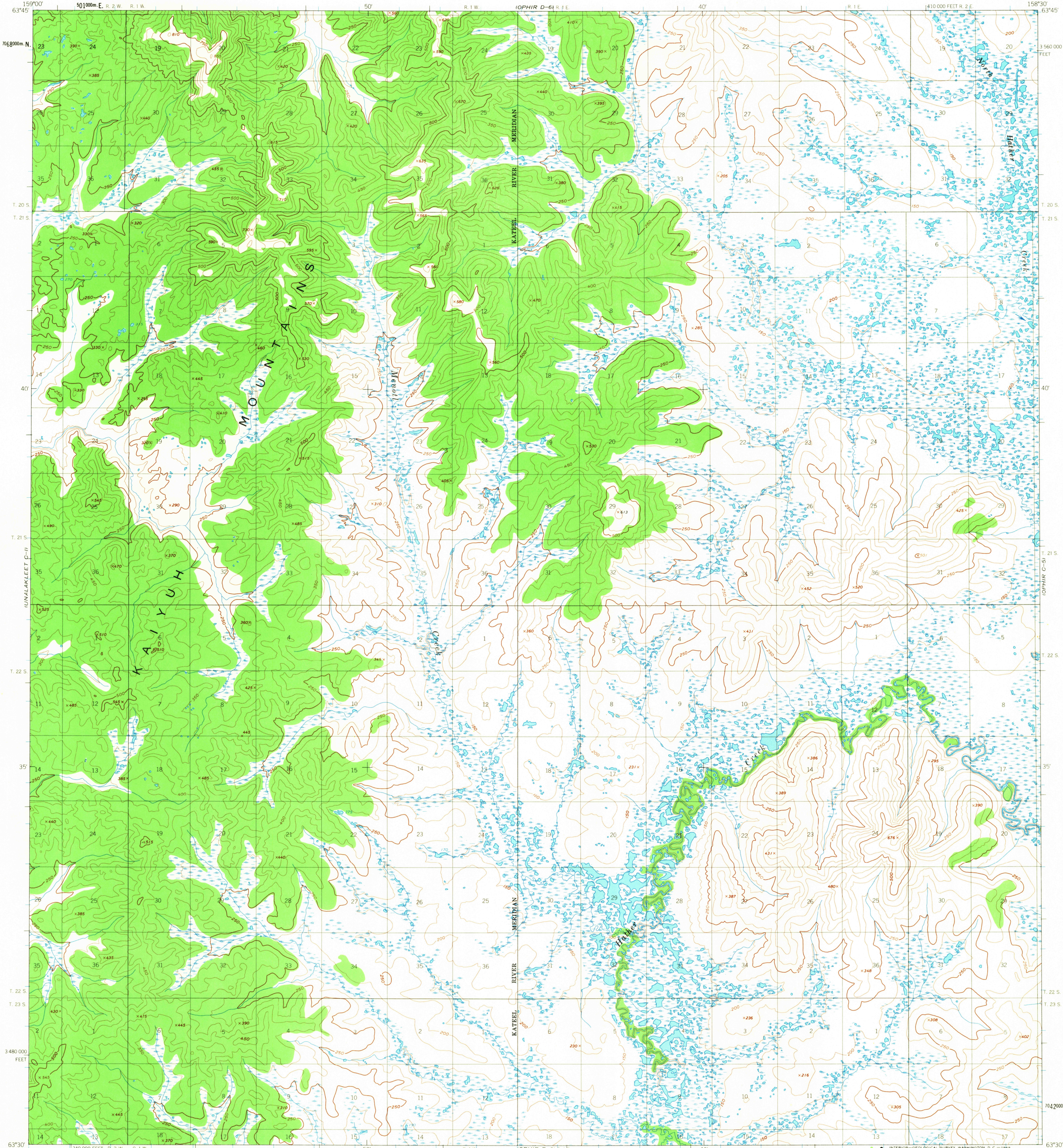


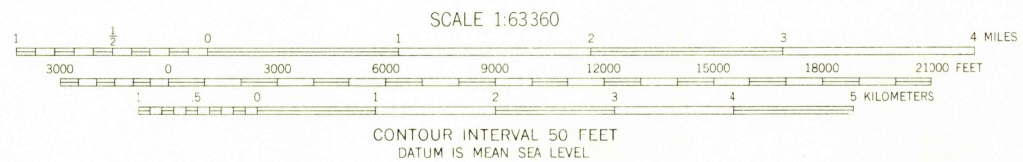
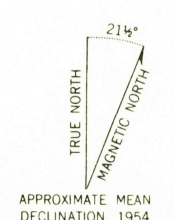
UNITED STATES
DEPARTMENT OF THE INTERIOR
GEOLOGICAL SURVEY

OPHIR (C-6) QUADRANGLE
ALASKA
1:63 360 SERIES (TOPOGRAPHIC)



UNALAKLEET D-11
UNALAKLEET B-11

Mapped, edited, and published by the Geological Survey
Control by USC&GS
Topography by photogrammetric methods from aerial photographs
taken 1953, field annotated 1954. Map not field checked
Universal Transverse Mercator projection, 1927 North American datum
10,000 foot grid based on Alaska coordinate system, zone 6
1000 meter Universal Transverse Mercator grid ticks,
zone 4, shown in blue
Land lines represent unsurveyed and unmarked locations
predetermined by the Bureau of Land Management
Folios K 17 and K 18, Kateel River Meridian
Swamps, as portrayed, indicate only the wetter areas,
usually of low relief, as interpreted from aerial photographs.



USGS
Historical File
Topographic Division

ROAD CLASSIFICATION
No roads or trails in this area

FOR SALE BY U.S. GEOLOGICAL SURVEY
FAIRBANKS, ALASKA, DENVER 25, COLORADO OR WASHINGTON 25, D.C.
A FOLDER DESCRIBING TOPOGRAPHIC MAPS AND SYMBOLS IS AVAILABLE ON REQUEST



U.S.G.S.
FILE COPY
TOPOGRAPHIC DIVISION

OPHIR (C-6), ALASKA
N6330-W15830/15X30

OCT 4 1965

1954