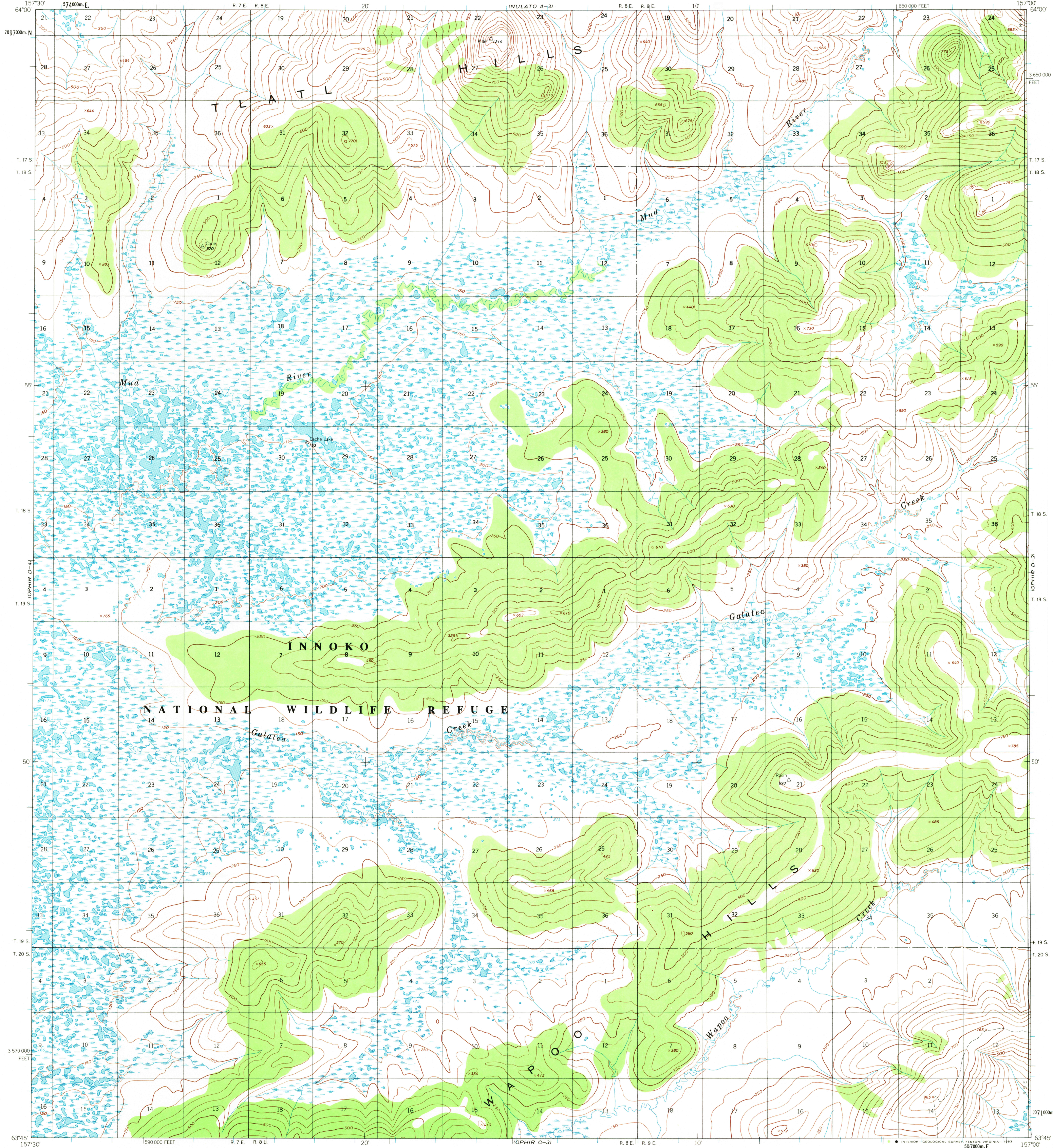
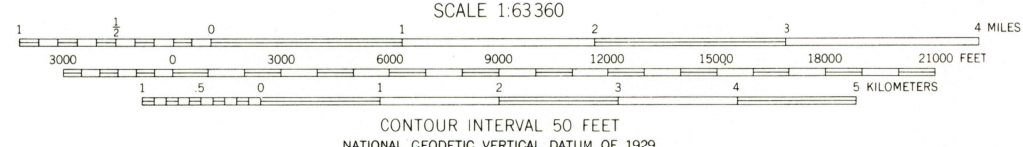
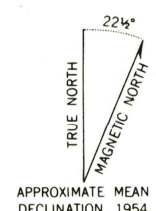


UNITED STATES
DEPARTMENT OF THE INTERIOR
GEOLOGICAL SURVEY

OPHIR (D-3) QUADRANGLE
ALASKA
1:63 360 SERIES (TOPOGRAPHIC)



Mapped, edited, and published by the Geological Survey
Control by NOS/NOAA
Topography by photogrammetric methods from aerial photographs taken 1953, 1955 and 1957, field annotated 1954. Map not field checked
Projection and 1,000-meter grid ticks shown in blue:
Universal Transverse Mercator, zone 4
10,000-foot grid ticks based on Alaska coordinated system, zone 6
1927 North American datum To place on the predicted North American Datum 1983 move the projection lines
74 meters north and 124 meters east
Gray land lines represent unsurveyed and unmarked locations predetermined by the Bureau of Land Management
Folios K-3 and K-7, Kateel River Meridian
Swamps, as portrayed, indicate only the wetter areas, usually of low relief, as interpreted from aerial photographs
There may be private inholdings within the boundaries of the National or State reservations shown on this map



FOR SALE BY U.S. GEOLOGICAL SURVEY
FAIRBANKS, ALASKA 99701, DENVER, COLORADO 80225, OR RESTON, VIRGINIA 22092
A FOLDER DESCRIBING TOPOGRAPHIC MAPS AND SYMBOLS IS AVAILABLE ON REQUEST



Federal reservations boundaries established by The Alaska National Interest Lands Conservation Act, PL 96-487, Dec. 2, 1980 are shown as compiled by the administering agencies on the Alaska boundaries map set

OPHIR (D-3), ALASKA
N6345-W15700/15X30
1954
MINOR REVISIONS 1983

RETURN TO:
NWD HISTORICAL MAP ARCHIVES
USGS NATIONAL CENTER, NS-522
RESTON, VA 20192

APR 13 1983

750