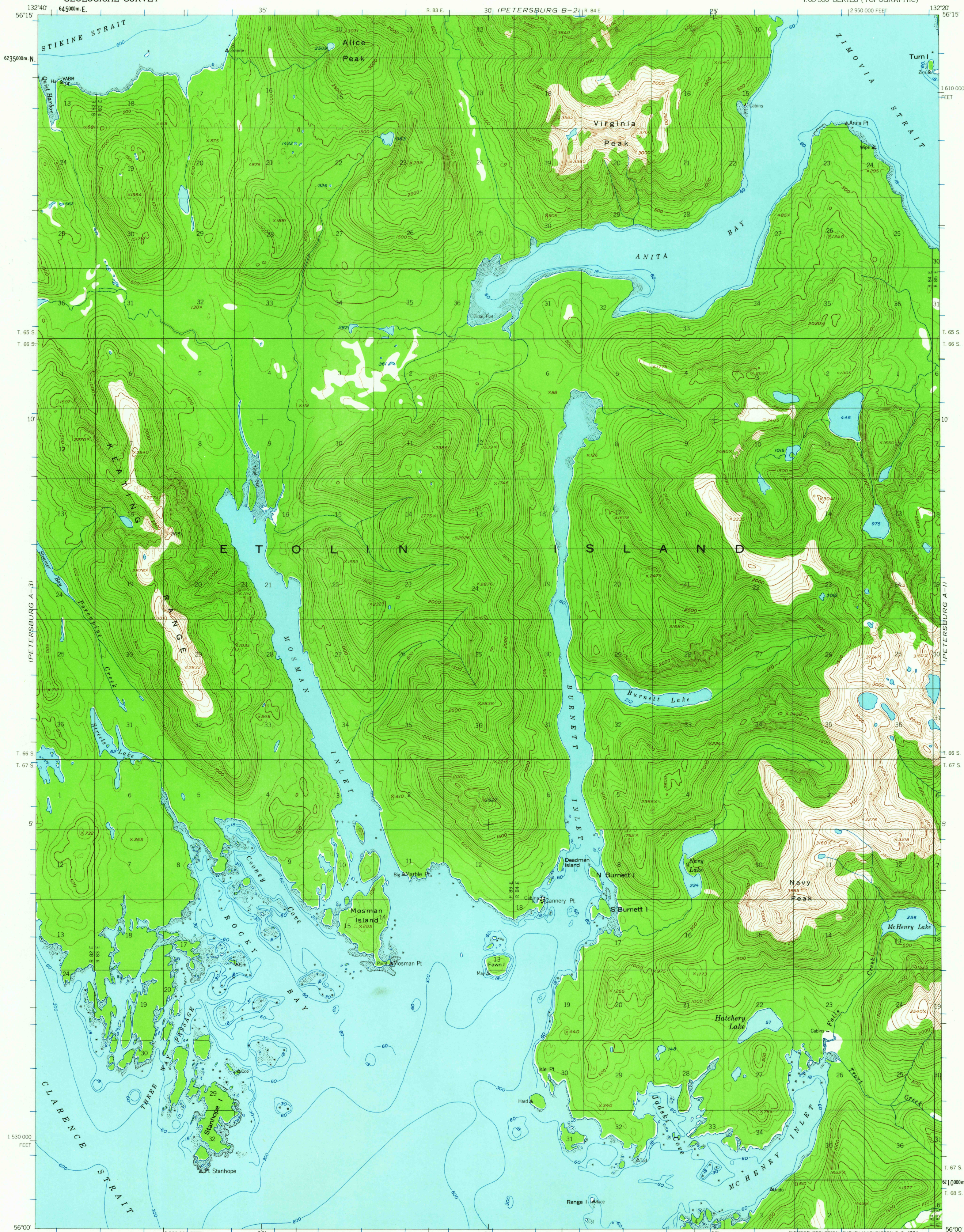
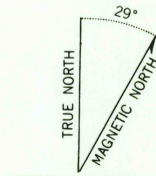


UNITED STATES  
DEPARTMENT OF THE INTERIOR  
GEOLOGICAL SURVEY

PETERSBURG (A-2) QUADRANGLE  
ALASKA  
1:63 360 SERIES (TOPOGRAPHIC)



Mapped, edited, and published by the Geological Survey  
Control by USGS and USC&GS  
Topography by photogrammetric methods from aerial photographs  
taken 1948, field annotated 1953. Map not field checked  
Selected hydrographic data compiled from USC&GS Charts 8120  
(1954), 8160 (1956), 8161 (1952), and from survey H-3941 (1910)  
This information is not intended for navigational purposes  
Universal Transverse Mercator projection, 1927 North American datum  
10,000-foot grid based on Alaska coordinate system, zone 1  
1000-meter Universal Transverse Mercator grid ticks,  
zone 8, shown in blue  
Land lines represent unsurveyed and unmarked locations  
predetermined by the State of Alaska, Division of Lands  
Copper River Meridian  
Entire land area is within the Tongass National Forest



SCALE 1:63 360  
CONTOUR INTERVAL 100 FEET  
DATUM IS MEAN SEA LEVEL  
DEPTH CURVES IN FEET-DATUM IS MEAN LOWER LOW WATER  
SHORELINE SHOWN REPRESENTS THE APPROXIMATE LINE OF MEAN HIGH WATER  
THE MEAN RANGE OF TIDE IS APPROXIMATELY 14 FEET  
FOR SALE BY U.S. GEOLOGICAL SURVEY  
FAIRBANKS, ALASKA DENVER 25, COLORADO WASHINGTON 25, D.C.  
A FOLDER DESCRIBING TOPOGRAPHIC MAPS AND SYMBOLS IS AVAILABLE ON REQUEST



USGS  
Historical File  
Topographic Division

ROAD CLASSIFICATION  
No roads or trails in this area

PETERSBURG (A-2), ALASKA  
N5600-W13220/15X20

1953  
MINOR REVISIONS 1963

MAY 25 1964