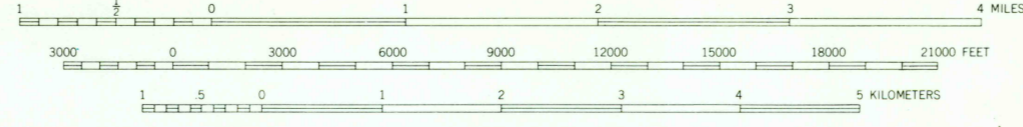
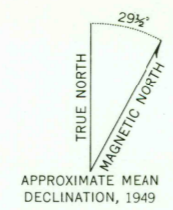




Mapped, edited, and published by the Geological Survey  
Control by USC&GS  
Topography by photogrammetric methods from aerial photographs  
taken 1948, field annotated 1949. Map not field checked  
Selected hydrographic data compiled from USC&GS Charts  
8160 (1952), 8168 (1952), and 8201 (1951), (1:217,828 scale)  
This information is not intended for navigational purposes  
Universal Transverse Mercator projection, 1927 North American datum  
10,000-foot grid based on Alaska coordinate system, zone 1  
1000-meter Universal Transverse Mercator grid ticks,  
zone B, shown in blue  
Land lines represent unsurveyed and unmarked locations  
predetermined by the State of Alaska, Division of Lands  
Copper River Meridian  
Entire land area is within the Tongass National Forest



CONTOUR INTERVAL 100 FEET  
DOTTED LINES REPRESENT 50 FOOT CONTOURS  
DATUM IS MEAN SEA LEVEL  
DEPTH CURVES IN FEET DATUM IS MEAN LOWER LOW WATER  
SHORELINE SHOWN REPRESENTS THE APPROXIMATE LINE OF MEAN HIGH WATER  
THE AVERAGE RANGE OF TIDE IS APPROXIMATELY 12 FEET



PETERSBURG (B-4), ALASKA  
N5615-W13300/15X20  
1949  
MINOR REVISIONS 1964

FOR SALE BY U. S. GEOLOGICAL SURVEY  
FAIRBANKS, ALASKA 99701, DENVER, COLORADO 80225 OR WASHINGTON, D. C. 20242  
A FOLDER DESCRIBING TOPOGRAPHIC MAPS AND SYMBOLS IS AVAILABLE ON REQUEST

USGS  
HISTORICAL FILE  
TOPOGRAPHIC DIVISION

2100  
DEC 20 1972