

Mapped, edited, and published by the Geological Survey

Control by USGS and US&GS

Topography by photogrammetric methods from aerial photographs taken 1948, field annotated 1953. Map not field checked

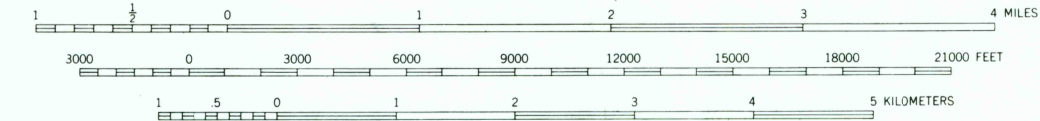
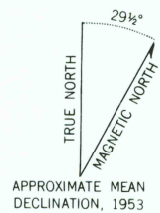
Selected hydrographic data compiled from US&GS Charts 8161 and 8201 (1:217 828 scale), 1952-1954. This information is not intended for navigational purposes

Universal Transverse Mercator projection, 1927 North American datum 10,000-foot grid based on Alaska coordinate system, zone 1 1000-meter Universal Transverse Mercator grid ticks, zone 8, shown in blue

Land lines printed in gray represent unsurveyed and unmarked locations predetermined by the State of Alaska, Division of Lands, Copper River Meridian

Swamps, as portrayed, indicate only the wetter areas, usually of low relief, as interpreted from aerial photographs. Entire land area is within the Tongass National Forest

To place on the predicted North American Datum 1983 move the projection lines 38 meters north and 102 meters east



CONTOUR INTERVAL 100 FEET
NATIONAL GEODETIC VERTICAL DATUM OF 1929
DEPTH CURVES IN FEET-DATUM IS MEAN LOWER LOW WATER
SHORELINE SHOWN REPRESENTS THE APPROXIMATE LINE OF MEAN HIGH WATER
THE MEAN RANGE OF TIDE IS APPROXIMATELY 12 FEET IN STIKINE RIVER
AND 14 FEET IN EASTERN PASSAGE

FOR SALE BY U. S. GEOLOGICAL SURVEY
FAIRBANKS, ALASKA 99701. DENVER, COLORADO 80225. OR RESTON, VIRGINIA 22092
A FOLDER DESCRIBING TOPOGRAPHIC MAPS AND SYMBOLS IS AVAILABLE ON REQUEST



PETERSBURG (C-1), ALASKA
N5630-W13200/15x20

1953
MINOR REVISIONS 1980

There may be private inholdings within the boundaries of the National or State reservations shown on this map

RETURN TO:
NHD HISTORICAL MAP ARCHIVES
USGS NATIONAL CENTER, MS-522
RESTON, VA 22092