

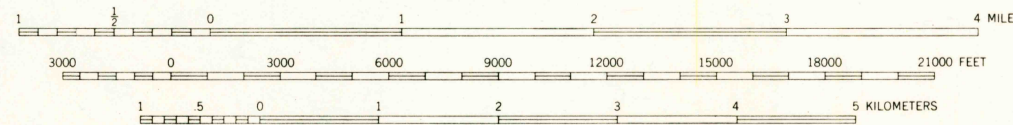
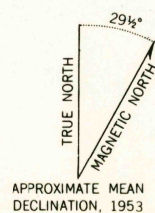
Mapped, edited, and published by the Geological Survey

Control by USGS and USC&GS  
Topography by photogrammetric methods from aerial photographs taken 1948, field annotated 1953. Map not field checked  
Selected hydrographic data compiled from USC&GS Charts 8160 (1952), 8170 (1951), and 8201 (1:217,828 scale) 1957  
This information is not intended for navigational purposes

Universal Transverse Mercator projection, 1927 North American datum  
10,000-foot grid based on Alaska coordinate system, zone 1  
1000-meter Universal Transverse Mercator grid ticks, zone 8, shown in blue

Land lines printed in gray represent unsurveyed and unmarked locations predetermined by the State of Alaska, Division of Lands  
Copper River Meridian

Entire land area is within the Tongass National Forest except the Petersburg exclusion area



CONTOUR INTERVAL 100 FEET  
DATUM IS MEAN SEA LEVEL  
DEPTH CURVES IN FEET - DATUM IS MEAN LOWER LOW WATER  
SHORELINE SHOWN REPRESENTS THE APPROXIMATE LINE OF MEAN HIGH WATER  
THE MEAN RANGE OF TIDE IS APPROXIMATELY 13 FEET

FOR SALE BY U.S. GEOLOGICAL SURVEY  
FAIRBANKS, ALASKA DENVER 25, COLORADO WASHINGTON 25, D.C.  
A FOLDER DESCRIBING TOPOGRAPHIC MAPS AND SYMBOLS IS AVAILABLE ON REQUEST

ROAD CLASSIFICATION  
Light-duty ——— Unimproved dirt - - - - -



PETERSBURG (C-3), ALASKA  
N5630-W13240/15X20

1953  
MINOR REVISIONS 1963

U.S.G.S.  
FILE COPY  
TOPOGRAPHIC DIVISION

2520

JUN 9 1964

(PETERSBURG D-4)

(PETERSBURG D-2)

(PETERSBURG B-4)

(PETERSBURG B-2)