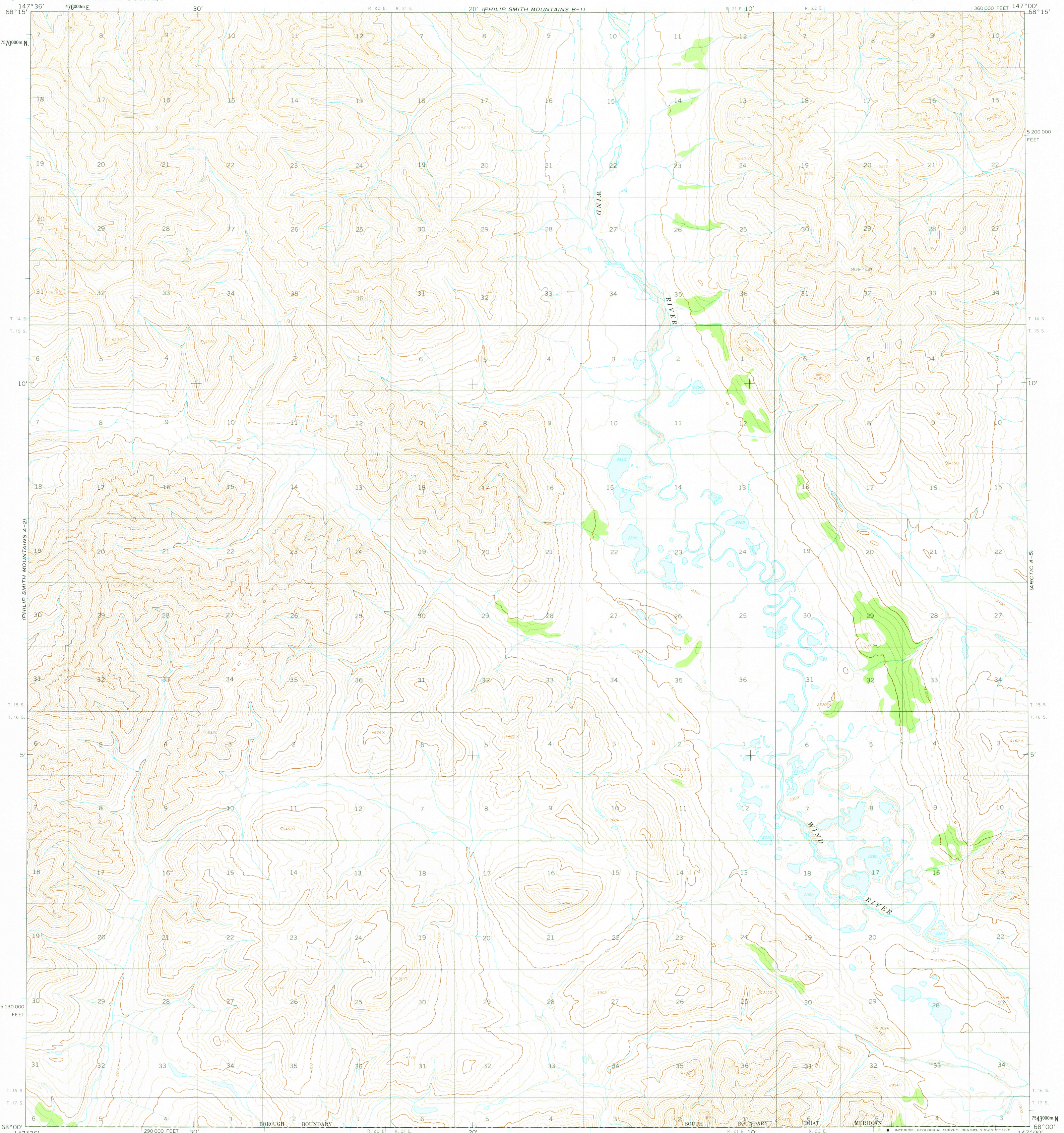


PHILIP SMITH MOUNTAINS B-2

UNITED STATES DEPARTMENT OF THE INTERIOR GEOLOGICAL SURVEY

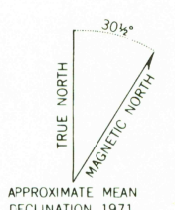
PHILIP SMITH MOUNTAINS (A-1) QUADRANGLE ALASKA-NORTH SLOPE BOROUGH 1:63 360 SERIES (TOPOGRAPHIC)

ARCTIC B-9



Mapped, edited, and published by the Geological Survey

Control by USGS and USC&GS  
Topography by photogrammetric methods from aerial photographs taken 1970, field annotated 1971. Map not field checked  
Projection and 1000-meter grid ticks: Universal Transverse Mercator, zone 6  
10,000-foot grid ticks based on Alaska coordinate system, zone 3. 1927 North American datum  
Land lines represent unsurveyed and unmarked locations predetermined by the Bureau of Land Management Folio U-12, Umiat Meridian  
Swamps as portrayed, indicate only the wetter areas, usually of low relief, as interpreted from aerial photographs



FOR SALE BY U. S. GEOLOGICAL SURVEY  
FAIRBANKS, ALASKA 99701, DENVER, COLORADO 80225, OR RESTON, VIRGINIA 22092  
A FOLDER DESCRIBING TOPOGRAPHIC MAPS AND SYMBOLS IS AVAILABLE ON REQUEST

ROAD CLASSIFICATION  
No roads or trails in this area  
MAR 21 1975

PHILIP SMITH MOUNTAINS (A-1), ALASKA  
N6800-W14700/15 X 36

1971

USGS  
Historical File  
Topographic Division

3665