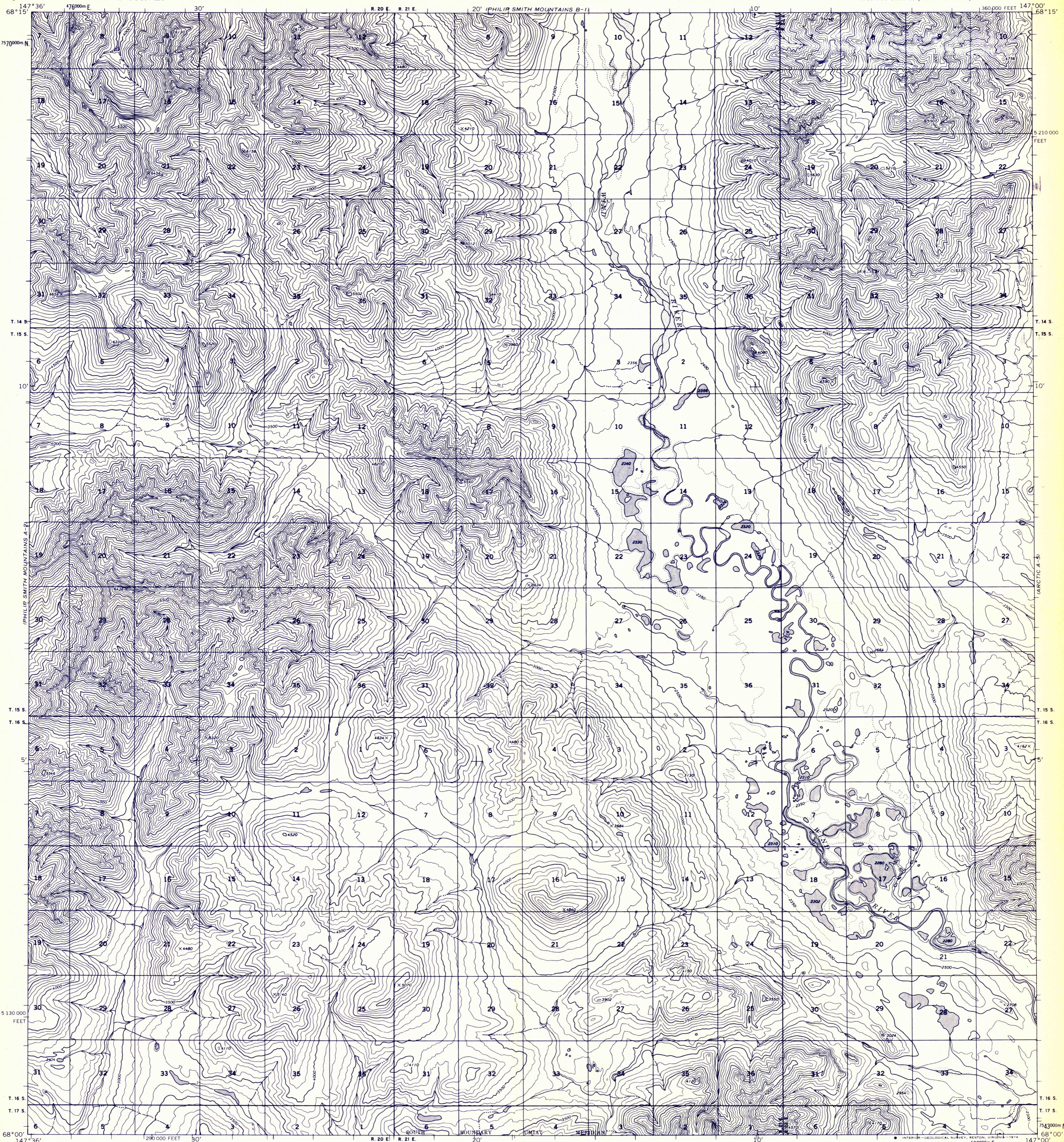


UNITED STATES
DEPARTMENT OF THE INTERIOR
GEOLOGICAL SURVEY

ADVANCE PROOF
SUBJECT TO CORRECTION
SCALE 1:63,360
F

PHILIP SMITH MOUNTAINS (A-1) QUADRANGLE
ALASKA
1:63 360 SERIES (TOPOGRAPHIC)



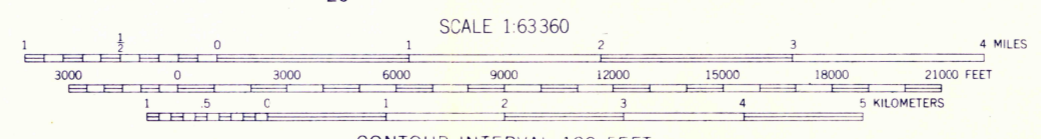
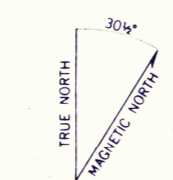
Mapped, edited, and published by the Geological Survey
Control by USGS and USC&GS

Topography by photogrammetric methods from aerial photographs
taken 1970, field annotated 1971. Map not field checked

Projection and 1000-meter grid ticks: Universal
Transverse Mercator, zone 6
10,000-foot grid ticks based on Alaska coordinate
system, zone 3. 1927 North American datum

Land lines represent unsurveyed and unmarked locations
predetermined by the Bureau of Land Management
Folio U-12. Umiat Meridian

Swamps as portrayed, indicate only the wetter areas,
usually of low relief, as interpreted from aerial photographs



CONTOUR INTERVAL 100 FEET
DOTTED LINES REPRESENT 50-FOOT CONTOURS
DATUM IS MEAN SEA LEVEL



ROAD CLASSIFICATION
No roads or trails in this area

FOR SALE BY U. S. GEOLOGICAL SURVEY
FAIRBANKS, ALASKA 99701, DENVER, COLORADO 80225, OR RESTON, VIRGINIA 22092
A FOLDER DESCRIBING TOPOGRAPHIC MAPS AND SYMBOLS IS AVAILABLE ON REQUEST

PHILIP SMITH MOUNTAINS (A-1), ALASKA
N6800—W14700/15 X 36

1971

NOTE

CHIEF

Philip Smith Mountains
2016
JD 0-7
(D)