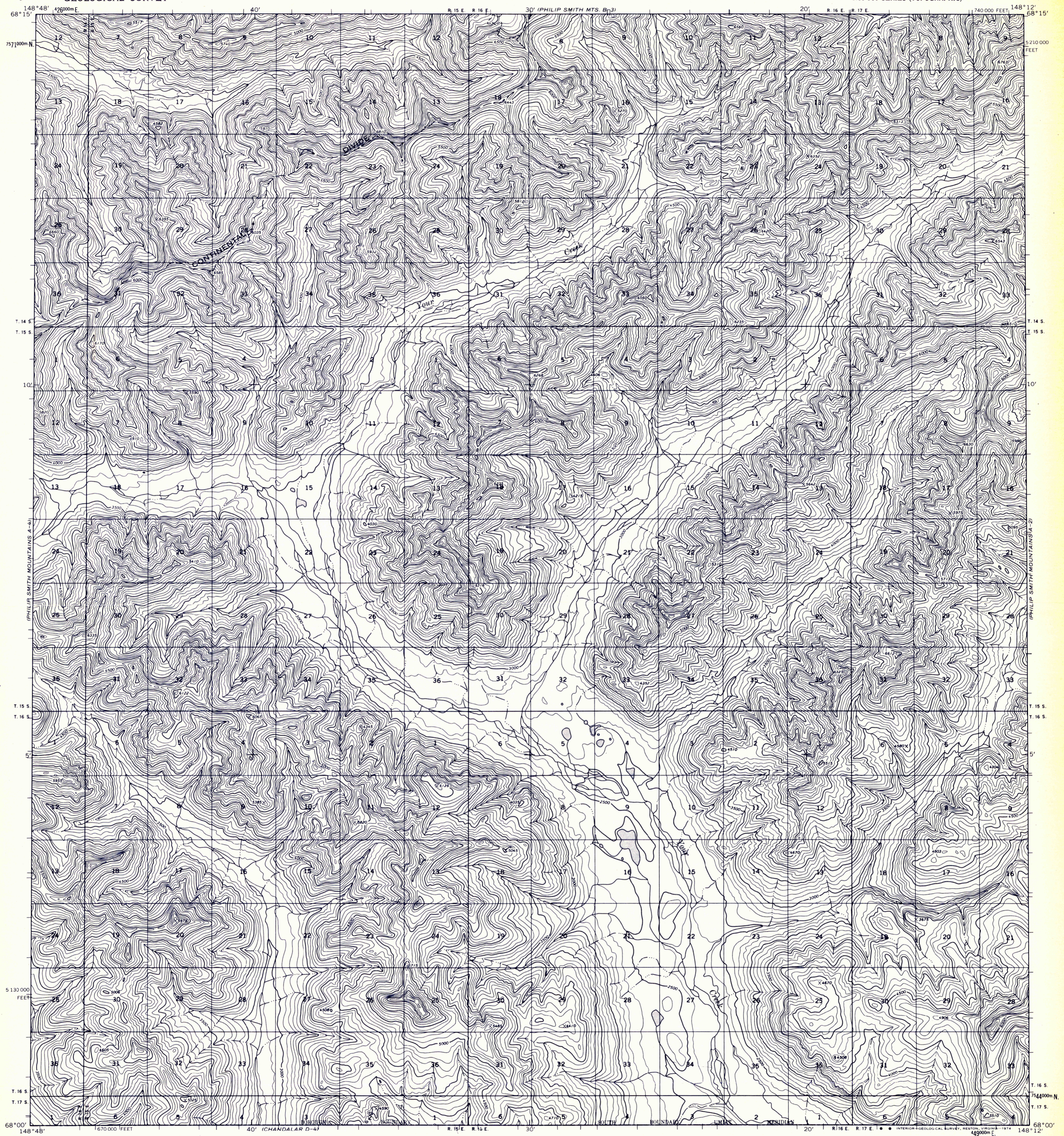
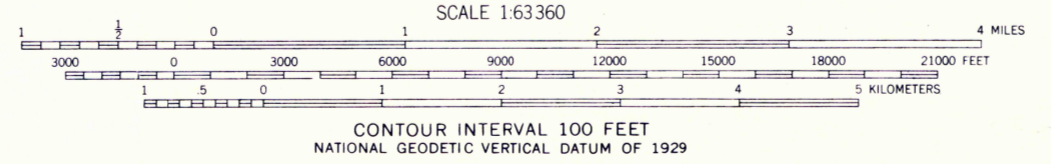
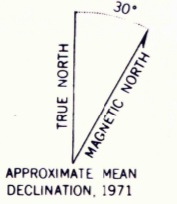


SUBJECT TO CORRECTION
SCALE 1:63,360

F



Mapped, edited, and published by the Geological Survey
Control by USGS and USC&GS
Topography by photogrammetric methods from aerial photographs
taken 1970, field annotated 1971. Map not field checked
Projection and 1000-meter grid ticks: Universal
Transverse Mercator, zone 4
10,000-foot grid ticks based on Alaska coordinate
system, zone 6. 1927 North American datum
Land lines represent unsurveyed and unmarked locations
predetermined by the Bureau of Land Management
Folios U-11 and U-12, Umat Meridian



ROAD CLASSIFICATION
No roads or trails in this area



FOR SALE BY U.S. GEOLOGICAL SURVEY
FAIRBANKS, ALASKA 99701, DENVER, COLORADO 80225, OR RESTON, VIRGINIA 22092
A FOLDER DESCRIBING TOPOGRAPHIC MAPS AND SYMBOLS IS AVAILABLE ON REQUEST

PHILIP SMITH MOUNTAINS (A-3), ALASKA
N6800—W14812/15 X 36

1971

Philip Smith Mts.
Alaska 2916-20
JG Liz
B-14
(D)

NOTE