

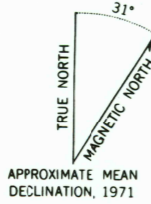


Mapped, edited, and published by the Geological Survey
Control by USGS and USC&GS

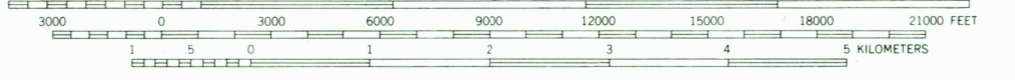
Topography by photogrammetric methods from aerial photographs
taken 1970, field annotated 1971. Map not field checked

Projection and 1000-meter grid ticks: Universal
Transverse Mercator, zone 6
10,000-foot grid ticks based on Alaska coordinate
system, zone 3. 1927 North American datum

Land lines represent unsurveyed and unmarked locations
preetermined by the Bureau of Land Management
Folio U-12, Umiat Meridian



SCALE 1:63 360



CONTOUR INTERVAL 100 FEET
DATUM IS MEAN SEA LEVEL

ROAD CLASSIFICATION
No roads or trails in this area



PHILIP SMITH MOUNTAINS (C-1), ALASKA
N6830—W14700/15 X 36

1971

FOR SALE BY U. S. GEOLOGICAL SURVEY
FAIRBANKS, ALASKA 99701, DENVER, COLORADO 80225, OR RESTON, VIRGINIA 22092
A FOLDER DESCRIBING TOPOGRAPHIC MAPS AND SYMBOLS IS AVAILABLE ON REQUEST

