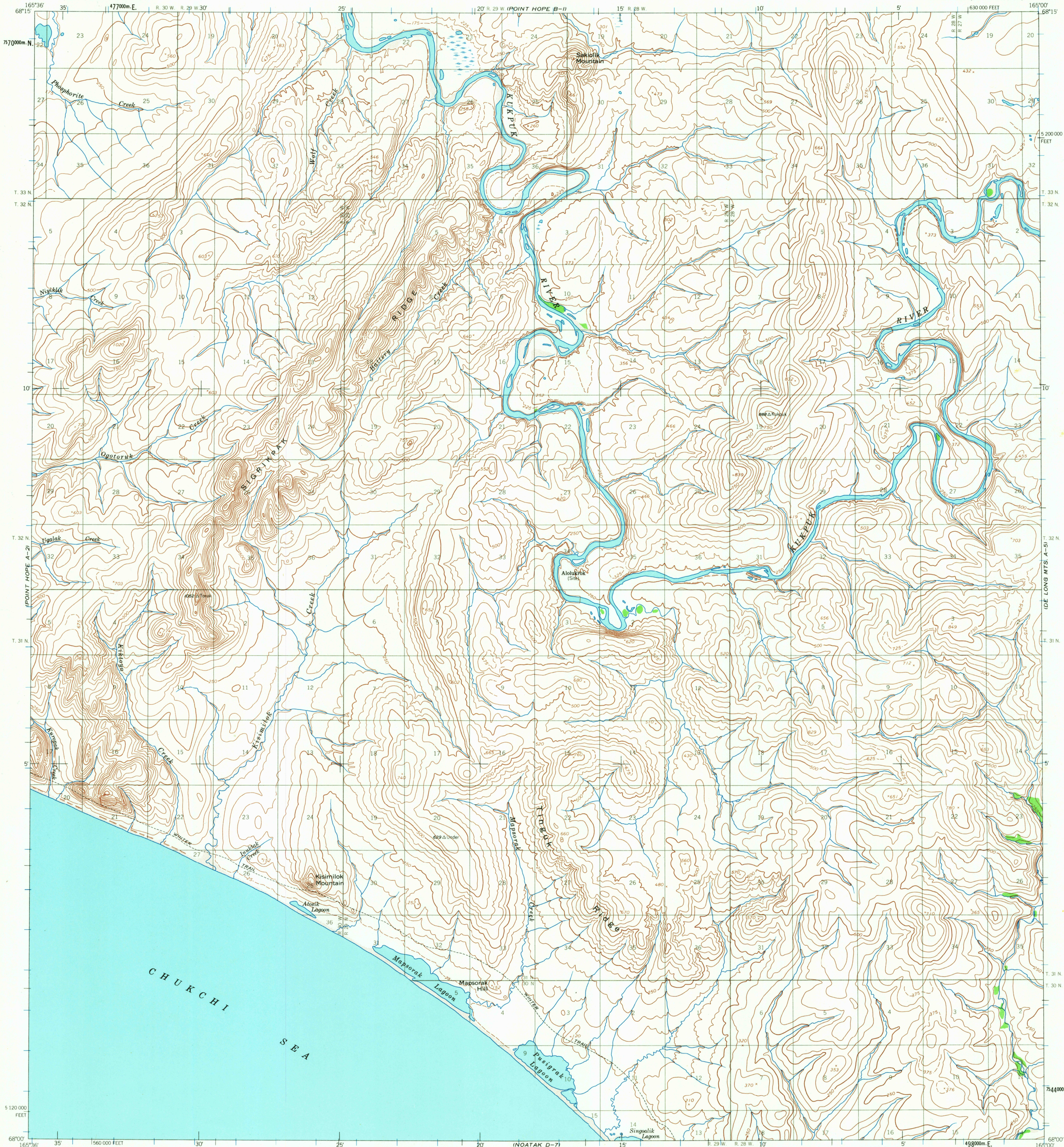


POINT HOPE B-2

UNITED STATES
DEPARTMENT OF THE INTERIOR
GEOLOGICAL SURVEY

POINT HOPE (A-1) QUADRANGLE
ALASKA
1:63 360 SERIES (TOPOGRAPHIC)

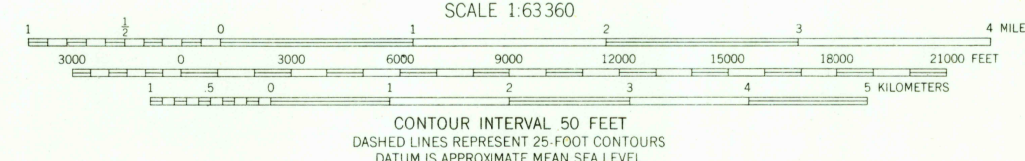
IDE LONG MTS. B-5



Maped by the Army Map Service
Edited and published by the Geological Survey
Control by USC&GS and USCE

Topography by photogrammetric methods from aerial photographs
taken 1952, field annotated 1955. Map not field checked
Universal Transverse Mercator projection. 1927 North American datum
10,000 foot grid based on Alaska coordinate system, zone 8
1000-meter Universal Transverse Mercator grid ticks,
zone 3, shown in blue
Land lines represent unsurveyed and unmarked locations
predetermined by the Bureau of Land Management
Folio K 4, Kattel River Meridian

TRUE NORTH
MAGNETIC NORTH
APPROXIMATE MEAN
DECLINATION, 1955



FOR SALE BY U. S. GEOLOGICAL SURVEY
FAIRBANKS, ALASKA 99701, DENVER, COLORADO 80225, OR WASHINGTON, D. C. 20242
A FOLDER DESCRIBING TOPOGRAPHIC MAPS AND SYMBOLS IS AVAILABLE ON REQUEST

USGS
Historical File
Topographic Division

ROAD CLASSIFICATION
Trails



POINT HOPE (A-1), ALASKA
N6800 - W16500/15X36

1955

FILE COPY
TOPOGRAPHIC DIVISION

2155
NOV 2 1966