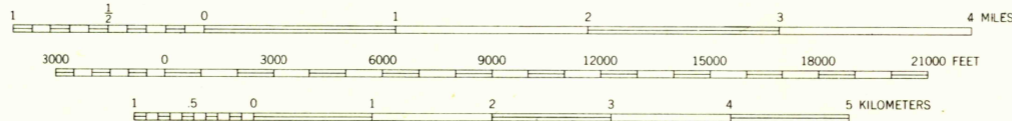
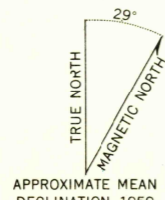


Mapped, edited, and published by the Geological Survey
Control by USGS and USC&GS
Topography from aerial photographs by photogrammetric methods 1956. Aerial photographs taken 1948, field annotated 1951. Map not field checked
Hydrography compiled from USC&GS charts 8253, 8261, 8263, and 8265 (1948-1952)
Universal Transverse Mercator projection
1927 North American datum
1000 meter Universal Transverse Mercator grid ticks, zone 8, shown in blue
Entire land area is within the Tongass National Forest
Unchecked elevations are shown in brown and blue



CONTOUR INTERVAL 100 FEET
DATUM IS MEAN SEA LEVEL
DEPTH CURVES IN FEET - DATUM IS MEAN LOWER LOW WATER
SHORELINE SHOWN REPRESENTS THE APPROXIMATE LINE OF MEAN HIGH WATER
THE MEAN RANGE OF TIDE IS APPROXIMATELY 8 FEET

FOR SALE BY U.S. GEOLOGICAL SURVEY
FAIRBANKS, ALASKA DENVER 2, COLORADO WASHINGTON 25, D. C.
A FOLDER DESCRIBING TOPOGRAPHIC MAPS AND SYMBOLS IS AVAILABLE ON REQUEST

USGS
Historical File
Topographic Division

U.S.G.S.
FILE COPY
TOPOGRAPHIC DIVISION

ROAD CLASSIFICATION
Trails - - - - -

PORT ALEXANDER (B-3 AND B-4), ALASKA
N5615-W13440/15X22.5
1951

QUADRANGLE LOCATION

PORT ALEXANDER C-1
PORT ALEXANDER C-2
PORT ALEXANDER C-3
PORT ALEXANDER C-4
MAR 27 1959
1920