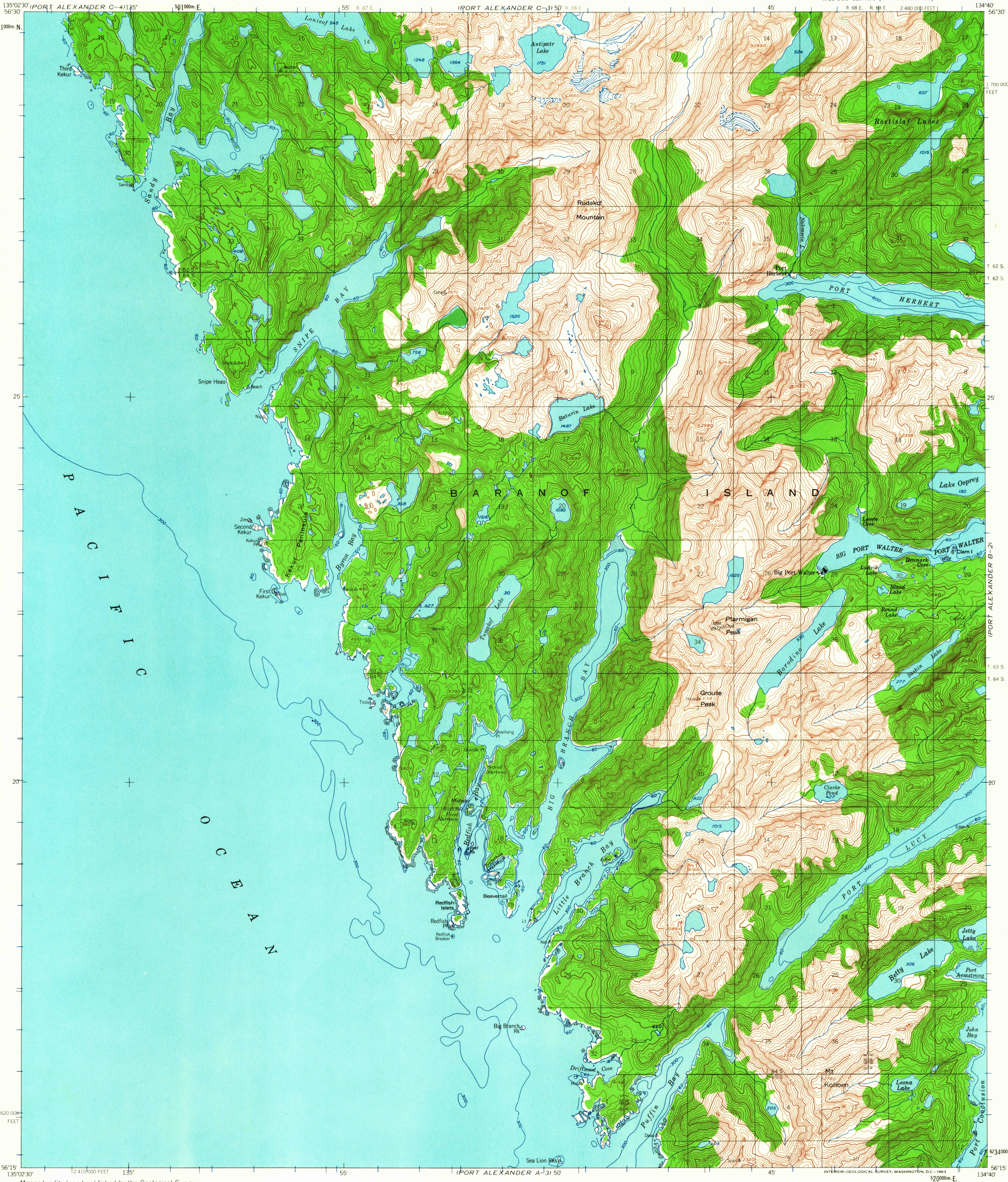


UNITED STATES
DEPARTMENT OF THE INTERIOR
GEOLOGICAL SURVEY

PORT ALEXANDER (B-3 AND B-4) QUADRANGLE
ALASKA
1:63 360 SERIES (TOPOGRAPHIC)



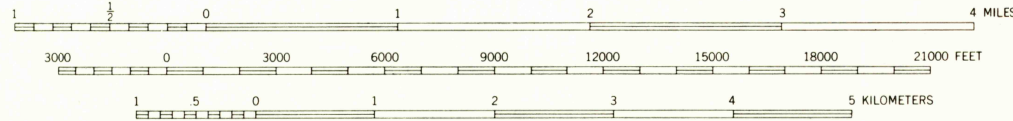
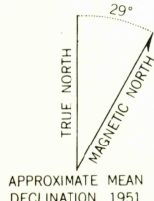
Mapped, edited, and published by the Geological Survey
Control by USGS and USC&GS

Topography by photogrammetric methods from aerial photographs
taken 1948, field annotated 1951. Map not field checked
Selected hydrographic data compiled from USC&GS
Charts 8253, 8261, 8263, and 8265 (1948-1952)
This information is not intended for navigational purposes

Universal Transverse Mercator projection, 1927 North American Datum
10,000-foot grid based on Alaska coordinate system, zone 1
1000-meter Universal Transverse Mercator grid ticks,
zone 8, shown in blue

Land lines represent unsurveyed and unmarked locations
predetermined by the State of Alaska, Division of Lands
Copper River Meridian

Entire land area is within the Tongass National Forest



CONTOUR INTERVAL 100 FEET
DATUM IS MEAN SEA LEVEL
DEPTH CURVES IN FEET—DATUM IS MEAN LOWER LOW WATER
SHORELINE SHOWN REPRESENTS THE APPROXIMATE LINE OF MEAN HIGH WATER
THE MEAN RANGE OF TIDE IS APPROXIMATELY 6 FEET

FOR SALE BY U.S. GEOLOGICAL SURVEY
FAIRBANKS, ALASKA DENVER 25, COLORADO WASHINGTON 25, D.C.
A FOLDER DESCRIBING TOPOGRAPHIC MAPS AND SYMBOLS IS AVAILABLE ON REQUEST



USGS
Historical File
Topographic Division

ROAD CLASSIFICATION
Trails

PORT ALEXANDER (B-3 AND B-4), ALASKA
N5615—W13440/15X22.5

1951
MINOR REVISIONS 1963

APR 20 1964