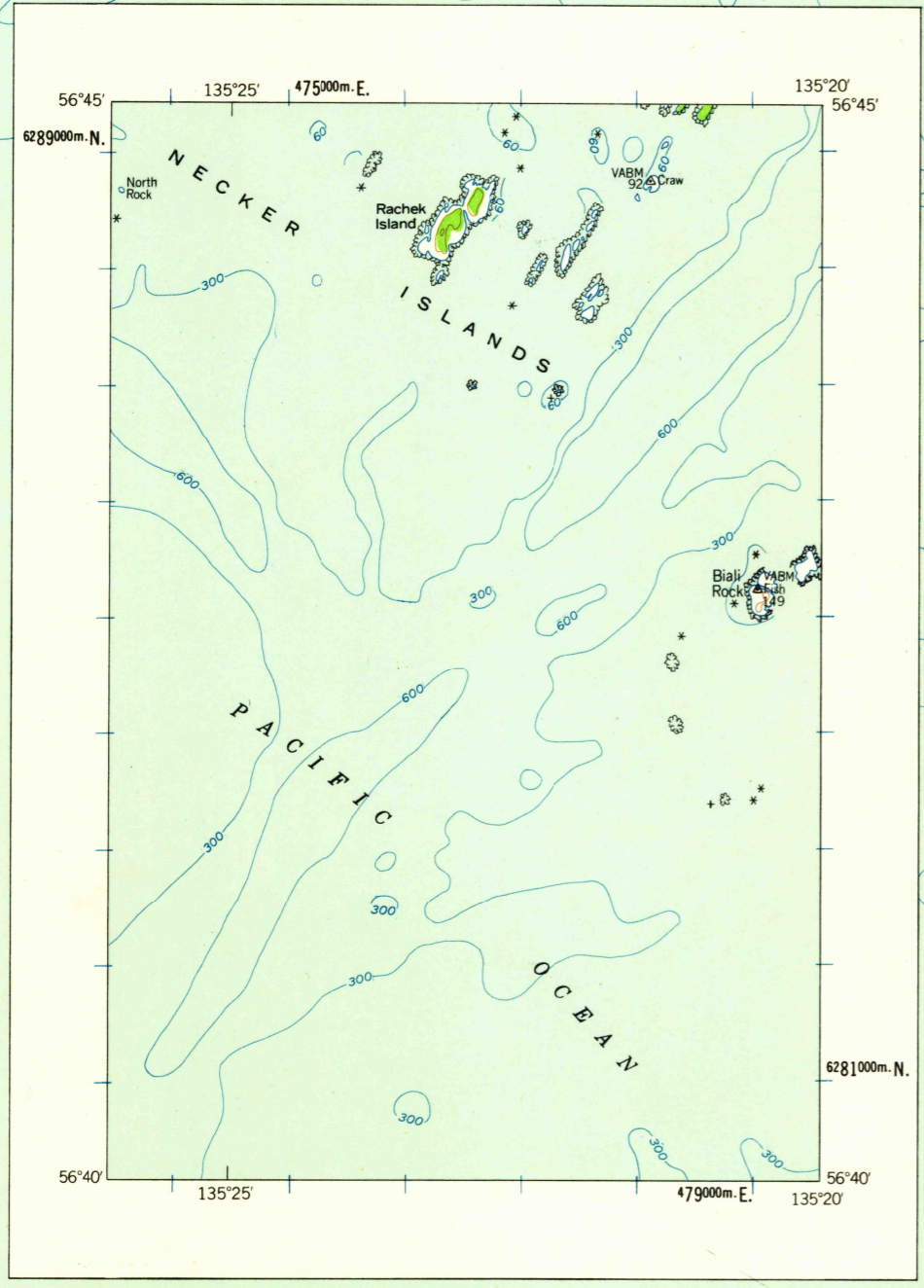
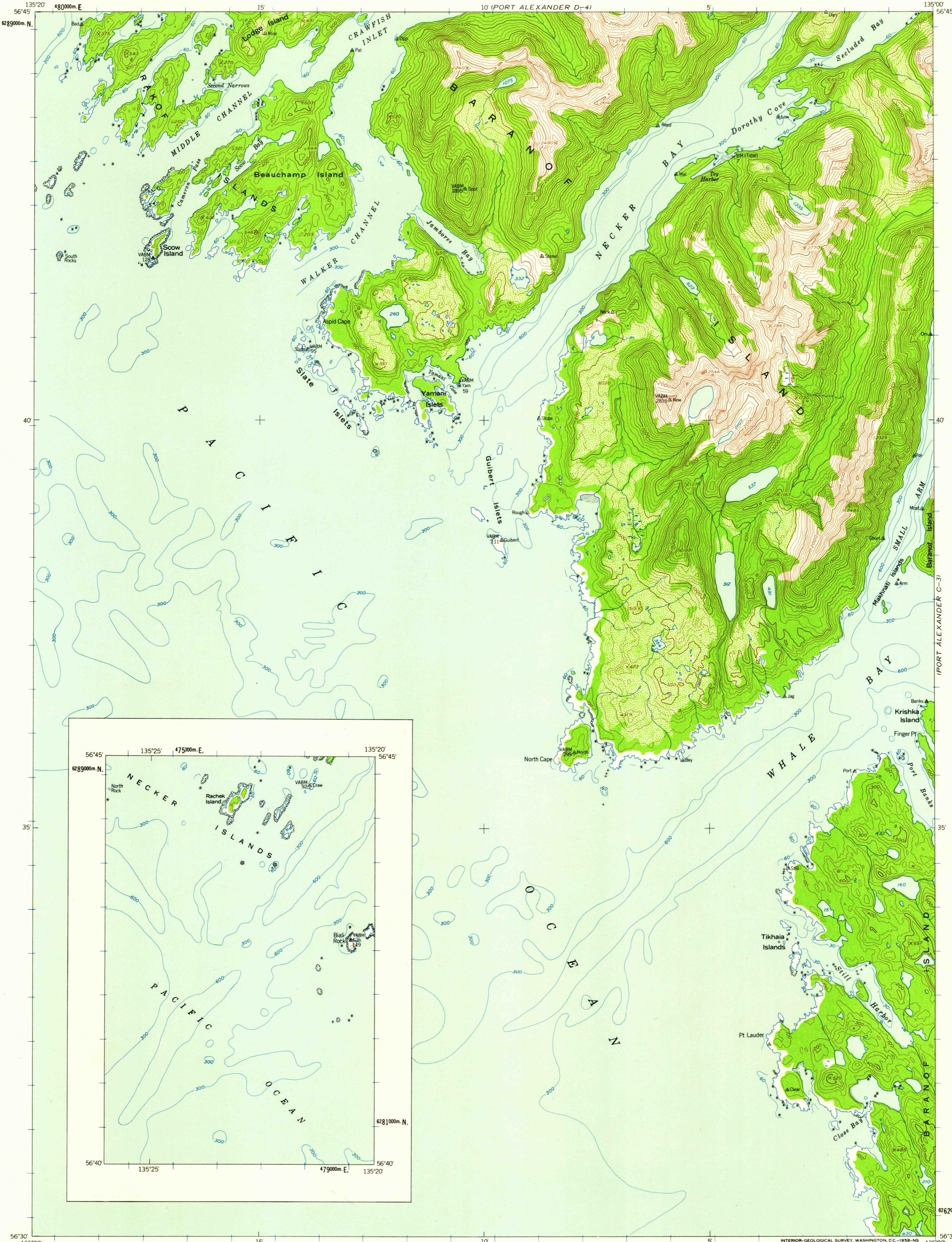


(PORT ALEXANDER D-5)

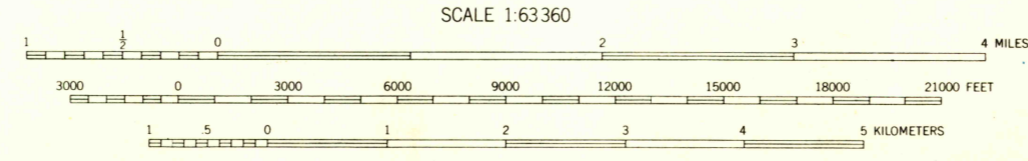
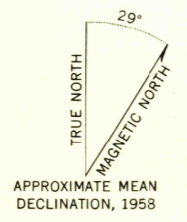
(PORT ALEXANDER D-3)

UNITED STATES
DEPARTMENT OF THE INTERIOR
GEOLOGICAL SURVEY

PORT ALEXANDER (C-4) QUADRANGLE
ALASKA—FIRST JUDICIAL DIVISION
1:63 360 SERIES (TOPOGRAPHIC)



Mapped, edited, and published by the Geological Survey
Control by USGS and USC&GS
Topography from aerial photographs by photogrammetric methods 1956. Aerial photographs taken 1948, field annotated 1951. Map not field checked.
Hydrography compiled from USC&GS charts 8254 and 8255, (1952) and hydrographic survey sheets 4430 and 4432 (1924)
Universal Transverse Mercator projection
1927 North American datum
1000-meter Universal Transverse Mercator grid ticks, zone 8, shown in blue
Entire land area is within the Tongass National Forest
Unchecked elevations are shown in brown and blue



CONTOUR INTERVAL 100 FEET
DATUM IS MEAN SEA LEVEL
DEPTH CURVES IN FEET—DATUM IS MEAN LOWER LOW WATER
SHORELINE SHOWN REPRESENTS THE APPROXIMATE LINE OF MEAN HIGH WATER
THE MEAN RANGE OF TIDE IS APPROXIMATELY 8 FEET



FOR SALE BY U.S. GEOLOGICAL SURVEY
FAIRBANKS, ALASKA DENVER 2, COLORADO WASHINGTON 25, D.C.
A FOLDER DESCRIBING TOPOGRAPHIC MAPS AND SYMBOLS IS AVAILABLE ON REQUEST

ROAD CLASSIFICATION
No roads or trails in this area

U.S.G.S.
FILE COPY
TOPOGRAPHIC DIVISION

USGS
Historical File
Topographic Division

DEC 28

1900