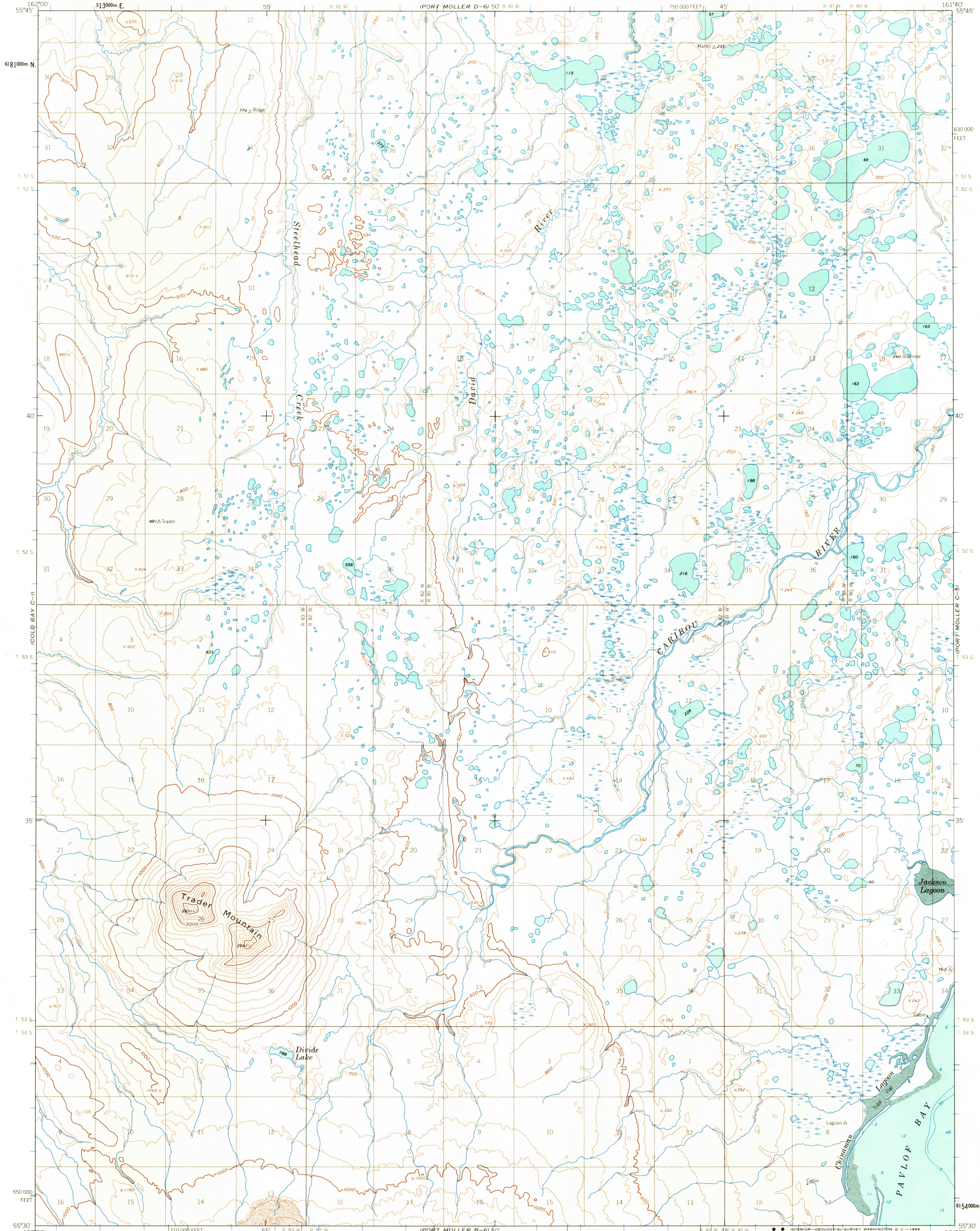


UNITED STATES  
DEPARTMENT OF THE INTERIOR  
GEOLOGICAL SURVEY

PORT MOLLER (C-6) QUADRANGLE  
ALASKA  
1:63 360 SERIES (TOPOGRAPHIC)



Mapped, edited, and published by the Geological Survey

Control by USGS and USC&GS

Topography by photogrammetric methods from aerial photographs taken 1962; field annotated 1963. Map not field checked

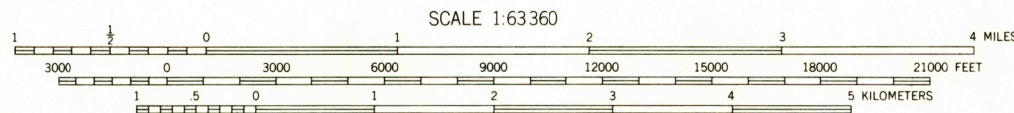
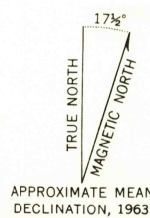
Selected hydrographic data compiled from USC&GS Chart 8704 (1964). This information is not intended for navigational purposes

Universal Transverse Mercator projection, 1927 North American datum, 10,000-foot grid based on Alaska coordinate system, zone 7, 1000-meter Universal Transverse Mercator grid ticks, zone 4, shown in blue

Land lines represent unsurveyed and unmarked locations predetermined by the Bureau of Land Management Folios S-29 and S-30, Seward Meridian

Lake elevations are unchecked

Swamps, as portrayed, indicate only the wetter areas, of low relief, as interpreted from aerial photographs



CONTOUR INTERVAL 100 FEET  
DOTTED LINES REPRESENT 50-FOOT CONTOURS  
DATUM IS MEAN SEA LEVEL  
DEPTH CURVES AND SOUNDINGS IN FEET DATUM IS MEAN LOWER LOW WATER  
SHORELINE SHOWN REPRESENTS THE APPROXIMATE LINE OF MEAN HIGH WATER  
THE MEAN RANGE OF TIDE IS APPROXIMATELY 5 FEET

FOR SALE BY U. S. GEOLOGICAL SURVEY  
FAIRBANKS, ALASKA 99701, DENVER, COLORADO 80225, OR WASHINGTON, D. C. 20242  
A FOLDER DESCRIBING TOPOGRAPHIC MAPS AND SYMBOLS IS AVAILABLE ON REQUEST

USGS  
Historical File  
Topographic Division

ROAD CLASSIFICATION  
No roads or trails in this area



PORT MOLLER (C-6), ALASKA  
N5530-W16140/15X20

1963

TOPOGRAPHIC DIVISION

U.S.G.S.

2205