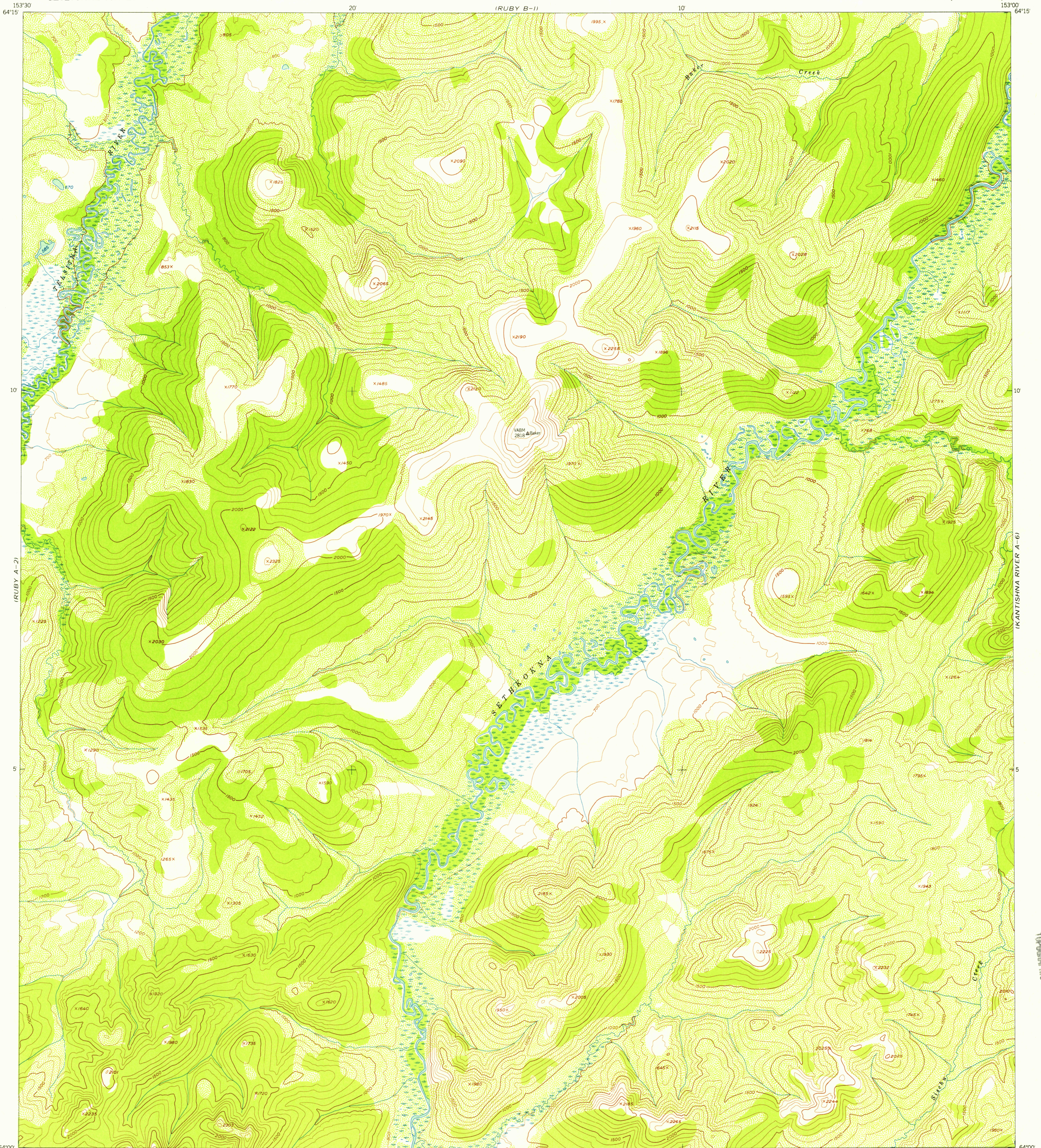


(RUBY B-2)

UNITED STATES
DEPARTMENT OF THE INTERIOR
GEOLOGICAL SURVEY

RUBY (A-1) QUADRANGLE
ALASKA—FOURTH JUDICIAL DIVISION
1:63 360 SERIES (TOPOGRAPHIC)

(KANTISHNA RIVER B-6)

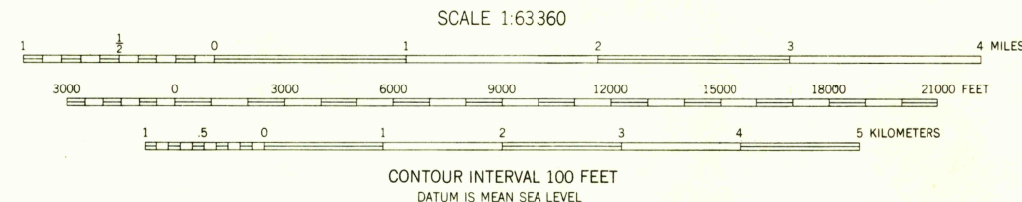
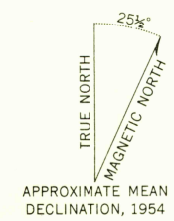


(RUBY A-2)

(KANTISHNA RIVER A-6)

Mapped, edited, and published by the Geological Survey
Control by USGS
Topography from aerial photographs by multiplex methods 1954
Aerial photographs taken 1952. Map not field checked
Universal Transverse Mercator projection, zone 5
1927 North American datum
Unchecked elevations are shown in brown and blue

(MEDFA D-2)



USGS
Historical File
Topographic Division



ROAD CLASSIFICATION
No roads or trails in this area

FOR SALE BY U.S. GEOLOGICAL SURVEY
FAIRBANKS, ALASKA DENVER 2, COLORADO WASHINGTON 25, D.C.
A FOLDER DESCRIBING TOPOGRAPHIC MAPS AND SYMBOLS IS AVAILABLE ON REQUEST

USGS
FILE COPY
TOPOGRAPHIC DIVISION

RUBY (A-1), ALASKA
N6400-W15300/15X30
1952

AUG 14 1957
2160

USGS
FILE COPY
TOPOGRAPHIC DIVISION

(MT. MCKINLEY D-5)