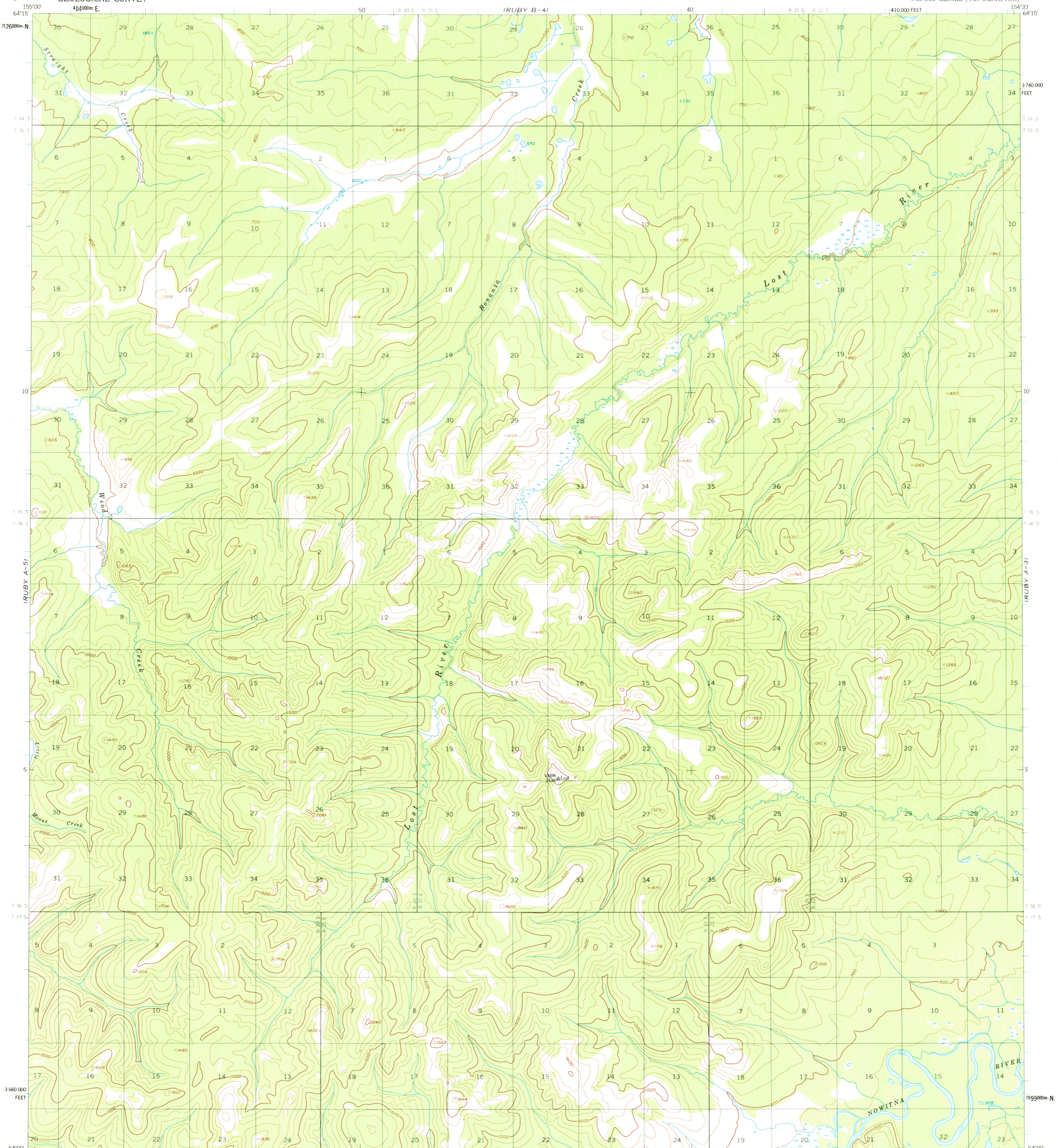


(RUBY B-5)

(RUBY B-3)

UNITED STATES  
DEPARTMENT OF THE INTERIOR  
GEOLOGICAL SURVEY

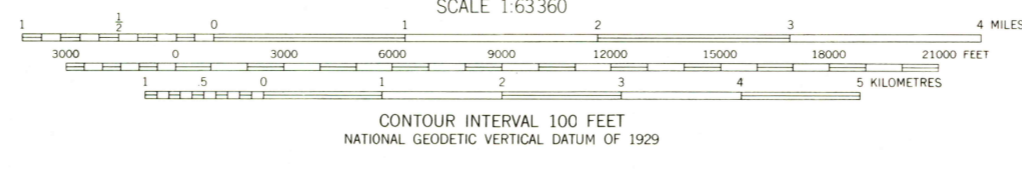
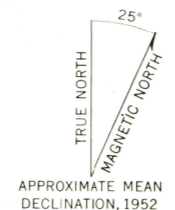
RUBY (A-4) QUADRANGLE  
ALASKA  
1:63 360 SERIES (TOPOGRAPHIC)



(MEDRA D-5)

(MEDRA D-3)

Mapped, edited, and published by the Geological Survey  
Control by NOS/NOAA and USCE  
Topography by photogrammetric methods from aerial photographs taken 1952. Map not field checked  
Universal Transverse Mercator projection, 1927 North American datum 10000-foot grid based on Alaska coordinate system, zone 5 1000-metre Universal Transverse Mercator grid ticks, zone 5, shown in blue  
Land lines represent unsurveyed and unmarked locations predetermined by the Bureau of Land Management Folios K-10 and K-19, Katerel River Meridian  
Swamps, as portrayed, indicate only the wetter areas, usually of low relief, as interpreted from aerial photographs



ROAD CLASSIFICATION  
No roads or trails in this area

FOR SALE BY U. S. GEOLOGICAL SURVEY  
FAIRBANKS, ALASKA 99701, DENVER, COLORADO 80225, OR RESTON, VIRGINIA 22092  
A FOLDER DESCRIBING TOPOGRAPHIC MAPS AND SYMBOLS IS AVAILABLE ON REQUEST

RUBY (A-4), ALASKA  
N6430-W15430/15X30  
1952  
MINOR REVISIONS 1973

JUN 0 2 1975

USGS  
HISTORICAL FILE  
TOPOGRAPHIC DIVISION

2710